



## PCS83 (Windows Version 4.10 onwards)

### Background:

The original PCS83 software was written to run under the Microsoft 'DOS' disk operating system on personal computers (pc) with an RS232 serial communication link to the target MTL800 Series equipment. The installation and use of this software package for the configuration of the MTL838B-MBF is described in the instruction manual, INM838B-MBF, available from the MTL web site.

To configure and interact with an MTL830 system using a pc running Microsoft Windows software then version 4.10, or later, of PCS83 is required. This is now available for download from the MTL website and enables a USB/serial communication adapter to be employed for connection to the MTL838B-MBF.

The display and interaction with PCS83 remains as a very basic configuration tool and does not use the modern Windows look-and-feel but rather is still essentially a DOS package.

Note: this version 4.10 of the PCS83 software has been tested for use with Microsoft Windows XP, Windows 7, and Windows 8.1 32bit and 64bit operating systems.

- It is recommended that the hardware and software for the USB/RS232 serial converter is first installed and tested on the target pc before loading and running PCS83. This ensures that any issues arising from the installation of the software driver for the adapter are not confused with any aspects of operating PCS83 for the first time.

### Procedure:

The procedure to load and operate PCS83 v4.10 is very simple since there is not a complex 'installation' process required.

- 1) The package is provided as a 'zip' file and this should be stored and unpacked or 'unzipped' to the target directory location on the pc hard disk drive. This step should be completed whether the software was provided on CD or downloaded from the web site.
- 2) Browse on the pc to the target directory and locate then activate the PCS83-Win.exe file.
- 3) The screen that appears should be that of Figure1, and on first execution it is best to select "No" to the request to upload data. Note that the interaction with the software package to select and operate the activities is through the 'arrow' and 'enter' keys of the pc keyboard. The software does not interact with a computer mouse or other pointer systems.

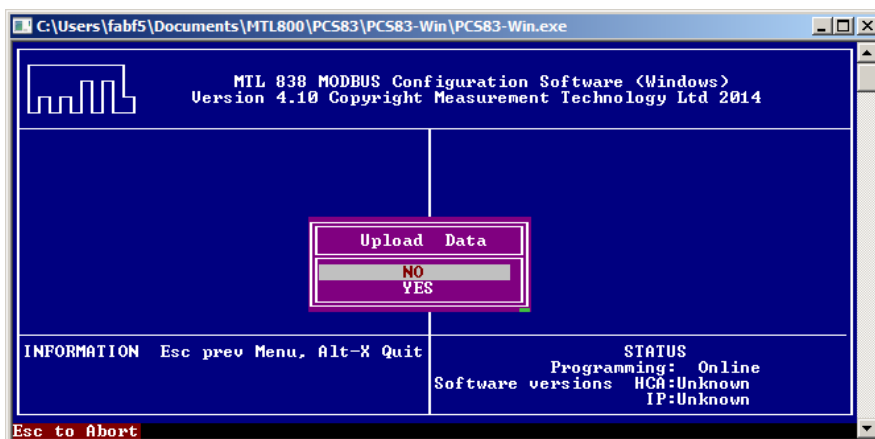


Fig.1 Initial PCS83 v4.10 screen

- 4) To select the serial port for communication via the relevant USB adapter navigate to the 'Serial Port' parameter and hit 'Enter'. The selection box that appears, see Figure 2, will show the valid COM ports for the pc and will vary according to the specific pc setup. Make the selection for the required COM port and hit 'Enter'.

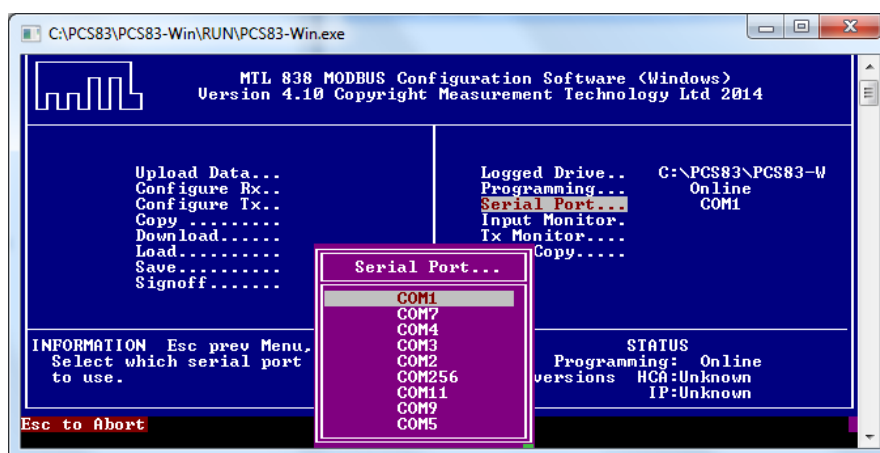


Fig.2 selecting COM port for communication with USB converter

- 5) The settings and options for the various configuration parameters that are accessed using PCS83 are described in the instruction manual referenced earlier, INM838B-MBF.

15/09/2014