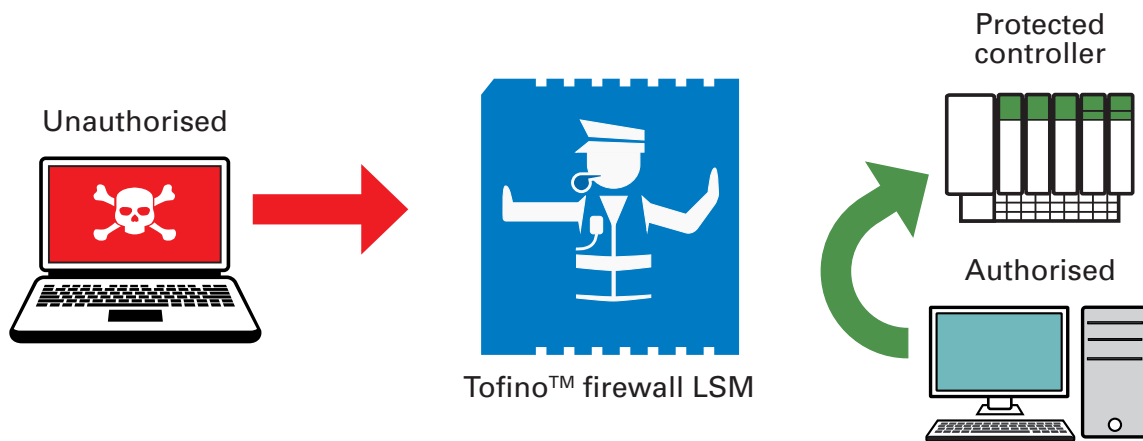


# MTL Tofino™ firewall LSM

## Directs and controls industrial network traffic



### Take control of your network traffic

The vast majority of control networks have little or no isolation between different subsystems. If a device misconfiguration, hardware failure, or virus causes a problem in one part of the network, it can spread throughout the entire network in seconds and bring your whole plant down. Even redundant backup systems can fail simultaneously if their network connections are not protected.

The MTL Tofino Firewall LSM is like a traffic control cop for industrial networks, checking all communications on your control network against a list of traffic 'rules' defined by your control engineers. Any communication that is not on the 'allowed' list will be blocked and reported by the MTL Tofino Firewall. Traffic rules are created using terms and concepts that are already familiar to control specialists. And, the unique 'test' mode of MTL Tofino lets you test your rules without any risk to plant operation.

### Saves you money through:

- Simplifying compliance to safety and security standards.
- Reduced down time and production losses.
- Improved system reliability and stability.

### Unique capabilities:

- Traffic rules are defined by your control team, specifying which devices may communicate using what protocols.
- Rule definition is simple using a graphical drag-and-drop editor.
- Traffic that does not match the rules is automatically blocked and reported.
- Over 125 pre-defined IT and industrial communication protocols.
- Over 180 pre-defined security templates for common controllers, drives, HMIs and network products.
- Pre-defined 'special rules' for advanced traffic filtering and vulnerability protection.

### Applications

- Isolate critical devices from threat sources.
- Separate control networks into security 'zones', restricting communications between zones.
- Protect controllers with known vulnerabilities.

**FEATURES & SPECIFICATIONS**

<b>Protects multiple devices</b>	Master and slave devices are supported, with unique direction and permission settings for each client/server connection.
<b>Filter policy</b>	Deny by default: any network traffic that is not on the 'allowed' list is automatically blocked and reported.
<b>State tracking</b>	Stateful Packet Inspection (SPI).
<b>User-settable options</b>	<p>IP-based protocols:</p> <ul style="list-style-type: none"> <li>• Source device: specific IP address, network, or 'any'.</li> <li>• Destination device: specific IP address, network, broadcast, multicast, or 'any'.</li> <li>• Application protocol: any combination of single, list, and/or range of port numbers.</li> <li>• Direction: incoming, outgoing, bidirectional.</li> </ul> <p>Both IP-based and non-IP protocols:</p> <ul style="list-style-type: none"> <li>• Permission: Allow, Deny, Enforce (requires appropriate Enforcer LSM).</li> <li>• Logging: Enabled, Disabled.</li> <li>• Rate limit controls.</li> </ul>
<b>Transport protocols</b>	TCP, UDP and non-IP protocols supported.
<b>Configuration method</b>	Simple configuration using the MTL Tofino Configurator (TC).
<b>Operating modes</b>	All standard MTL Tofino modes supported: <ul style="list-style-type: none"> <li>• Passive: all traffic allowed, no alerting.</li> <li>• Test: all traffic allowed; alerts generated as per user rules.</li> <li>• Operational: traffic filtered and alerts generated as per user rules.</li> </ul>
<b>Security alerts</b>	Reports blocked traffic to a syslog server and non-volatile memory on a MTL Tofino Security Appliance.
<b>Certifications</b>	<ul style="list-style-type: none"> <li>• Certified Modbus compliant by Modbus-IDA.</li> </ul>
<b>System requirements</b>	<ul style="list-style-type: none"> <li>• MTL Tofino Security Appliance.</li> <li>• MTL Tofino Configurator (TC).</li> </ul>
<b>Ordering information</b>	Part number: <b>9522-FW</b> Name: <b>MTL Tofino™ Firewall LSM</b> Visit: <b>www.mtl-inst.com/tofino for ordering information for all products.</b>

The **MTL Tofino™ Firewall LSM** is a component of the **MTL Tofino™ Industrial Security Solution**

**MTL Tofino Security Appliance**

Hardware platform that creates Plug-n-Protect™ zones of security on control and SCADA networks.



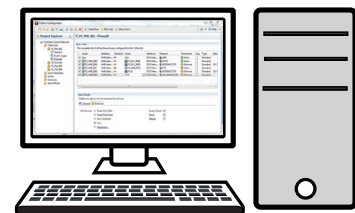
**Loadable Security Modules**

Firmware modules that customize the security features of each MTL Tofino SA:

- **Firewall:** Directs and controls industrial network traffic.
- **Modbus, OPC, and EtherNet/IP Enforcers:** Ensure compliance, manage connections, and restrict ICS SCADA commands.
- **NetConnect:** Provides secure remote configuration over any IP-based network.
- **Event Logger:** Reliably logs security events and alarms.

**MTL Tofino Configurator**

Software that provides coordinated security management of all MTL Tofino Security Appliances from one workstation or server.



**Eaton Electric Limited,**  
 Great Marlings, Butterfield, Luton  
 Beds, LU2 8DL, UK.  
 Tel: + 44 (0)1582 723633 Fax: + 44 (0)1582 422283  
 E-mail: [mtlenquiry@eaton.com](mailto:mtlenquiry@eaton.com)  
[www.mtl-inst.com](http://www.mtl-inst.com)

© 2016 Eaton  
 All Rights Reserved  
 Publication No. EPS FW-LSM rev8 010916  
 September 2016

**EUROPE (EMEA):**  
 +44 (0)1582 723633  
[mtlenquiry@eaton.com](mailto:mtlenquiry@eaton.com)

**THE AMERICAS:**  
 +1 800 835 7075  
[mtl-us-info@eaton.com](mailto:mtl-us-info@eaton.com)

**ASIA-PACIFIC:**  
 +65 6 645 9888  
[sales.mtlsing@eaton.com](mailto:sales.mtlsing@eaton.com)

The given data is only intended as a product description and should not be regarded as a legal warranty of properties or guarantee. In the interest of further technical developments, we reserve the right to make design changes.