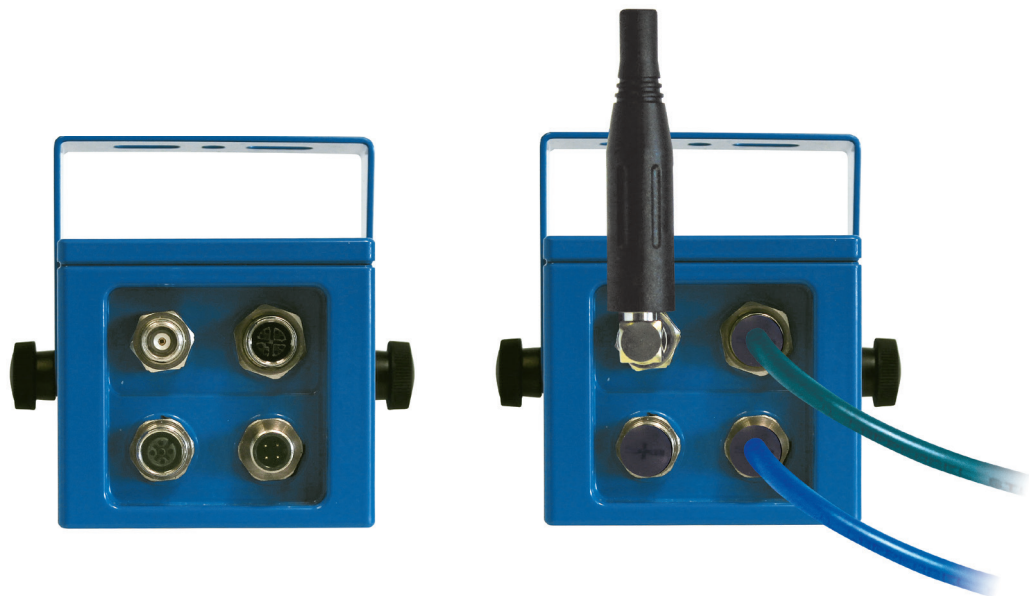


MTL RUGICAM-IP

Quick start guide



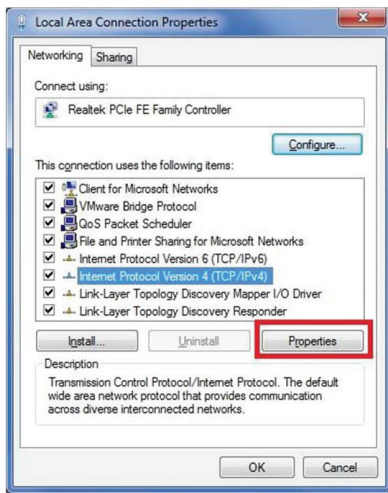
RUGICAM-IP camera unit



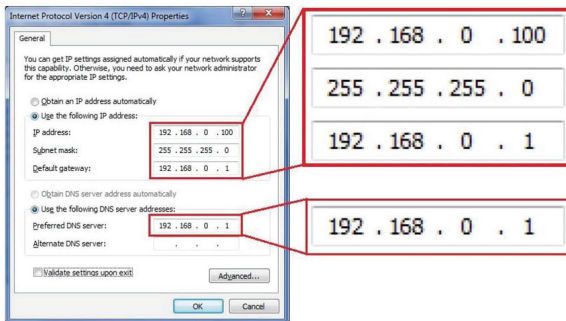
RUGICAM-IP module cable interface

INSTALLATION

1. Connect the RugiCAM-IP directly to a PC with the Ethernet cable. (Note: some older computers need a crossover cable if the NIC doesn't have automatic cable switching) and power on the camera with the 12VDC power supply provided.
2. On Windows 7, go to Control Panel\Network and Sharing Center; Click "Local Area Connection" and then click "Properties". On Windows XP, go to Control Panel\Network and Internet\Network Connections. Right click on the corresponding Network adapter and then click "Properties".



3. In Local Area Connection Properties, Click Internet Protocol Version 4 (TCP/ IPv4) Properties.



4. Specify IP address and DNS server as in the screenshot below.
5. If necessary, wait for around 45 seconds for the IP Camera to boot up.
6. Open Internet Explorer, browse for the IP address of the IP Camera (<http://192.168.0.168/>).

7. You should see a login Window where you can enter the username and password.
 - User Name: admin
 - Password: admin
8. If you run this camera at the first time, you may not be able to see the live video before you install the ActiveX control. Please adjust Internet Explorer ActiveX settings as below.
 - Click the Tools menu of Internet Explorer., and then click Internet Options.
 - Go to Security
 - Trusted sites.
 - Click "Sites" and add the IP address (192.168.0.168) to trusted sites. Note: If you change the static IP or enable DHCP, the new IP address needs to be added to trusted sites as well.
 - Or you can add all IP addresses on subnet (192.168.0.*) to trusted sites.
 - Then click the Custom level button.
 - Scroll down the Security Settings list until you see ActiveX controls and plug-ins.
 - Scroll down to Download unsigned ActiveX controls and click Enable.
 - Scroll down to Initialize script ActiveX controls not marked safe for scripting and click Enable.
 - Click OK, and then click OK again.
9. After altering the ActiveX settings, reload the webpage, login, install the ActiveX. You will now see the live streaming of the IP Camera.

Note:

1. The default IP address is static IP 192.168.0.168. You can change the static IP address or change the network setting to DHCP using the Web Interface. After the camera reboots, you can get the new IP address from UPnP devices (File Explorer > Network > Other Devices > right click UPnP device > Properties).
2. Under the same router, please make sure different cameras have different IP addresses.
3. Press the reset button on the back for 5 seconds, the camera can be reset to factory default setting.
4. Video can also be viewed over rtsp using numerous media players that support it. i.e. VLC MPCRTSP URL:

rtsp://192.168.0.168:554/0 or rtsp://192.168.0.168:554/1