

MTL Tofino™ OPC enforcer LSM

Tracks and secures OPC connections



Advanced cyber security for OPC/DCOM Communications.

OLE for Process Control (OPC) is widely used in SCADA and control systems as an interoperability solution, interfacing control applications from multiple vendors. But the DCOM technologies underlying OPC were designed before network security issues were widely understood. As a result, OPC is almost impossible to secure using a conventional firewall.

The MTL Tofino OPC Enforcer Loadable Security Module (LSM) inspects, tracks and secures every connection that is created by an OPC application. It dynamically opens only the TCP ports that are required for each connection, and only between the specific OPC client and server that created the connection.

It's simple to use – no configuration changes are required on the OPC clients and servers – and offers superior security over what can be achieved with conventional firewall or tunneler solutions.

Your OPC clients and servers are vital to the operation of your plant. Protect them now with the MTL Tofino Security Appliance and MTL Tofino OPC Enforcer LSM.

Saves you money through:

- Simplifying compliance to safety and security standards.
- Reduced down time and production losses.
- Lower maintenance costs.
- Improved system reliability and stability.

Unique capabilities:

- First-ever application of content inspection technology to industrial protocols.
- Control specialist defines list of allowed Modbus commands, registers and coils.
- Automatically blocks and reports any traffic that does not match the rules.
- Protocol 'Sanity Check' blocks any traffic not conforming to the Modbus standard.
- Supports multiple master and slave devices.
- Simple configuration and monitoring using the MTL Tofino Configurator GUI.
- Certified Modbus compliant by Modbus-IDA.

Applications

- Oil & gas custody transfer.
- Safety instrumentation systems.
- Managing PLC programming stations.
- Display-only HMI panels.
- Partner access to telemetry data.

FEATURES & SPECIFICATIONS

Supports all variations of DCOM-based OPC	Data Access (DA), Historical Data Access (HDA), Alarms and Events (A&E), Data eXchange (DX), and XML Data Access (XML-DA).
Supports multiple connections	Multiple OPC clients and servers can be protected by a single MTL Tofino Security Appliance running the OPC Enforcer LSM.
Default filter policy	Deny by default including: <ul style="list-style-type: none"> • Any attempted OPC traffic that is not between defined OPC client and server pairs will be blocked and reported. • Any attempted TCP connection that was not successfully negotiated between a valid OCP client and server will be blocked and reported.
User-settable options	The following options may be set: <ul style="list-style-type: none"> • Sanity check enable/disable. • Packet fragmentation controls. • Maximum time to wait for data connection to start.
Configuration method	Simple configuration using the MTL Tofino Configurator (TC).
Operating modes	All standard MTL Tofino modes supported: <ul style="list-style-type: none"> • Test: all traffic allowed; alerts generated as per user rules. • Operational: traffic filtered and alerts generated as per user rules.
Security alerts	Reports security alerts to a syslog server and to non-volatile memory on a MTL Tofino Security Appliance.
Certifications	Certified Modbus compliant by Modbus-IDA.
System requirements	<ul style="list-style-type: none"> • MTL Tofino Security Appliance. • MTL Tofino Firewall LSM. • MTL Tofino Configurator (TC).
Ordering information	Part number: 9522-OPC Name: MTL Tofino™ OPC Enforcer LSM Visit: www.mtl-inst.com/tofino for ordering info for all products.

The **MTL Tofino™ Firewall LSM** is a component of the **MTL Tofino™ Industrial Security Solution**

Tofino Security Appliance

Hardware platform that creates Plug-n-Protect™ zones of security on control and SCADA networks.



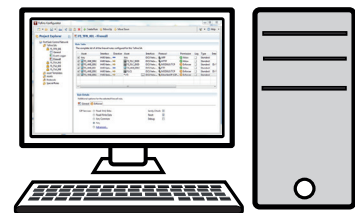
Loadable Security Modules

Firmware modules that customize the security features of each MTL Tofino SA:

- **Firewall:** Directs and controls industrial network traffic.
- **Modbus, OPC, and EtherNet/IP Enforcers:** Ensure compliance, manage connections, and restrict ICS SCADA commands.
- **NetConnect:** Provides secure remote configuration over any IP-based network.
- **Event Logger:** Reliably logs security events and alarms.

MTL Tofino Configurator

Software that provides coordinated security management of all MTL Tofino Security Appliances from one workstation or server.



Eaton Electric Limited,
Great Marlings, Butterfield, Luton
Beds, LU2 8DL, UK.
Tel: + 44 (0)1582 723633 Fax: + 44 (0)1582 422283
E-mail: mtlenquiry@eaton.com
www.mtl-inst.com

© 2016 Eaton
All Rights Reserved
Publication No. EPS OPC-LSM rev 3 010916
September 2016

EUROPE (EMEA):
+44 (0)1582 723633
mtlenquiry@eaton.com

THE AMERICAS:
+1 800 835 7075
mtl-us-info@eaton.com

ASIA-PACIFIC:
+65 6 645 9888
sales.mtlsing@eaton.com

The given data is only intended as a product description and should not be regarded as a legal warranty of properties or guarantee. In the interest of further technical developments, we reserve the right to make design changes.