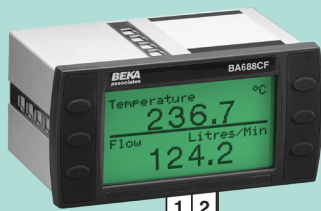
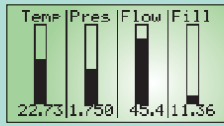


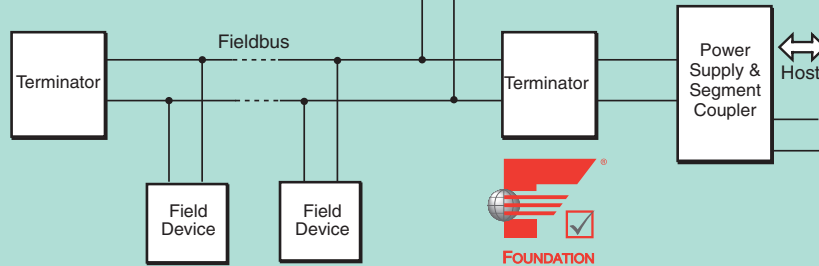
**ITK 6.3
Compliant**

Standard display formats:
1, 2, 3, 4 or 8 variables
some with bargraphs.



Temperature °C
236.7
Flow Litres/Min
124.2

In-1	Tag	10.000	Units
In-2	Tag	20.000	Units
In-3	Tag	30.000	Units
In-4	Tag	40.000	Units
In-5	Tag	50.000	Units
In-6	Tag	60.000	Units
In-7	Tag	70.000	Units
In-8	Tag	80.000	Units



The BA688CF-F Fieldbus Display is a general purpose instrument that can display up to eight fieldbus process variables. Eleven selectable standard screen formats contain one, two, three, four or eight variables, with units of measurement, tag descriptions and bargraphs on some screens.

Selectable function blocks allow the BA688CF-F fieldbus display to be used with all common system hosts. Configuration files may be downloaded from the Foundation fieldbus or the BEKA websites

Powered by the fieldbus the BA688CF-F only requires a 2-wire connection, no additional power supply is required. The high contrast 86 x 45mm liquid crystal display incorporates a green backlight that is also powered from the fieldbus enabling the display to be read in all lighting conditions from full sunlight to total darkness.

Simple commissioning results from the use of standard display formats. Apart from loading the BA688CF-F configuration files onto the system host and selecting the fieldbus variables to be displayed, no programming is required. Configuration of the BA688CF-F Fieldbus Display is performed via the fieldbus and the

instrument front panel push buttons; simple menus enable the required standard display format to be selected and the units of measurement and tag information for each variable to be entered.

Six optional local alarm outputs may be linked to any of the displayed variables. Each isolated single pole solid state output may be conditioned as a combined high and low alarm, or as just a high or low alarm. Each output can switch any low power load such as a sounder, lamp or solenoid valve. Alarm configuration and the alarm set point adjustment is performed via the BA688CF-F front panel push buttons, as the local alarms are not accessible from the fieldbus system host.

Comprehensive documentation includes FOUNDATION™ fieldbus Interface Guide.

For field mounting applications see the BA684DF-F datasheet. This instrument has a similar electrical specification but is housed in a robust IP66 GRP enclosure suitable for external mounting.

If flammable atmospheres are present, the intrinsically safe BA488CF-F fieldbus display should be used.

BA688CF-F FOUNDATION™ fieldbus Fieldbus display 8 variables

General purpose

- ◆ FOUNDATION™ fieldbus protocol, ITK 6.3 compliant.
- ◆ Compatible with most system hosts.
- ◆ High contrast display with backlight.
- ◆ Six optional local alarm outputs.
- ◆ IP66 front panel
- ◆ 3 year guarantee

www.beka.co.uk/ba688cf-f

BEKA associates

BEKA associates Ltd. Old Charlton Rd.
Hitchin, Hertfordshire, SG5 2DA, U.K.
Tel. (01462) 438301 Fax (01462) 453971
e-mail sales@beka.co.uk www.beka.co.uk

SPECIFICATION

Display

Type	120 x 64 pixel liquid crystal
Size	86.5mm x 45mm
Backlight	Powered from fieldbus
Screens	
Standard format	1, 2, 3, 4 or eight variables plus bargraph can include: units of measurement tag information

Controls

Front panel	Six push buttons scroll the indicator display between screens when the BA688CF-F is configured to display more variables than fit onto a single screen. Also used to configure optional local alarms.
-------------	---

Fieldbus communication

Voltage	9 to 32V
Current	25mA
Compliant with Protocol	IEC61158-2 Clauses 11 and 22 FOUNDATION™ fieldbus, ITK 6.3 compliant
Function blocks	
FOUNDATION fieldbus™	1 x MAO (Multiple Analogue Output) or 2 x IS (Input Selector)
	Selectable on-site

Environmental

Operating temp	-20 to 60°C
Storage temp	-40 to 85°C
Humidity	To 95% @ 40°C
Enclosure	Front IP66, rear IP20
EMC	Complies with EMC Directive 2014/30/EU.

Mechanical

Terminals	Removable with screw clamp for 0.5 to 1.5mm ² cable.
Weight	0.7kg

Accessories

Alarms	Six galvanically isolated outputs which may be linked to displayed variables. Each alarm is configurable from instrument push buttons as: combined high and low alarm high or low alarm Note: Alarms are not accessible from the fieldbus system host
--------	--

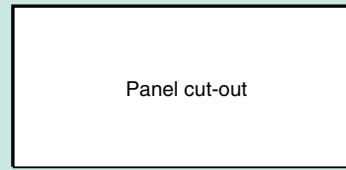
Contacts Isolated single pole solid state switch.

Ron	less than 5Ω + 0.7V
Roff	greater than 1MΩ
Vmax	= 30V dc
I _{max}	= 200mA

Tag number Thermally printed strip on rear of instrument.

FOUNDATION™ fieldbus interface guide. May be downloaded from www.beka.co.uk

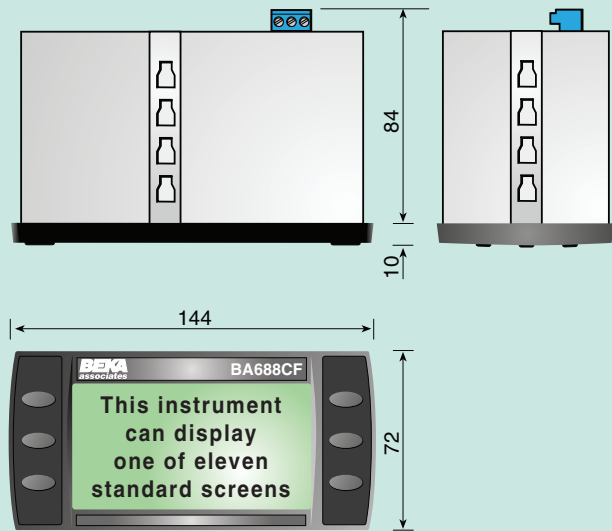
DIMENSIONS (mm)



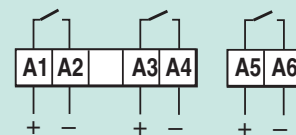
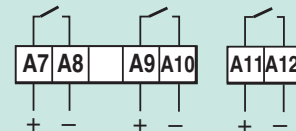
Recommended panel cut-out

To achieve an IP66 seal between the instrument and the panel
136.0 +0.5/-0.0 x 66.2 +0.5/-0.0
Four panel mounting clips must be used

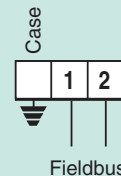
DIN 43 700
138.0 +1.0/-0.0 x 68.0 +0.7/-0.0



TERMINAL CONNECTIONS



Optional local alarm outputs



HOW TO ORDER

Model number	Please specify BA688CF-F
Accessories	Please specify if required
Six alarms	Alarms
Tag strip	Legend