

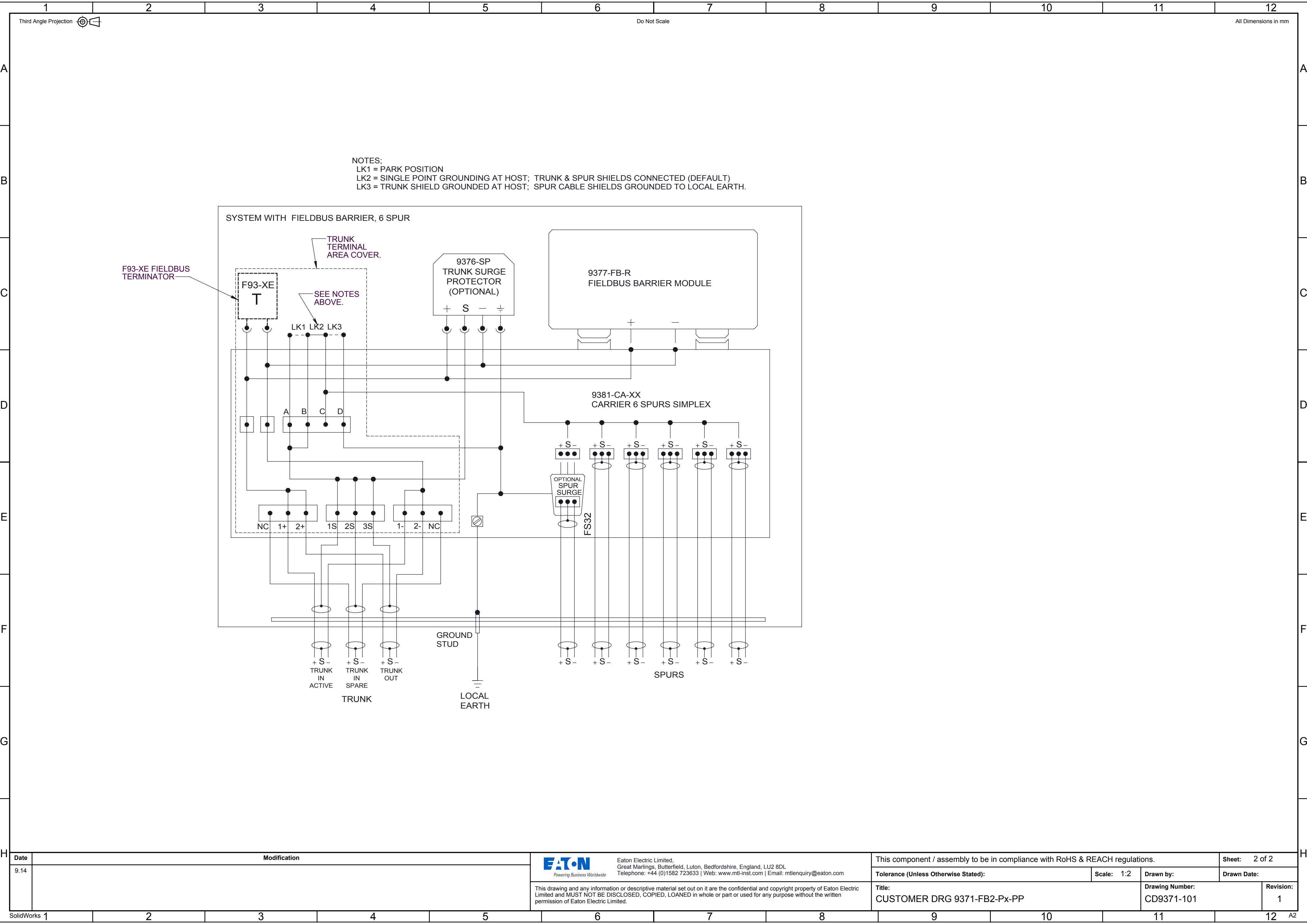
Date	Modification
9.14	

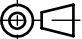
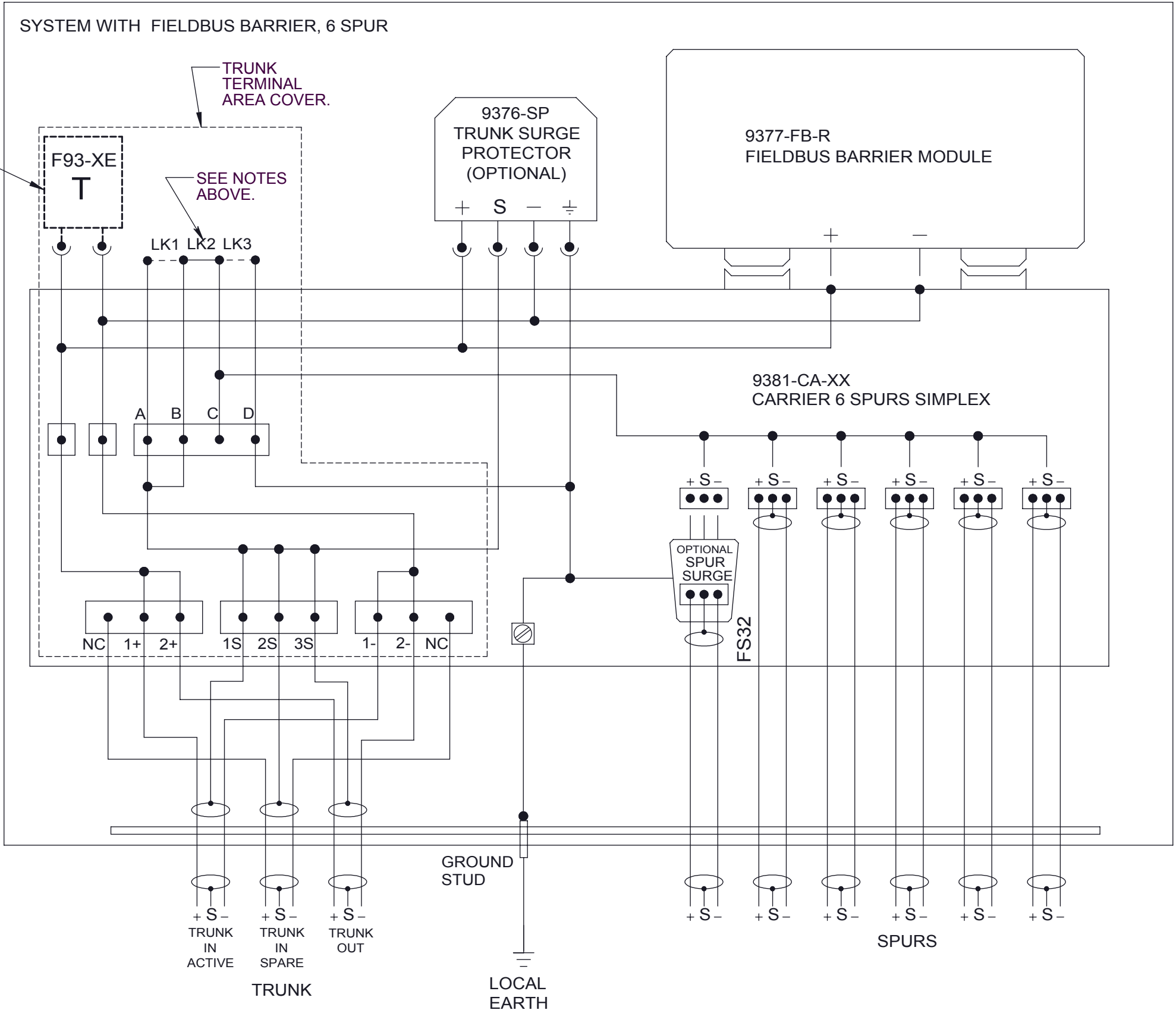

EAT-N
Powering Business Worldwide

Eaton Electric Limited,
Great Marlings, Butterfield, Luton, Bedfordshire, England, LU2 8DL
Telephone: +44 (0)1582 723633 | Web: www.mtl-inst.com | Email: mtlenquiry@eaton.com

This drawing and any information or descriptive material set out on it are the confidential and copyright property of Eaton Electric Limited and MUST NOT BE DISCLOSED, COPIED, LOANED in whole or part or used for any purpose without the written permission of Eaton Electric Limited.

This component / assembly to be in compliance with RoHS & REACH regulations.				Sheet: 1 of 2
Tolerance (Unless Otherwise Stated):		Scale: 1:2	Drawn by:	Drawn Date:
Title: CUSTOMER DRG 9371-FB2-Px-PP			Drawing Number: CD9371-101	Revision: 1



1	2	3	4	5	6	7	8	9	10	11	12						
Third Angle Projection  Do Not Scale All Dimensions in mm																	
A												A					
B												B					
C												C					
D												D					
E												E					
F												F					
G												G					
H												H					
<div>NOTES: LK1 = PARK POSITION LK2 = SINGLE POINT GROUNDING AT HOST; TRUNK & SPUR SHIELDS CONNECTED (DEFAULT) LK3 = TRUNK SHIELD GROUNDED AT HOST; SPUR CABLE SHIELDS GROUNDED TO LOCAL EARTH.</div>					<div>SYSTEM WITH FIELDBUS BARRIER, 6 SPUR</div> 												
<table><tr><th>Date</th><th>Modification</th></tr><tr><td>9.14</td><td></td></tr></table>					Date	Modification	9.14		<div><p>Eaton Electric Limited, Great Marlings, Butterfield, Luton, Bedfordshire, England, LU2 8DL Telephone: +44 (0)1582 723633 Web: www.mtl-inst.com Email: mtl-enquiry@eaton.com</p></div> <div>This drawing and any information or descriptive material set out on it are the confidential and copyright property of Eaton Electric Limited and MUST NOT BE DISCLOSED, COPIED, LOANED in whole or part or used for any purpose without the written permission of Eaton Electric Limited.</div>					This component / assembly to be in compliance with RoHS & REACH regulations.		Sheet: 2 of 2	
Date	Modification																
9.14																	
					Tolerance (Unless Otherwise Stated):		Scale: 1:2	Drawn by:	Drawn Date:								
					Title: CUSTOMER DRG 9371-FB2-Px-PP			Drawing Number: CD9371-101		Revision: 1							
SolidWorks 1	2	3	4	5	6	7	8	9	10	11	12 A2						