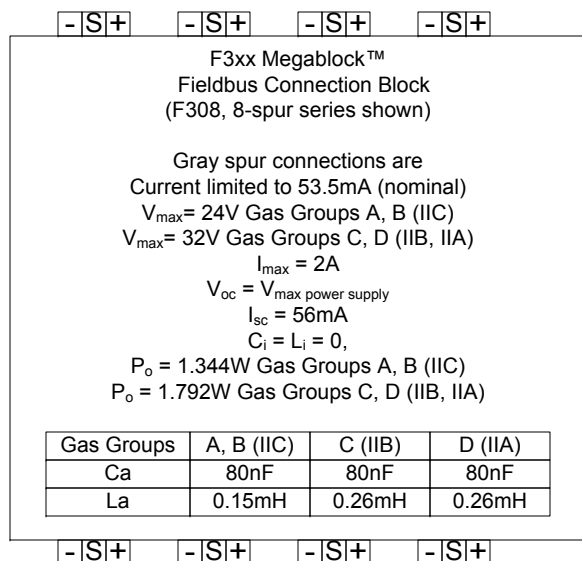


HAZARDOUS (CLASSIFIED) LOCATION

Class I Div 2 ABCD T4
Class I Zone 2 IIC T4 (US only)
Ex nA [nL] IIC T4 (Canada only)

$-50^{\circ}\text{C} \leq T_{\text{amb}} \leq 70^{\circ}\text{C}$
Field wiring shall be rated for 70C

Gray Spur (Fieldbus Device) Connections



Gray Spur (Fieldbus Device) Connections

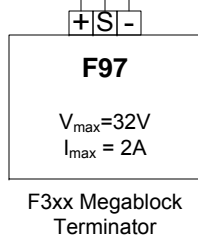
Gray Spur Outputs are energy limited (Non-incendive Field Wiring) and may be live worked without gas clearance where allowed by local code.

To support live working of the devices connected to the gray spurs, the following criteria must be met:

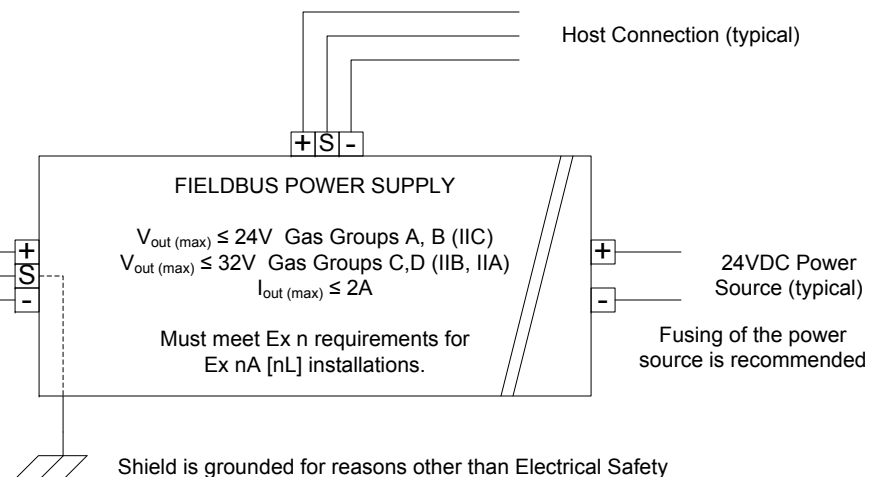
- Device must have entity parameters with a maximum input voltage greater than or equal to V_{oc} of the Megablock.
- $C_a \leq C_i + C_{\text{cable}}$
- $L_a \leq L_i + L_{\text{cable}}$

Installation must be in accordance with the National Electrical Code (NFPA 70, Article 504), ANSI/ISA-RP12.6, and CEC Part 1, or any other applicable local electrical requirements.

The plastic parts can store static charge. Clean only with a damp cloth to prevent static buildup.



NON-HAZARDOUS LOCATION



Galvanic isolation in accordance with IEC61010 provided by Power Source or Power Supply.

If the Fieldbus Power Supply is suitably rated, it may be installed in the Hazardous Area.

WARNING – EXPLOSION HAZARD. DO NOT DISCONNECT EQUIPMENT WHEN A FLAMMABLE OR COMBUSTIBLE ATMOSPHERE IS PRESENT (except gray spurs)

Megablock™ Part Numbers:

F3xx[-V2][-T][-PC][-PD]

xx – indicates the number of spurs (04, 08, 12, or 16)
-V2 – option for no over-voltage protection
-T – option for a built-in terminator
-PC – option for pluggable spring clamp connectors
-PD – option for pluggable insulation displacement connectors

Standard connectors are Pluggable Screw Terminal type.

The F97 is not used if the F3xx contains an internal Terminator (-T part number suffix).

Wire Requirements:

Connector Type	AWG	Torque
Screw Terminal	22-14	0.5-0.6Nm
Spring Clamp	24-12	NA
Insulation Displacement	20-18	NA



Relcom Inc.

INDUSTRIAL LAN | WIRING COMPONENTS AND TESTERS

2221 Yew Street, Forest Grove, Oregon 97116 USA

**FM CONTROL DRAWING FOR F3XX
MEGABLOCK™ SERIES FIELDBUS
CONNECTION BLOCKS
CID2, Zone 2 INSTALLATIONS**

Approved by: Cyrus Kelly

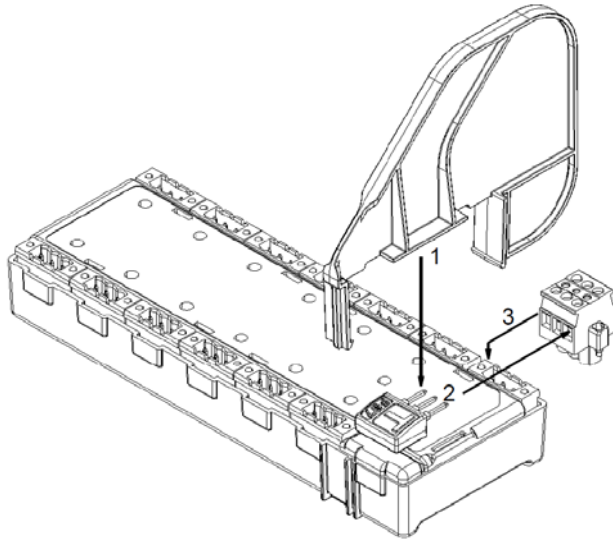
Date: 10 FEB 2017

Doc. No. 502-484

Rev. C.0

Sheet 1 of 2

Installing the Partition, Terminator, and Connector



Partition Installation

The Partition must be installed for Ex nA [ic] applications. Orient the partition as shown above and press down as indicated by the arrow. The 'fingers' will slide in the two channels on each side of the F3xx until they latch in place at the bottom of the case. The channels are sized differently so the Partition cannot be installed backwards.

Terminator Installation

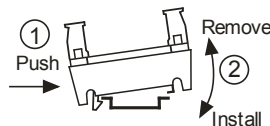
If needed the F97 Terminator is installed in the Black Dual Pluggable connector as shown above. Insert it into the connector and tighten the screws.

Connector Installation

The connectors are installed as shown in the diagram above. Fully insert them into the mating connector on the F3xx. Secure the two retaining screws to prevent the connector from unexpectedly dislodging.

DIN Rail Mounting

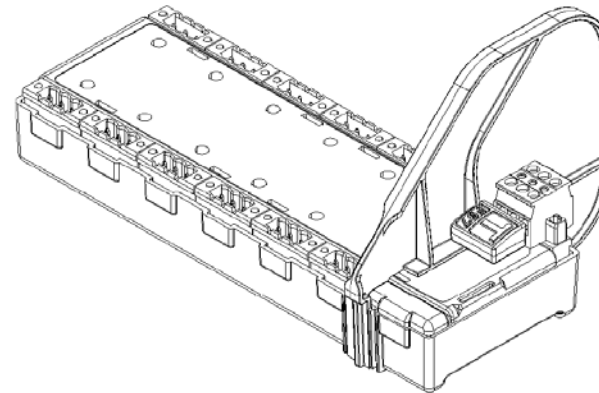
F3xx Megablocks are designed to be mounted on 35 mm DIN rail using the clip mechanism on the back of each unit. Mounting can be vertical or horizontal. Use of DIN rail end stops is recommended.



Repair and Maintenance

No regular maintenance is required for these products. There are also no user serviceable parts in this product. Contact the distributor or factory for any product issues.

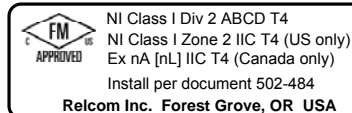
Partition, Terminator, and Connector Installed



Special Conditions of Safe Use

- The apparatus shall be installed in an enclosure which maintains an ingress protection rating of IP54 and meets the enclosure requirements of E60079-0 and E60079-15.
- The apparatus shall be installed in an enclosure meeting the requirements of ANSI/ISA 61010-1 (82.02.01) and CSA Standard C22.2 No 61010-1.
- The apparatus shall be installed in compliance with the enclosure, mounting, spacing and segregation requirements of the ultimate application.
- Provisions shall be made externally to the F3XX to prevent the rated input being exceeded by transient disturbances of more than 140% of the rated voltage.

Certification Markings



Relcom Inc.

INDUSTRIAL LAN | WIRING COMPONENTS AND TESTERS

2221 Yew Street, Forest Grove, Oregon 97116 USA

F3XX MEGABLOCK™ SERIES

INSTALLATION INSTRUCTIONS

Approved by: Cyrus Kelly

Date: 10 FEB 2017

Doc. No. 502-484

Rev. C.0

Sheet 2 of 2

