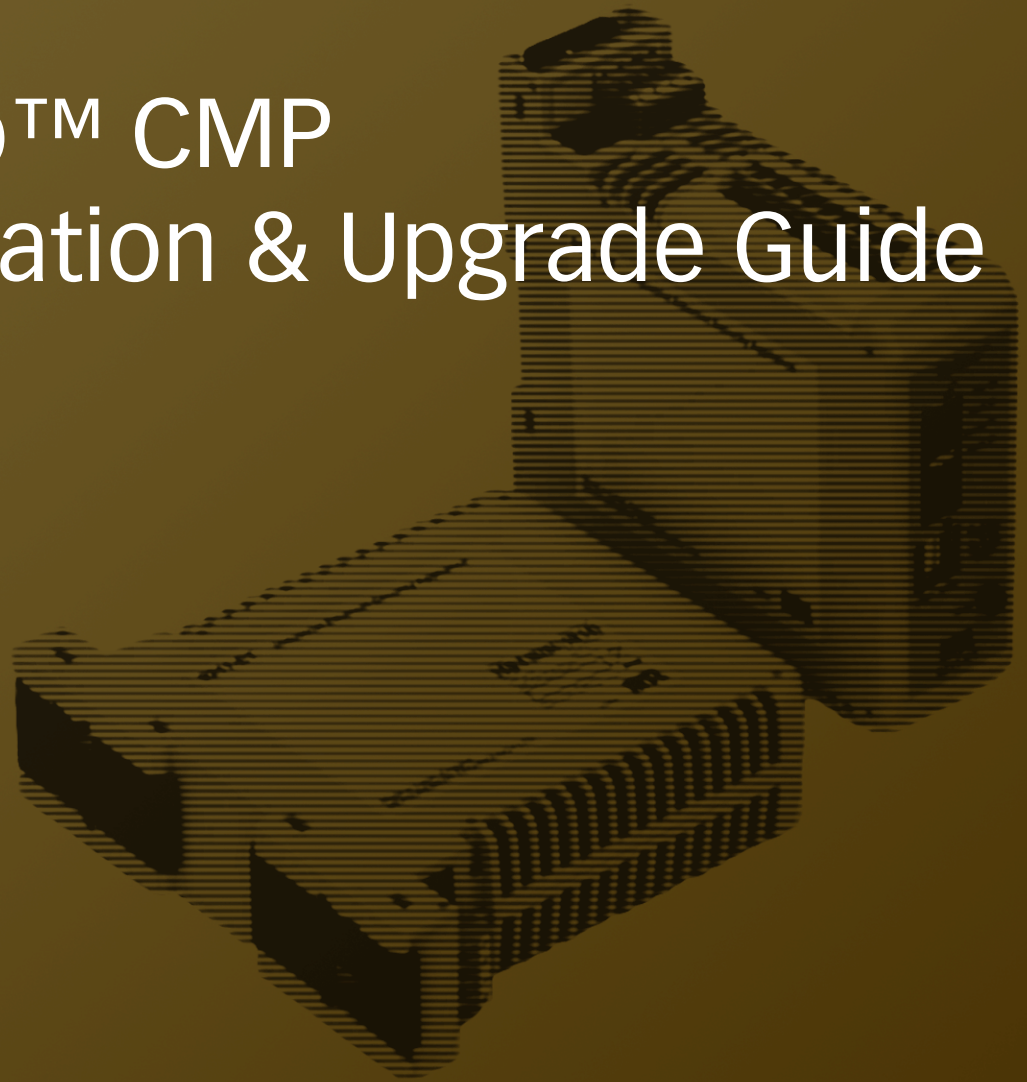


Tofino™ CMP Installation & Upgrade Guide

Version 1.6.0



-BA H7AD

TOFINO™

Copyright Information

©Byres Security Inc and MTL Instruments

While this information is presented in good faith and believed to be accurate, Byres Security Inc. and MTL disclaims the implied warranties of merchantability and fitness for a particular purpose and makes no express warranties except as may be stated in its written agreement with and for its customers. In no event are Byres Security Inc. or MTL liable to anyone for any indirect, special or consequential damages. The information and specifications in this document are subject to change without notice.

Tofino™, Tofino™ Industrial Security Solution and Tofino™ Intrinsically Secure are trademarks of Byres Security Inc. Other brand or product names are trademarks of their respective owners.

While every precaution has been taken in the preparation of this document, the publisher and the author assume no responsibility for errors or omissions, or for damages resulting from the use of information contained in this document or from the use of programs and source code that may accompany it. In no event shall the publisher and the author be liable for any loss of profit or any other commercial damage caused or alleged to have been caused directly or indirectly by this document.

Table of Contents

Overview and Warnings	1
New Installation Procedure	2
Tofino CMP Upgrade from vPre-1.4.0	5
Tofino CMP Upgrade from v1.4.0 or v1.4.1	6
Tofino CMP Upgrade from v1.5.2	10
Tofino SA Upgrade from vPre-1.4.0	13
Tofino SA Upgrade from v1.4.0	14
Tofino SA Upgrade from v1.5.2	20
Upgrading Licenses	23
Appendix A	24
Appendix B	25
Appendix C	27
Technical Support	28

Overview and Warnings

The Tofino Central Management Platform (CMP) is a software program that allows you to configure, manage and monitor Tofino SAs in your SCADA and process control network.

This document describes how to install or upgrade the Tofino CMP software on your Windows workstation or server as well as how to upgrade the firmware on your Tofino SAs . If you are running Windows Vista or Windows 7 please read [Appendix C](#).

Installing or Upgrading the Tofino CMP

Two installation cases are covered:

- A new installation of the Tofino CMP software on a PC which has not previously run the Tofino CMP software – please refer to the [New Installation Procedure](#)
- An upgrade installation, where an older version of the Tofino CMP is upgraded to the current shipping version – please refer to the appropriate section depending on which version you are running:

[Versions Pre-1.4.0](#)

[Version 1.4.0 or 1.4.1](#)

[Version 1.5.2](#)

Upgrading Tofino SAs

Please refer to the appropriate section depending on which version* of Tofino SAs you have:

[Version Pre-1.4.0](#)

[Version 1.4.0](#)

[Version 1.5.2](#)



IMPORTANT!! The Tofino SA now has its own IANA assigned TCP/UDP port number - 6689. Please see [Appendix A](#) for details on transitioning to this new port number.

*If you do not know which version of Tofino SAs you have, please refer to [Appendix B](#).

New Installation Procedure

This section details the procedure for installing the Tofino CMP on a computer that has never had the Tofino CMP software installed on it.

The steps for installing a new copy of the Tofino CMP are as follows:

- Run the Tofino CMP installer from the install CD.
- Obtain a Tofino CMP license along with required Loadable Security Modules (LSMs) licenses.
- Assign a license file to the new Tofino CMP.

Initial Preparation

Prior to installing your Tofino CMP software, please verify that you have the following materials ready:

- ▶ Tofino CMP Installer CD.
- ▶ License Activation Key (a 25 character string of letters and numbers such as X4QP9-RMNRQ-B59SD-AG5H6-KSFRW)

Note: Your License Activation Key is supplied by your Sales Representative. If you do not have a License Activation Key, please contact technical support.

Run the Tofino CMP Installer from the Install CD

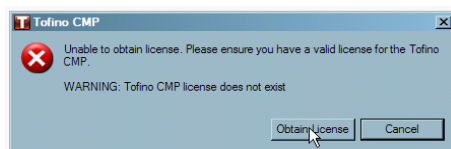
The Tofino CMP software should be installed on the desired computer:

- Place the Tofino CMP Install CD in the CD-ROM drive.
- If Autoplay is enabled on the computer, the installer will begin automatically.
- If Autoplay is not enabled, go to My Computer and double-click on the CD-ROM drive where the Tofino CMP disk is installed. If the Installer starts, proceed to the next step. If not, you will see a folder with several files including Tofino CMP Setup.exe. Double-click this file to begin the installer.
- Follow the on-screen instructions to install the Tofino CMP.

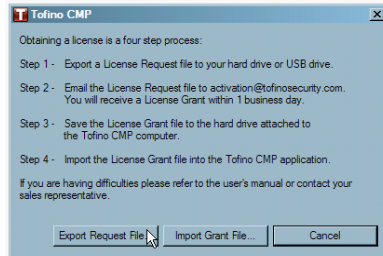
Obtaining Tofino CMP and LSM Licenses

Once the Tofino CMP has been installed on the desired computer, start the Tofino CMP.

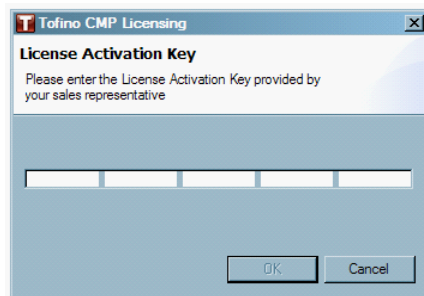
- Ensure you possess a valid License Activation Key. These are in the form of a 25 character string of numbers and letters (for example, X4QP9-RMNRQ-B59SD-AG5H6-KSFRW) and are typically printed on a paper certificate. If you do not have a License Activation Key, please contact sales support in your area.
- An error message will appear indicating that the licensing needs to be set-up. Click "Obtain License" in order to proceed (this will allow you to obtain both the Tofino CMP license and LSM licenses you require at the same time).



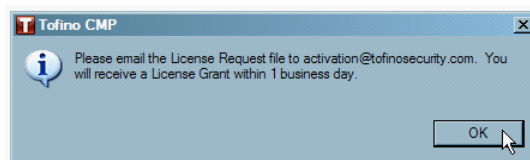
- Next click "Export Request File"; this will create the License Request file you will send to activation@tofinosecurity.com in order to request and activate your Tofino CMP and LSM licenses. Please note that activation will take 1 business day.



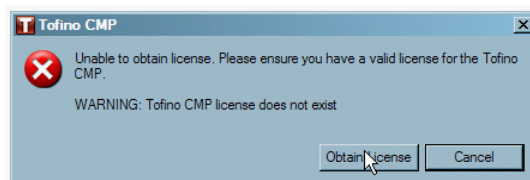
- Next, you will be asked to enter the License Activation Key, click "OK".



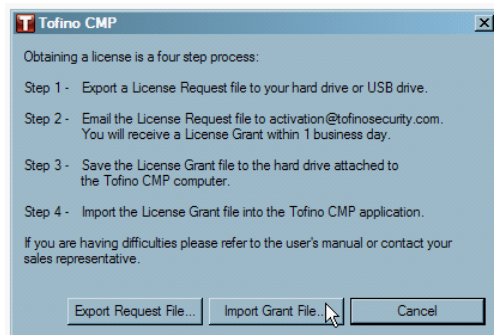
- A Save As window will open. Type in a name for the License Request file and then click "Save". Remember that you will need to email this file, so you may want to save it to a USB storage device or a server with email access.
- Click "OK" and then shut down the Tofino CMP.
- Now you will need to email the License Request file that you have created to activation@tofinosecurity.com, and the License Grant file will be sent back to you within one business day. If you have any questions or concerns, please contact your local sales representative or technical support.



- Once the License Grant file has been returned to you, save it to a location you will remember and then re-start the Tofino CMP, and click "Obtain License".

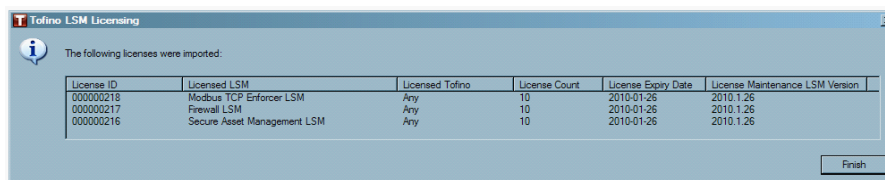


□ Next, click "Import Grant File..."

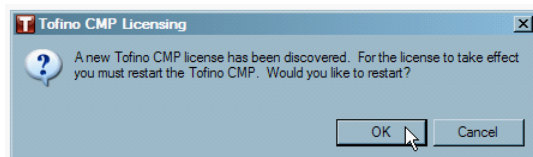


□ A window will open. Navigate to where you have saved the License Grant file, select it, and then click "Open".

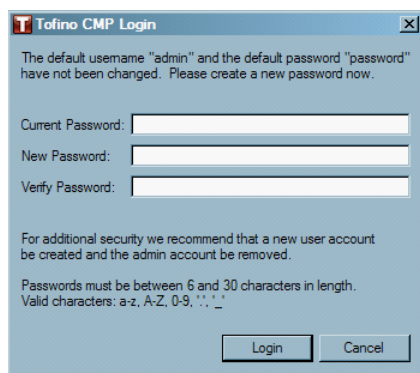
□ Next you will be shown a window that summarizes the LSM licenses you have been granted. Click "Finish".



□ A window will open explaining that a Tofino CMP license has been discovered and the Tofino CMP needs to be restarted. Click "OK".



□ The Tofino CMP will restart, and you will be able to log into the Tofino CMP. You will be asked to change the default password which is "password". **Note:** The default user name is "admin".



□ The Tofino CMP is now installed.

Tofino CMP Upgrade from vPre-1.4.0

Upgrading the Tofino CMP from Pre-1.4.0 Versions

If you are upgrading from a version before 1.4.0, **do not proceed**. Instead please contact Byres Security Inc by emailing support@tofinosecurity.com

Tofino CMP Upgrade from v1.4.0 or v1.4.1

Upgrading the Tofino CMP from Version 1.4.0 or 1.4.1

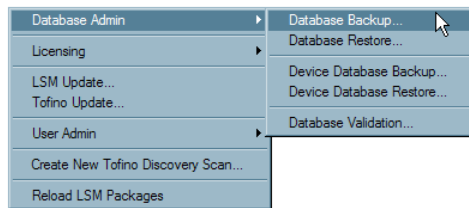
This section details the procedure for upgrading the Tofino CMP from versions 1.4.0 or 1.4.1

The steps for updating the Tofino CMP are as follows:

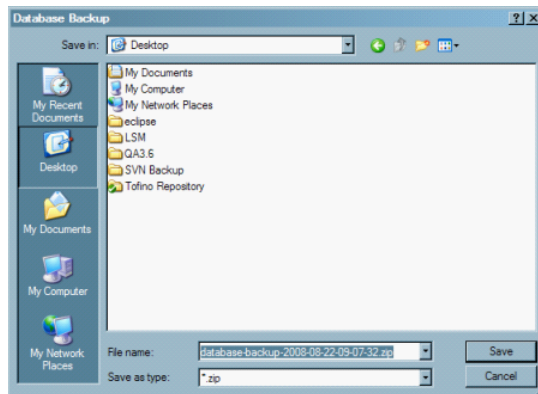
- Back up your Tofino CMP database
- Run the Tofino CMP 1.6.0 Installer CD
- Import the new grant file (.gnt) supplied to you by Byres Security (if you do not have a .gnt file please contact support@tofinosecurity.com).
- Restore your database to your Tofino CMP

Backup Your Tofino CMP Database

- Back up the current Tofino database to a directory on your Tofino CMP computer by selecting the menu item **Tools > Database Admin > Database Backup...**



- Choose a location to save the backup copy and remember the location of this file.



- Close the Tofino CMP

Run the Tofino CMP Installer from the Install CD

The Tofino CMP software should be installed on the desired computer:

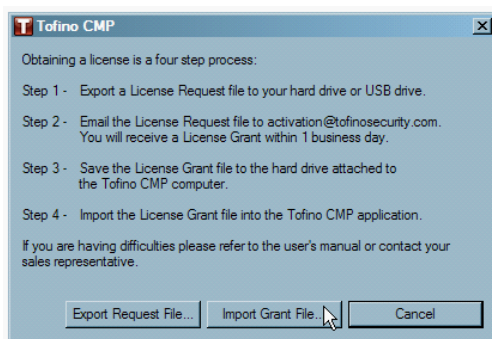
- Place the Tofino CMP Version 1.6.0 Install CD in the CD-ROM drive.
- If Autoplay is enabled on the computer, the installer will begin automatically.

- If Autoplay is not enabled, go to My Computer and double-click on the CD-ROM drive where the Tofino CMP disk is installed. If the Installer starts, proceed to the next step. If not, you will see a folder with several files including Tofino CMP Setup v1.6.0-r9112.exe. Double-click this file to begin the installer.
- Follow the on-screen instructions to install the Tofino CMP.

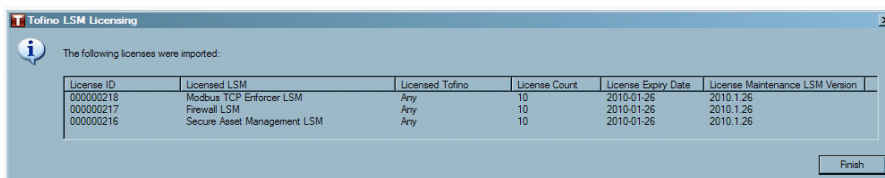
Import the New Grant File

In order for the new version of the Tofino CMP software to function you will need to restore the grant file (.gnt) provided to you by Byres Security:

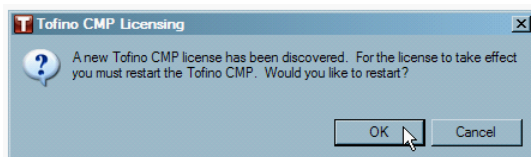
- From the Tools menu select Licensing > Import Grant File.
- Click the Import Grant File... button.



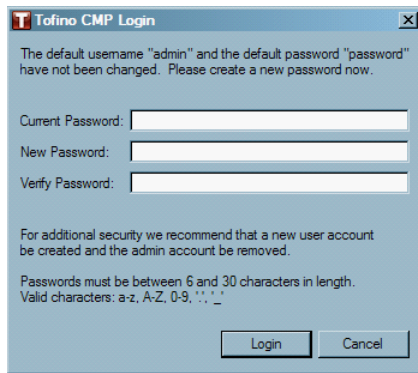
- A window will open. Navigate to where you have saved the License Grant file provided to you by Byres Security, select it, and then click "Open".
- Next you will be shown a window that summarizes the LSM licenses you have been granted. Click "Finish".



- A window will open explaining that a Tofino CMP license has been discovered and the Tofino CMP needs to be restarted. Click "OK".

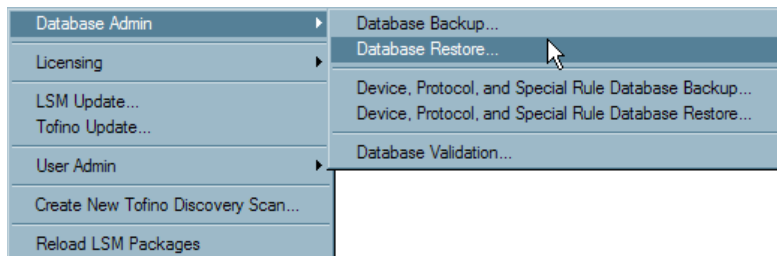


- The Tofino CMP will restart, and you will be able to log into the Tofino CMP. You will be asked to change the default password which is "password". **Note:** The default user name is "admin".

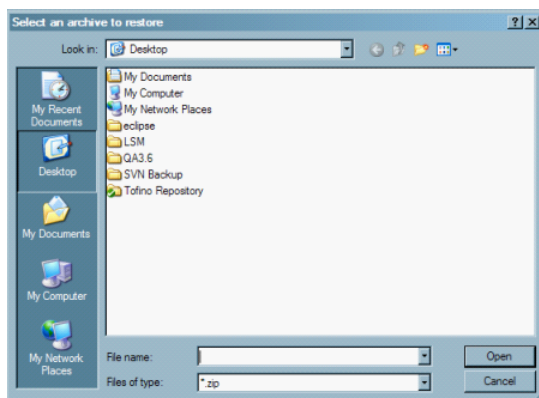


Restore Your Database

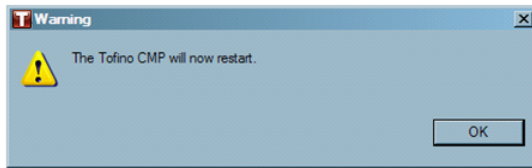
- Launch the Tofino CMP as you normally would, and log-in. The default username is admin and the default password is password.
- Go to the Help menu and select About. The version should be 1.6.0-r9112. If your Tofino CMP is NOT at this version, contact technical support: support@tofinosecurity.com
- Restore your old database. To do this select **Tools > Database Admin > Database Restore...**



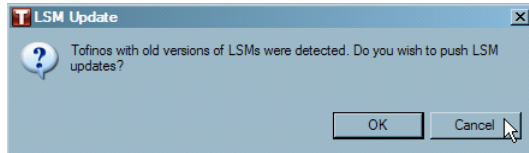
- Click "OK".
- Navigate to the location of your old database file and select it.



- Click "OK". The Tofino CMP will now restart.

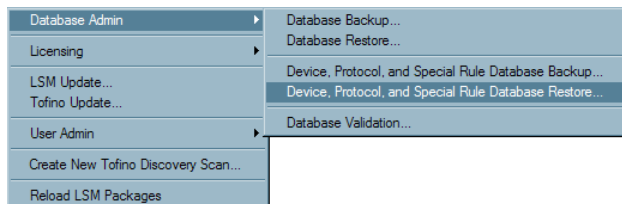


- A dialog may open saying "Tofinos with old versions of LSMs were detected. Do you wish to push Tofino updates?" Click "Cancel". If the dialog does not appear, continue on to the next step.

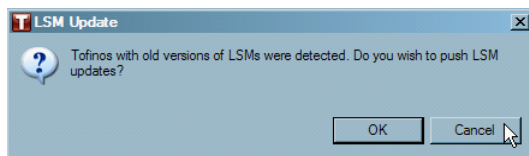


- Go to the Help menu and select "About". The version should be 1.6.0-r9112. If your Tofino CMP is NOT at this version, contact technical support: support@tofinosecurity.com
- Lastly, to upgrade to the latest version of the Node, Protocols and Special Rule databases, select **Tools > Database Admin > Device, Protocol and Special Rule Database Restore...**

Note: This upgrade will override your current Node, Protocols and Special Rule Database; any changes you have made to this database will be overwritten.



- Navigate to and select the .zip file (devicedatabase-backup-1.6.0-r9112) located at C:\Program Files\Tofino CMP.
- This will upgrade your device, protocol and special rules databases.
- Click "OK". The Tofino CMP will now restart. **Note:** The password window, asking you to enter a new password different from the default password, may appear again.
- A dialog may open saying "Tofinos with old versions of LSMs were detected. Do you wish to push Tofino updates?" Click "Cancel".



Now that the Tofino CMP is upgraded to version 1.6.0 we strongly recommend that you update the Tofino Security Appliance(s) to version 1.6.0 as soon as possible. The 1.6.0 Tofino CMP will manage 1.4.0 Tofino SAs but some functionality may be limited.

See: [Tofino SA Upgrade Procedure from Version 1.4.0](#)

Tofino CMP Upgrade from v1.5.2

Upgrading the Tofino CMP from Version 1.5.2

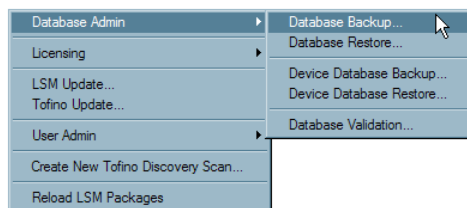
This section details the procedure for upgrading the Tofino CMP from version 1.5.2.

The steps for updating the Tofino CMP are as follows:

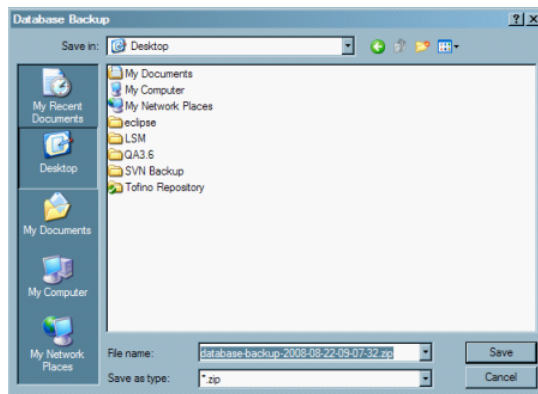
- Back up your Tofino CMP database
- Run the Tofino CMP 1.6.0 Installer CD
- Restore your database to your Tofino CMP

Backup Your Tofino CMP Database

- Back up the current Tofino database to a directory on your Tofino CMP computer by selecting the menu item **Tools > Database Admin > Database Backup...**



- Choose a location to save the backup copy and remember the location of this file.



- Close the Tofino CMP

Run the Tofino CMP Installer from the Install CD

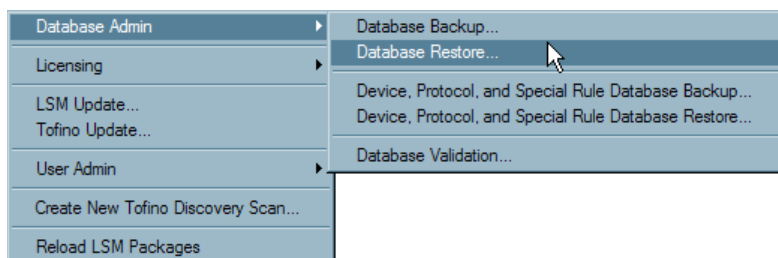
The Tofino CMP software should be installed on the desired computer:

- Place the Tofino CMP Version 1.6.0 Install CD in the CD-ROM drive.
- If Autoplay is enabled on the computer, the installer will begin automatically.
- If Autoplay is not enabled, go to My Computer and double-click on the CD-ROM drive where the Tofino CMP disk is installed. If the Installer starts, proceed to the next step. If not, you will see a folder with several files including Tofino CMP Setup v1.6.0-r9112.exe. Double-click this file to begin the installer.

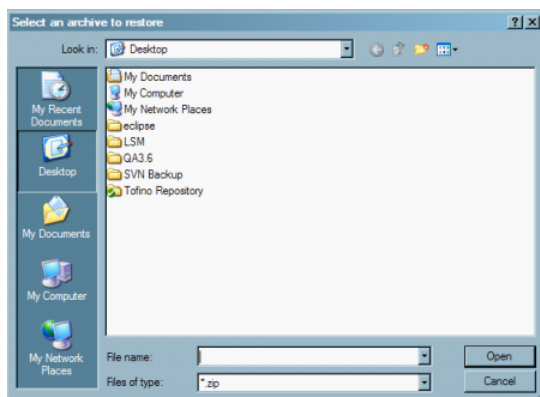
- Follow the on-screen instructions to install the Tofino CMP.

Restore Your Database

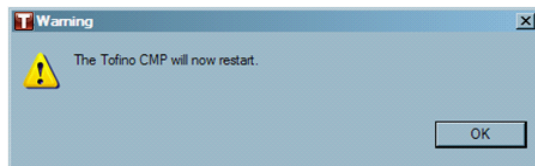
- Launch the Tofino CMP as you normally would, and log-in. The default username is admin and the default password is password.
- Go to the Help menu and select About. The version should be 1.6.0-r9112. If your Tofino CMP is NOT at this version, contact technical support: support@tofinosecurity.com
- Restore your old database. To do this select **Tools > Database Admin > Database Restore...**



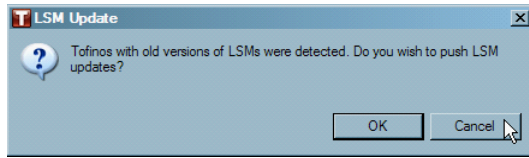
- Click "OK".
- Navigate to the location of your old database file and select it.



- Click "OK". The Tofino CMP will now restart.

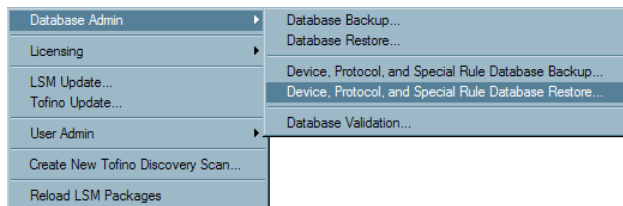


- A dialog may open saying "Tofinos with old versions of LSMs were detected. Do you wish to push Tofino updates?" Click "Cancel". If the dialog does not appear, continue on to the next step.

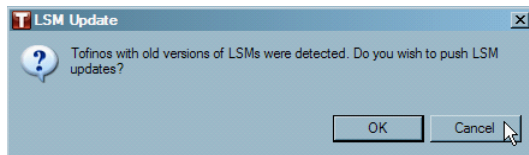


- Go to the Help menu and select "About". The version should be 1.6.0-r9112. If your Tofino CMP is NOT at this version, contact technical support: support@tofinosecurity.com
- Lastly, to upgrade to the latest version of the Node, Protocols and Special Rule databases, select **Tools > Database Admin > Device, Protocol and Special Rule Database Restore...**

Note: This upgrade will override your current Node, Protocols and Special Rule Database; any changes you have made to this database will be overwritten.



- Navigate to and select the .zip file (devicedatabase-backup-1.6.0-r9112) located at C:\Program Files\Tofino CMP.
- This will upgrade your device, protocol and special rules databases.
- Click "OK". The Tofino CMP will now restart. **Note:** The password window, asking you to enter a new password different from the default password, may appear again.
- A dialog may open saying "Tofinos with old versions of LSMs were detected. Do you wish to push Tofino updates?" Click "Cancel".



Now that the Tofino CMP is upgraded to version 1.6.0 we strongly recommend that you update the Tofino Security Appliance(s) to version 1.6.0 as soon as possible. The 1.6.0 Tofino CMP will manage 1.5.2 Tofino SAs but some functionality may be limited.

See: [Tofino SA Upgrade Procedure from Version 1.5.2](#)

Tofino SA Upgrade from vPre-1.4.0

If you are upgrading from a version before 1.4.0, **do not proceed**. Instead please contact Byres Security Inc by emailing support@tofinosecurity.com

Tofino SA Upgrade from v1.4.0

This section outlines the steps for upgrading the Tofino SA firmware to version 1.6.0 from version 1.4.0.

The steps for updating your Tofino SAs to 1.6.0 is done in two steps as follows:

- Upgrade your Tofino SAs from version 1.4.0 to version 1.5.2
- Upgrade your Tofino SAs from version 1.5.2 to version 1.6.0



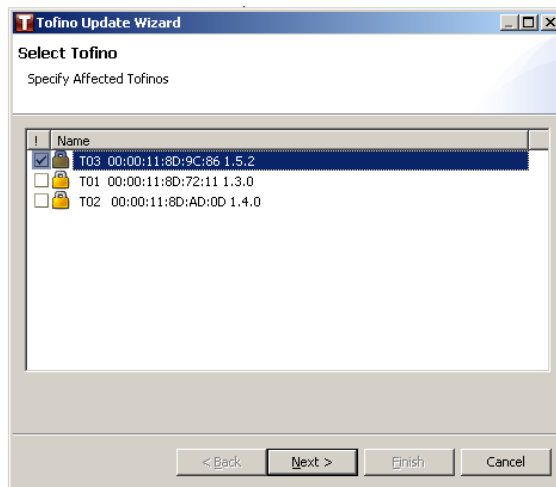
The Tofino SA update to version 1.5.2 is a **Level Four Update**. There will be some "packet loss" for up to 60 seconds



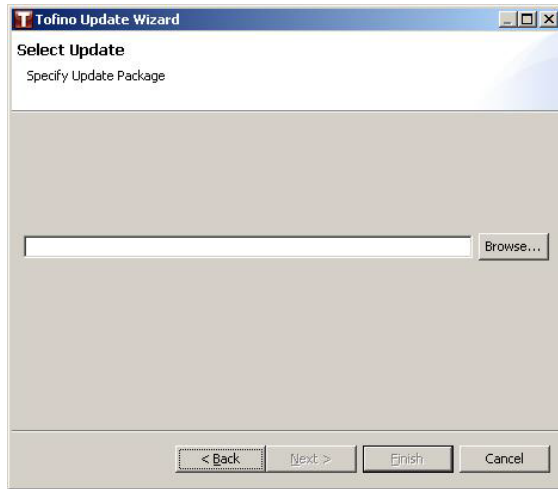
The Tofino SA update to version 1.6.0 is a **Level Four Update**. There will be some "packet loss" for up to 60 seconds

Upgrading your Tofino SAs to version 1.5.2

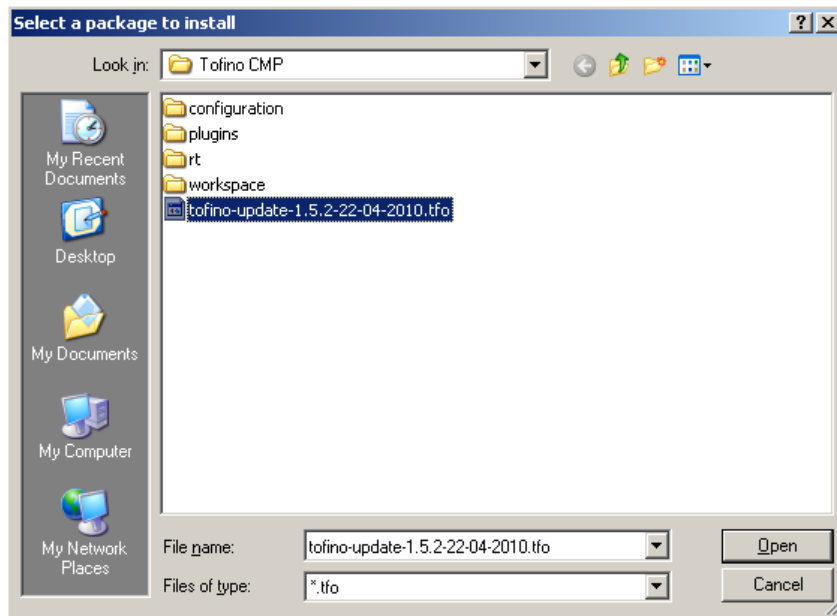
- The Tofino SA firmware is updated using the "Tofino Update" command in the Tofino CMP software.
- Start the Tofino CMP application and log in.
- Start a Tofino SA update by clicking **Tools > Tofino Update** to bring up the Tofino Selection dialog. Check the box of the Tofino SA that you would like to update and then click "Next".



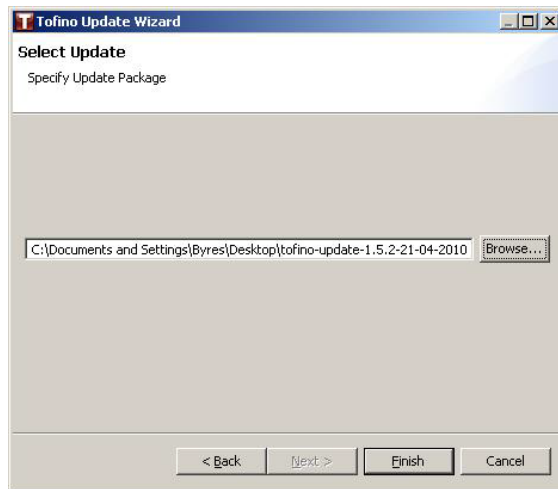
- Click on the "Browse" button to search for the .tfo file provided.



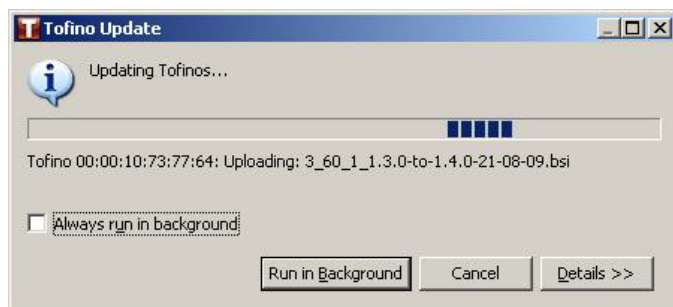
- Select the .tfo file (tofino-update-1.6.0-2010-08-31.tfo usually found at C:\Program Files\Tofino CMP) and click "Open".



- Click "Finish" to update the Tofino SA with the latest .tfo file.



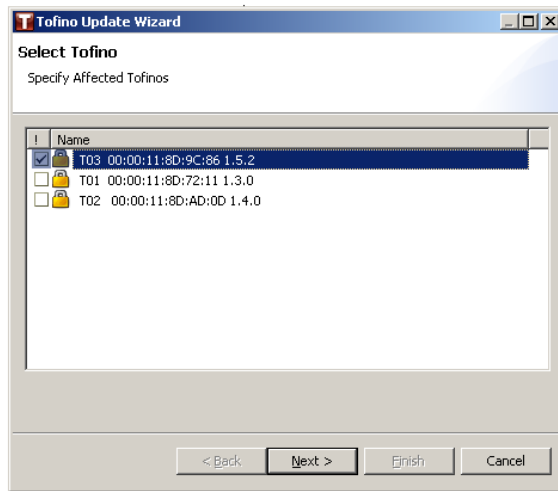
- An Update window will open warning that this is an **Effect Level 4 Update**. Click "Yes" to proceed with the update.
- A progress dialogue will appear and will run until the update has been completed.



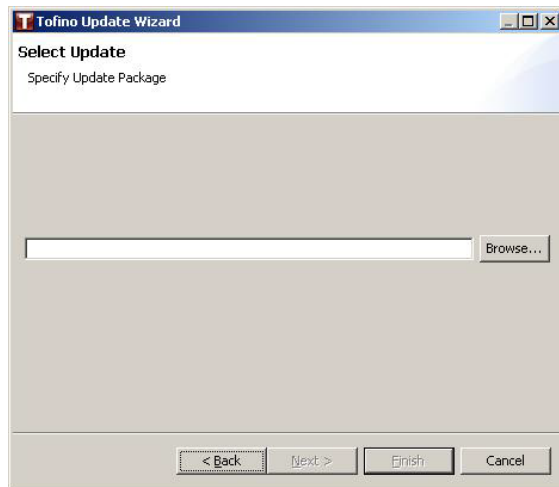
- Your Tofino SA is now updated to version 1.5.2.

Upgrading your Tofino SAs to version 1.6.0

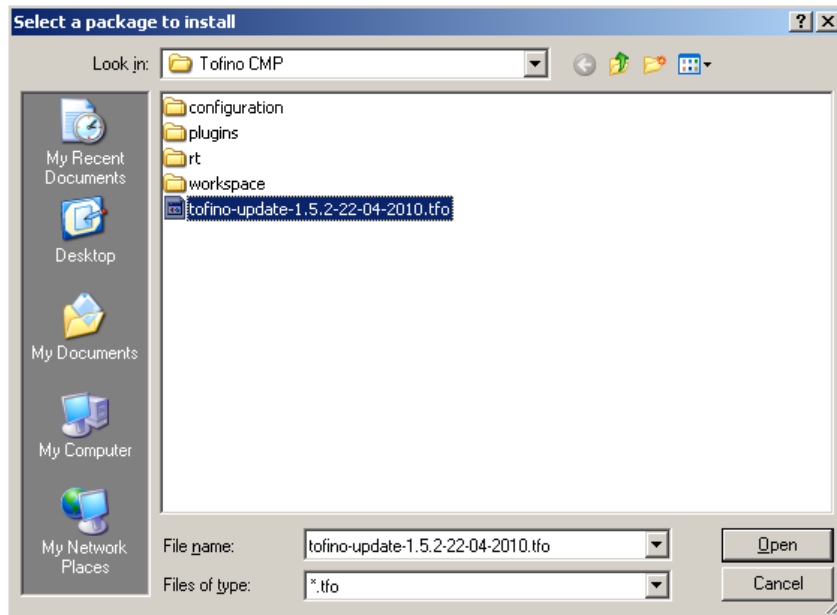
- The Tofino SA firmware is updated using the "Tofino Update" command in the Tofino CMP software.
- Start a Tofino SA update by clicking **Tools > Tofino Update** to bring up the Tofino Selection dialog. Check the box of the Tofino SA that you would like to update and then click "Next".



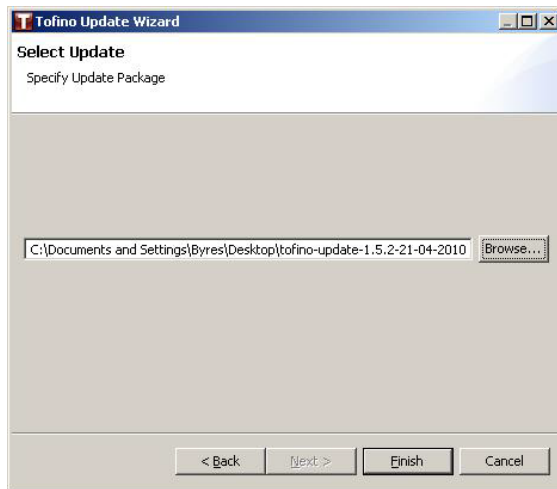
- Click on the "Browse" button to search for the .tfo file provided.



- Select the .tfo file (tofino-update-1.6.0-2010-08-31.tfo usually found at C:\Program Files\Tofino CMP - **Note: this will be the same .tfo file as just used to update to v1.5.2**) and click "Open".

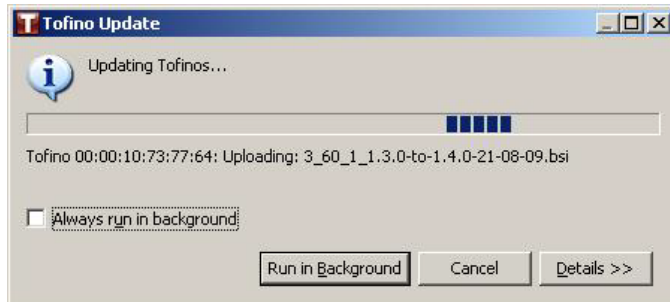


- Click "Finish" to update the Tofino SA with the latest .tfo file.



- An Update window will open warning that this is an **Effect Level 4 Update**. Click "Yes" to proceed with the update.

- A progress dialogue will appear and will run until the update has been completed.



Your Tofino SA is now updated to version 1.6.0.

Tofino SA Upgrade from v1.5.2

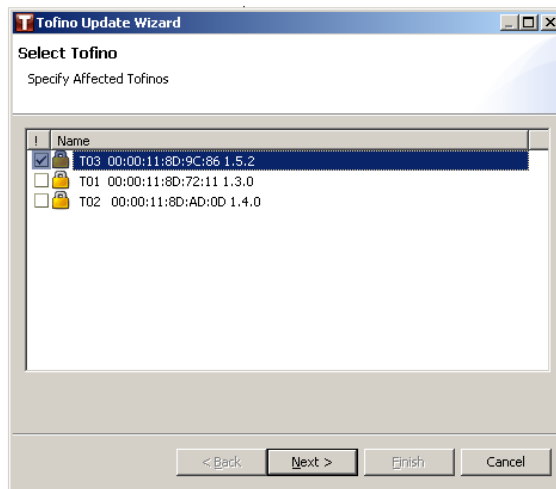
This section outlines the steps for upgrading the Tofino SA firmware to version 1.6.0 from version 1.5.2.



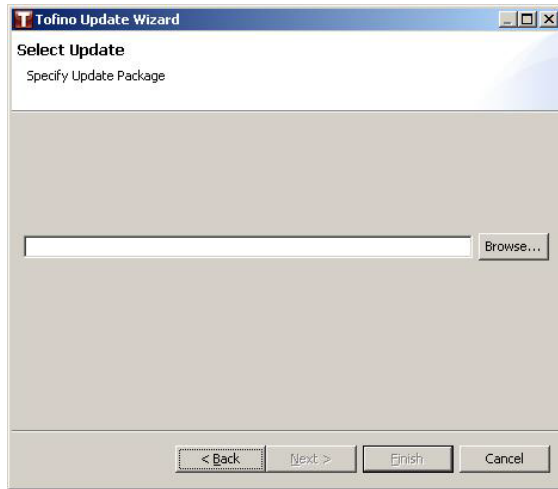
The Tofino SA update to version 1.6.0 is a **Level Four Update**. There will be some "packet loss" for up to 60 seconds

Upgrading your Tofino SAs to version 1.6.0

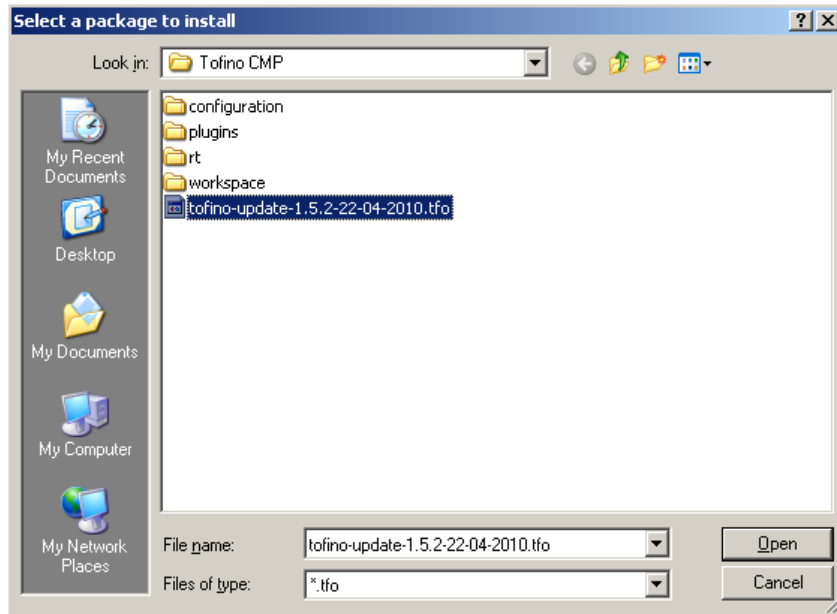
- The Tofino SA firmware is updated using the "Tofino Update" command in the Tofino CMP software.
- Start the Tofino CMP application and log in.
- Start a Tofino SA update by clicking **Tools > Tofino Update** to bring up the Tofino Selection dialog. Check the box of the Tofino SA that you would like to update and then click "Next".



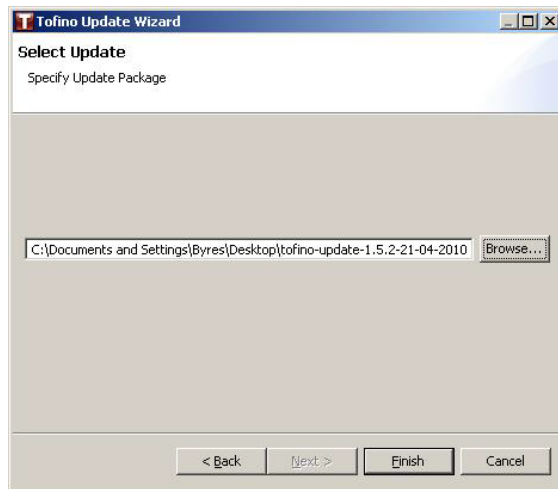
- Click on the "Browse" button to search for the .tfo file provided.



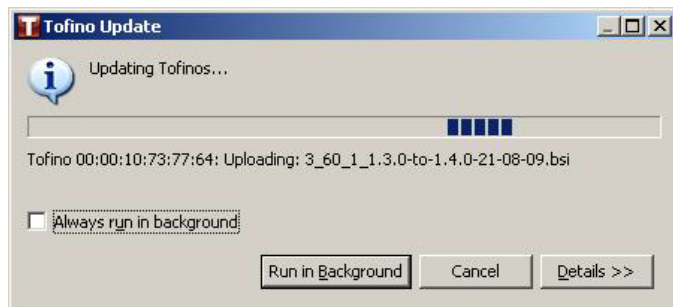
- Select the .tfo file (tofino-update-1.6.0-2010-08-31.tfo usually found at C:\Program Files\Tofino CMP) and click "Open".



- Click "Finish" to update the Tofino SA with the latest .tfo file.



- An Update window will open warning that this is an **Effect Level 4 Update**. Click "Yes" to proceed with the update.
- A progress dialogue will appear and will run until the update has been completed.



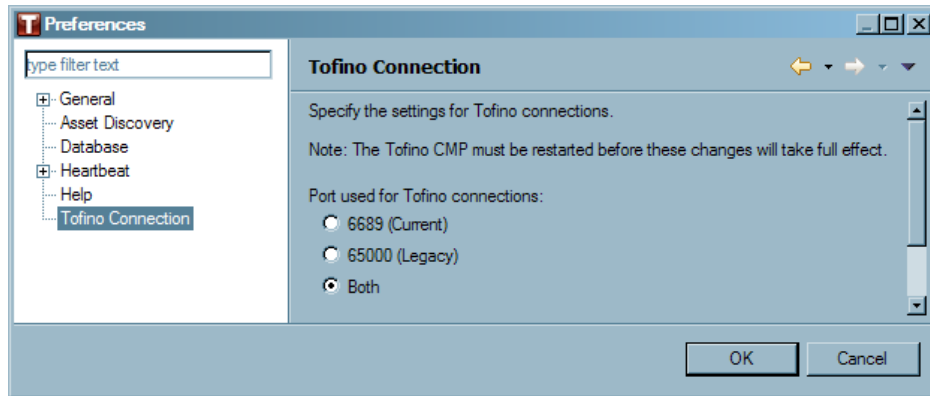
- Your Tofino SA is now updated to version 1.6.0.

Upgrading Licenses

To upgrade the Tofino CMP or LSM licenses, follow these steps:

- Have your new License Activation Key ready.
- If this is a case where the Tofino CMP is going to be upgraded, upgrade your Tofino CMP as per the upgrade procedure found in this manual.
- Open the Tofino CMP and select Tools > Licensing > Export Request File...
- Enter your License Activation Key and click OK.
- Name your request file and save it to a location that is accessible for emailing.
- Email the request file to activation@tofinosecurity.com
- Once the License Grant file has been returned to you, save it to a location you will remember and then re-start the Tofino CMP, and click *Obtain License* and then *Import Grant File...* If this dialog does not appear, once the Tofino CMP has opened, select Tools > Licensing > Import Request File...
- You now have upgraded licenses.

Appendix A



The Tofino SA now has its own IANA assigned TCP and UDP port number - 6689. The default setting is to currently use both the legacy port number (65000) as well as the newly assigned port number (6689) in order to simultaneously support both legacy and current Tofino SAs.

With the default settings in place the Tofino CMP runs more slowly because it will attempt to use both the new port number and the legacy port number when it connects to a Tofino SA. For better performance it is important to change over to the new port number (6689). **Please remember you will also have to change the rules on any external firewalls that Tofino CMP traffic must pass through to allow this new port number.**

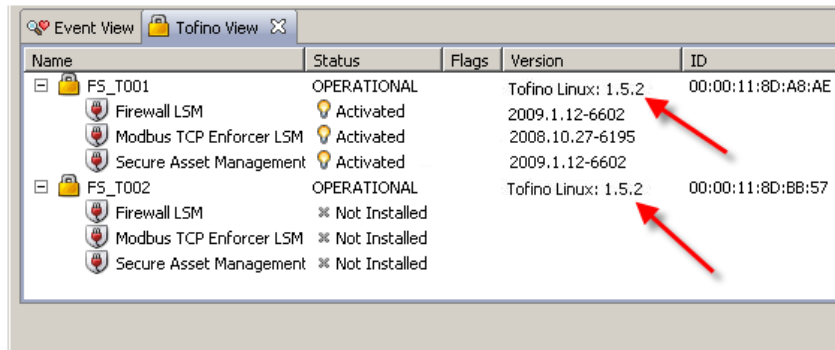
To change over to the new port number, simply click the port number 6689 in the Tofino CMP Preferences (Windows > CMP Preferences) and then click OK. The Tofino CMP will then need to be re-started in order for these changes to take effect.

Appendix B

If you do not know which version of Tofino SAs you have, there are two ways to find out:

- ▶ Using the [Tofino View](#) in the Tofino CMP (generally top left hand corner of the screen).
- ▶ Performing a [USB Save](#) on your Tofino SA.

Tofino View



Name	Status	Flags	Version	ID
FS_T001	OPERATIONAL		Tofino Linux: 1.5.2	00:00:11:8D:A8:AE
Firewall LSM	Activated		2009.1.12-6602	
Modbus TCP Enforcer LSM	Activated		2008.10.27-6195	
Secure Asset Management	Activated		2009.1.12-6602	
FS_T002	OPERATIONAL		Tofino Linux: 1.5.2	00:00:11:8D:BB:57
Firewall LSM	Not Installed			
Modbus TCP Enforcer LSM	Not Installed			
Secure Asset Management	Not Installed			

USB Save

The USB Save function copies diagnostic files from the Tofino SA to the USB storage device. From these files you will be able to find out which version your Tofino SAs are at .

- Insert a USB storage device into one of the USB ports.
- Press and hold the Config button for 1-2 (but less than 5) seconds.
- The Fault-Event-Mode LEDs will begin to flash, in downward sequence, to indicate a "Save."
- When the flashing sequence stops remove the USB storage device.
- If the save was successful the Tofino SA LEDs will revert to the state they were in prior to the saving action.

The file name ending in .txt should be opened in WordPad and the following will be displayed, including the version number of the Tofino SA.

```
=====
Tofino Version information:
  Tofino Firmware version: Tofino Linux: 1.5.2
Tofino Hardware Info:
  Hardware : Arcom VULCAN
  Processor : XScale-IXP42x Family rev 2 (v5b)
  Flash Type: P-Flash
  Tofino ID: 00:00:11:8D:A8:AE
=====

Network Statistics
unsecured IF ifconfig
eth0  Link encap:Ethernet HWaddr 00:80:66:04:64:E8
      inet6 addr: fe80::280:66ff:fe04:64e8/64 Scope:Link
      UP BROADCAST RUNNING MULTICAST MTU:1500 Metric:1
      RX packets:7478 errors:0 dropped:0 overruns:0 frame:0
      TX packets:6930 errors:0 dropped:0 overruns:0 carrier:0
      collisions:0 txqueuelen:100
      RX bytes: 665161 (647.1 KB) TX bytes: 4888416 (4.7 MB)
```

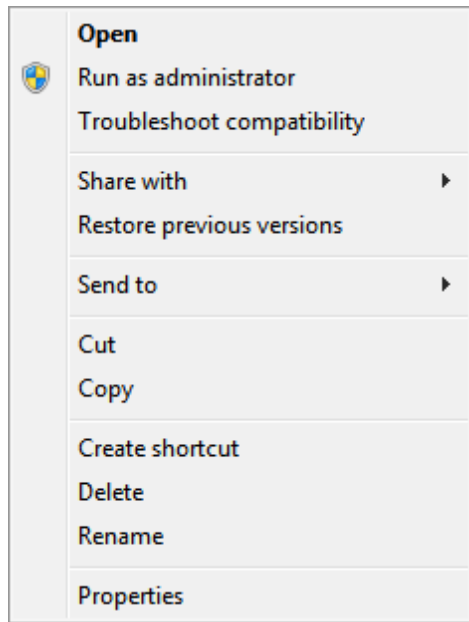


Appendix C

If you are running Windows Vista or Windows 7, you must install the Tofino CMP and activate licenses using Administrative access. Once the Tofino CMP has been installed and licensed, it can be managed using regular user access.

To install the Tofino CMP as an Administrator follow these steps:

- Right click on the Tofino CMP Setup v1.6.0-r9112.exe file and select "Run as administrator".



- Follow the on-screen instructions to install the Tofino CMP.
- Set up the licensing of the Tofino CMP and LSMs. See: [New Installation Procedure](#)

Technical Support

If you experience a problem while upgrading your Tofino system and need assistance (or have suggestions for improvement), please send an email to:

support@tofinosecurity.com

To ensure the best possible attention, please indicate in the subject line of your email if the problem is "Urgent", "Normal" or "Information". The latter can be used to report an observed issue that is not causing difficulty, but you think we should be aware of.

You will receive an auto-reply message from our tracking system, which will include a tracking reference number. For all other correspondence regarding that particular issue, please reply to that message as this helps us manage the resolution of your issue.

The technical staff are automatically informed of any mail sent to the above email address so there is no need to send copies to technical contacts within either organization.

We can help you more easily if you provide the following information:

- ▶ Your contact details: Under normal circumstances, we will attempt to contact you via the email address you used when reporting the issue, but if you need to be contacted by other means, we will need those details.
- ▶ The version of your Tofino CMP: To locate this information, start the Tofino CMP software, log in and select the menu item Help > About to view the version number.
- ▶ A description of the issue you are reporting: Please try to be as specific as possible and include details of any testing you have carried out to diagnose or eliminate any problems. Please indicate what network protocols you are using, if you have used them before without difficulty, if the system has ever worked and if so, what are you aware has changed.
- ▶ A description of the network environment in which the Tofino is being deployed: This includes the hardware involved, relevant IP addresses and subnet masks.
- ▶ A backup copy of your Tofino database.

We thank you for your support and interest.

MTL Instruments Pty Limited

9 /12 Billabong Street
Stafford
Queensland 4053
Australia
Tel: + 61 1300 308 374 Fax: + 61 1300 308 463
E-mail: enquiries@mtlaus.com.au

Cooper Electric (Shanghai) Co. Ltd.

Room 2001, China Life Tower
16 Chao Yang Men Wai Street
Chao Yang District, Beijing
China 100020
Tel: + 86 10 5980 0288 Fax: + 86 10 8562 5725
E-mail: bjsales@mtl-inst.cn

MTL Instruments sarl

Les Carrés du Parc
10 rue des Rosiéristes
69410 Champagne au Mont d'Or
France
Tel: +33 (0)4 78 64 98 32 Fax: +33 (0)4 78 35 79 41
E-mail: info@mtl-inst.fr

MTL Instruments GmbH

An der Gumpesbrücke 17
D-41564 Kaarst
Germany
Tel: +49 (0)2131 718930 Fax: +49 (0)2131 7189333
E-mail: info@mtl.de

MTL India

No. 36, Nehru Street
Off Old Mahabalipuram Road
Sholinganallur
Chennai - 600 119
India
Tel: + 91 (0)44 24501660/24501857 Fax: + 91 (0)44 24501463
E-mail: sales@mtlindia.com

MTL Italia srl

Via Cantù 11
I - 20092 Cinisello Balsamo MI
Italy
Tel: +39 (0)2 61802011 Fax: +39 (0)2 61294560
E-mail: info@mtl-inst.it

Cooper Crouse-Hinds Japan KK

MT Building 3F
2-7-5 Shiba Daimon
Minato-ku Tokyo
Japan 105-0012
Tel: +81 (0)3 6430 3128 Fax: +81 (0)3 6430 3129
E-mail: sales@mtlkk.co.jp

Cooper Crouse-Hinds Korea

12F, Vision Tower
707-2 Yeoksam-dong, Gangnam-gu
Seoul 135-080
South Korea
Tel: +82 2 3484 6795 Fax: +82 2 3484 6778

MTL Instruments BV

MTL Instruments BV
Terheijdensweg 465
4825BK Breda
The Netherlands
Tel: +31(0)76 7505360 Fax: +31(0)76 7505370
E-mail: info@mtlbenelux.com

Cooper Crouse-Hinds Pte Ltd.

No.2 Serangoon North Avenue 5
#06-01 Fu Yu Building
Singapore 554911
Tel: +65 6 487 7887 Fax: +65 6 487 7997
E-mail: sales@mtlsing.com.sg

MTL Instruments

Villa No. 4, Sector 2-17, Street 6
PO Box 53234,
Abu Dhabi, UAE
Tel: +971 2 446 6840 Fax: +971 2 446 6841
E-mail: mtlgulf@mtl-inst.com

Measurement Technology Limited

Great Marlings, Butterfield, Luton, Beds
England LU2 8DL
Tel: +44 (0)1582 723633 Fax: +44 (0)1582 422283
E-mail: enquiry@mtl-inst.com

Cooper Crouse-Hinds MTL Inc

3413 N. Sam Houston Parkway W.
Suite 210
Houston TX 77086
USA
Tel: +1 281 571 8065 Fax: +1 281 571 8069
E-mail: csinfo@mtl-inst.com



EUROPE (EMEA) Tel: +44 (0)1582 723633

AMERICAS Tel: +1 888 9TOFINO

INTERNATIONAL Tel: +1 780 485 3139

ASIA-PACIFIC Tel: +65 6 487 7887

E-mail: tofinosupport@mtl-inst.com Web site: www.mtl-inst.com/tofino

