

Zone Level Security™ for your control network



Tofino Security Appliance

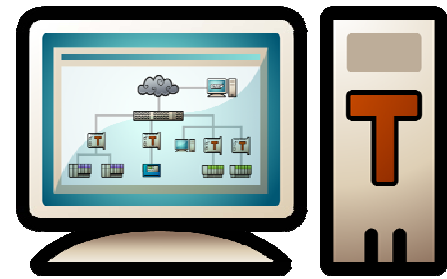
Zone Level Security for your control network

Protect your control system against network problems and cyber threats

You may never be attacked by a serious hacker, but typical control networks are extremely vulnerable to simple day to day security issues. Poor network segmentation, unprotected points of entry into the network, 'soft' targets such as un-patched PCs and vulnerable PLCs, and human error can result in significant production losses and even safety issues.

The Tofino Industrial Security Solution is a distributed security solution that quickly and cost-effectively implements cyber security protection within your control network.

Tofino's flexible architecture allows you to create security zones - Zone Level Security - throughout your control network to protect critical system components. *Tofino* helps you meet and exceed NERC CIP requirements and ANSI/ISA-99 Standards. And best of all, it helps you avoid expensive down time and achieve optimal performance in your plant.



Tofino Central Management Platform (CMP)

Centralized security management



Tofino Loadable Security Modules (LSMs)

Customize the security functions in each zone

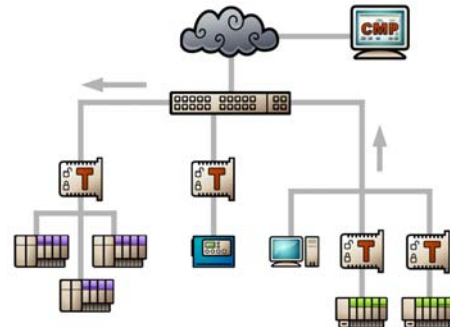
Design your security system in four easy steps

Step One: Determine where to place Tofino Security Appliances to create Zone Level Security™

Determine where Tofino Security Appliances need to be placed to create **Zone Level Security™** for the devices in your network.

Note: the ANSI/ISA-99 Standards recommend containing communication in control sub-systems known as “zones”.

For more information on security zones, visit <http://www.tofinosecurity.com/isa99>



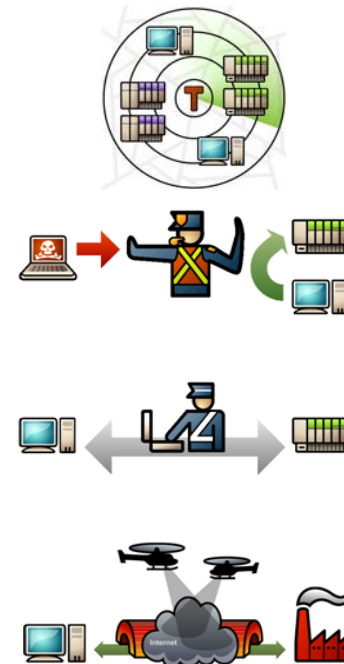
Step Two: Determine which Tofino LSMs are required to secure each hardware location

Do you require ‘radar’ sweeping your network to track every existing and incoming device communicating through a specific Tofino Security Appliance? Then load the **Tofino™ Secure Asset Management LSM**.

Do you require a ‘traffic control cop’ for industrial networks checking all communications against a list of traffic rules and blocking and reporting traffic that does not match the rules? Then load the **Tofino™ Stateful Firewall Module**.

Do you require a ‘border guard’ inspecting every Modbus command and response, blocking and reporting function codes or register addresses not on the ‘allowed’ list? Then load the **Tofino™ Modbus TCP Deep Packet Inspection LSM**.

Do you require secure communications ‘tunnels’ over your corporate network or the Internet? Then load the **Tofino™ VPN Client and Server LSMs**.



Step Three: Choose the best server or workstation for the Tofino Central Management Platform

The **Tofino™ Central Management Platform** software enables configuration, management and monitoring of all your Tofino Security Appliances from one workstation.



Step Four: For product and ordering details, go to www.tofinosecurity.com or contact:



EUROPE (EMEA) +44 (0) 1 582 723633
AMERICAS +1 888 9TOFINO
ASIA PACIFIC +65 6 487 7887
EMAIL tofinosupport@mtl-inst.com

TOFINO™
tofineseurity.com