
Mosaic Mimic Systems

The ideal method of displaying a complete plant overview

Flexible design and assembly

Rigid construction fitted with UV and temperature stable polycarbonate tiles

Supplied as mimic only or fully wired system

Simple and quick to modify

Integrated conventional or serial annunciators

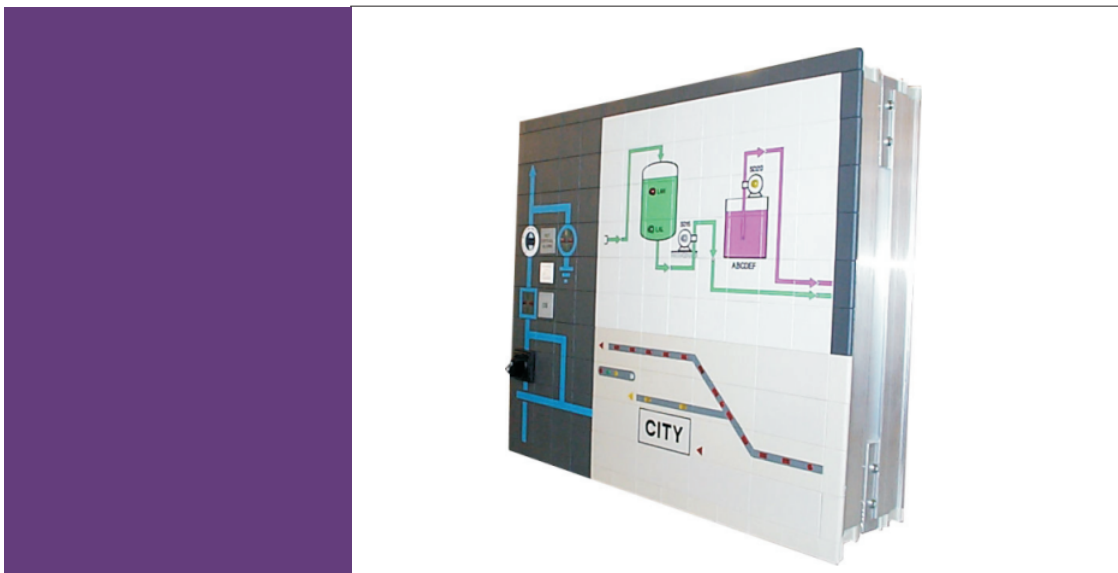
Full integration of a range of third party indicators, switches, pushbuttons and instruments

Wall or panel mounted versions

In safety critical applications and complex process plants mosaic mimics are used to provide operators with a complete overview of the plant. This process visualisation ensures operators are fully informed, in the clearest possible way, of plant operational and safety issues.

However simple or complex your display requirement the RTK Mosaic Mimic System offers a display of any size and shape with options to include indicators, switches, pushbuttons, meters, recorders and alarm systems whilst retaining the facility to upgrade easily and economically.

A range of tile sizes, colours and standard symbols allows systems to be developed to meet the exact requirements either from the customer generated CAD drawing or our own designs



Technical Specification

Flexibility

Three standard tile sizes are available: 24 x 24mm, 48 x 48mm And 48 x 24mm these can be used in any combination to construct a mosaic mimic in any size and shape to suit all applications.



Supporting Grid

Moulded box section and aluminium Strengthening bars construct a firm Foundation for the snap-in tiles.

Tiles Colours

Standard tiles are moulded in light Gray to RAL7035 but systems can also be available in anthracite to RAL7016, light ivory to RAL1015 or Black to RAL9005.

Anti Glare

The use of lightly textured tiles provides a glare free display with excellent clarity even in high ambient light conditions.

Symbol tiles

Over 2000 tile types have already been developed to represent the most commonly found applications for example suction pumps, re circulating pumps, valves, transformers, pipelines, conveyor belts, railway tracks, vats, boilers, storage tanks etc. Symbols are printed onto the tile face to allow ease of viewing.



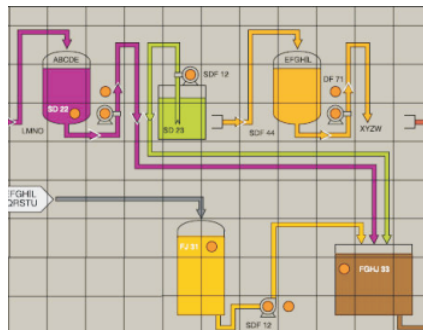
Simplified shipping

The use of the grid system also allows systems to be broken down into smaller sub sections to allow the graphic system to be easily transported and re-assembled on site by simply sliding the sub sections back together and replacing the locking clips. Once re assembled the individual sub sections joints will be transparent.

Tile Types

Tiles are manufactured from polycarbonate, and have the following key properties

- Difficult to ignite
- Self extinguishing
- UV resistant
- Flame retardant
- Non-toxic fumes if burnt
- Non fading pigments
- Excellent temperature stability
- Maximum operating temp. of 135°C
- Modular

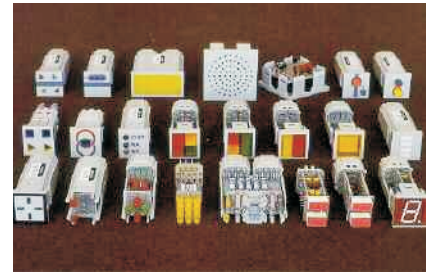


Engraved or Laser Etched Tiles

Individual tiles are supplied within the mimic with process specific text, this is supplied engraved or laser etched in the style and size to suit the overall mimic diagram.

Corner and Edging Tiles

All tiles on the corners or edges of mosaic mimic can be supplied with chamfers to provide an ergonomic finish, these can be easily re-located if the graphic needs to be modified or extended at a later date.



Instrument Tiles

A range of standard adapter bezels and tiles allows simple integration of third party instruments either by RTK or the end user.

Pushbuttons and Switches

Pushbuttons of varying types and sizes can be provided within the mosaic panel to suit specific customer requirements, they can be momentary or maintained ON/OFF type and equipped with a number of poles and be suitably rated as required. For electrical distribution mimics there are a range of heavy duty rotary and discrepancy switches available which are supplied fully integrated into the mimic display.

Signal Tiles

Tiles with built-in indication lamps are available in White, Yellow, Green, Red and Blue.

Each tile can be equipped with a single, dual, triple, or quad bulb array as required.

Customer Connections

Customer connections are normally wired to Weidmuller SAK 2.5 or DK4 Terminals of the rising clamp type capable of accepting up to 2.5mm² cable.

Terminals are mounted behind the mosaic panel on suitable rails and all wiring is colour coded and routed via cable trunking.

Alternative methods of connection, such as plug and sockets, are available on request.

Due to our policy of continuous product development, we reserve the right to amend specifications without notice.



RTK Instruments Limited
St James Business Park,
Knaresborough, North Yorkshire,
England. HG5 8PJ

Telephone: +44 (0)
Facsimile: +44 (0)
Web: www.rtkinstruments.com
Email: enquiry@rtkinstruments.com