

# Industrial Wireless Ethernet

## ELPRO 805U-E

### Ethernet connectivity without the wiring

The 805U-E is an ideal solution for Ethernet connections in process control and automation applications - PLC's, DCS, SCADA, data acquisition ... the 805U-E can handle multiple applications simultaneously.

### All in the same unit ...

Maximum flexibility, while saving expensive wiring costs. Each module can be configured as a

- Access Point
- Client/Station
- Bridge
- Router
- Repeater

- 10/100 BaseT Ethernet, wireless data up to 77 Kbits/sec
- ELPRO's proven Industrial Strength 869MHz 500mW radio technology

### Long and short range applications ...

- range 5km, license-free - repeater functionality increases wireless range even further
- excellent penetration in congested industrial environments - over 500 metres through buildings, factory walls and steelwork.

### Security, reliability, redundancy ...

- multiple layers of error-detection and correction
- automatic changeover of Access Point if the wireless link fails
- military-grade AES security encryption of wireless data
- 802.1d Spanning Tree functionality

### Firewall protection and efficient wireless management ...

- secure Firewall protection
- message filtering at MAC address level

### Serial server interfaces ...

- two serial interfaces, RS232 and RS485
- Modbus serial to Modbus TCP conversion
- discrete channel for status I/O, for failure status or external status transfer.

### Easy to use configuration and powerful diagnostics ...

- configuration and diagnostics via web-browser
- remote configuration and diagnostics via the wireless link.

### Lifetime Warranty & first-class technical support

ELPRO's industry-first **Lifetime Warranty** with 24 hour telephone technical support means you can use the 805U-E with confidence.



# 805U-E Wireless Ethernet

## SPECIFICATIONS

### Ethernet

10/100 BaseT RJ45  
IEEE 802.3 compliant.  
Bridge/router functions work with all Ethernet protocols  
Embedded Protocols:  
TCP/IP, UDP ARP, PPP, ICMP, HTTP, FTP, TFTP, TELNET

### Serial

RS232 V.24 DCE 1.2 to 38.4 Kb/s  
RS485 1.2 to 38.4 Kb/s  
Serial server functionality, Modbus RTU to Modbus TCP conversion

### Discrete I/O

One I/O channel  
Input voltage-free contact / Output FET 30VDC 500mA

### Networking

Configurable as Access Point or Client, Bridge or Router  
Point-to-point, Point-to-multipoint, user configurable addressing  
Repeater functionality      MAC Filtering - whitelist or blacklist  
Serial gateway TELNET      Spanning Tree 802.1d

### Radio

Single channel, synthesised transceiver  
Frequency band 869.525 MHz 500 mW  
Receiver sensitivity -108 dBm @ 10-6 BER  
Data rates 7.2, 14.4, 38.4, 76.8 Kb/s or auto rate selection  
Protocol CSMA/CA with 32 bit CRC and auto-correction  
Radio range 5 km line-of-sight  
Range may be extended using repeater features  
SMA coaxial antenna connection

### Security

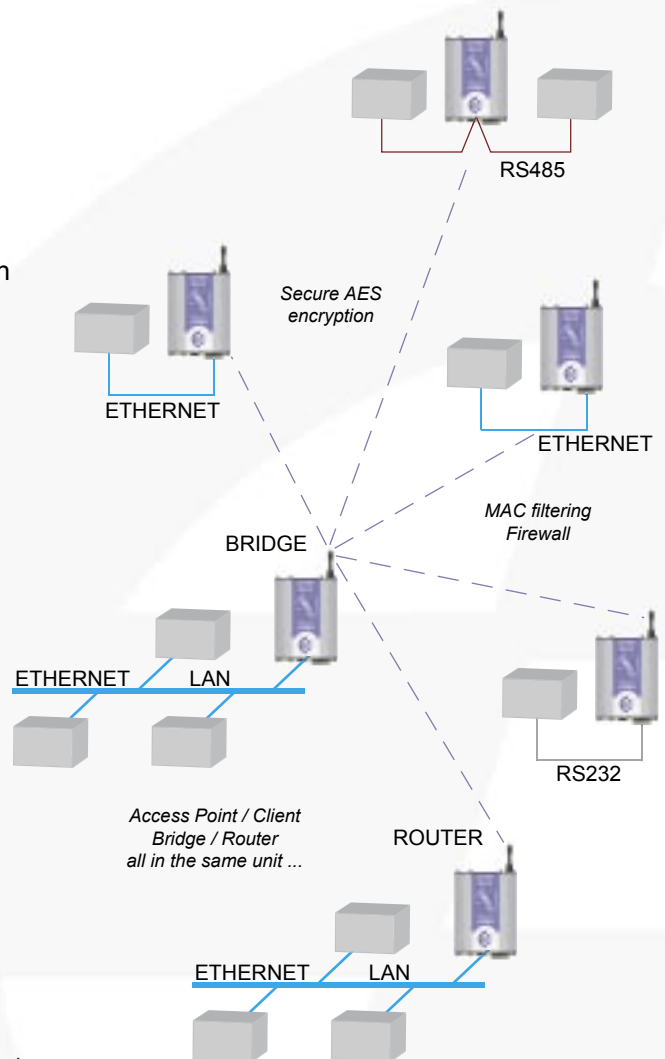
128 bit AES encryption or 64 bit proprietary encryption (configurable)  
Data modulation keying      MAC Address filtering  
Password protected configuration

### On-line Configuration and Diagnostics

HTTP with remote configuration via wireless link  
RF signal strength, Bit Error Rate, connection monitoring and statistics  
PPP Protocol Access to diagnostics

### General

Temperature -40 to +60 degC  
Humidity 99% non-condensing  
Power Supply 10 – 30VDC  
Current Normal 280mA (12V), 150mA (24V)  
                  Transmit 500mA (12V), 300mA (24V)  
Case, heavy duty painted aluminum, DIN rail mounting  
Size 4.5 x 5.5 x 1.2 in. / 114 x 140 x 30 mm  
Weight < 0.8 lb / 0.4 kg  
Indicators: Power/OK, Radio Rx and Tx, Radio Link, LAN Link/Activity,  
                  Serial Activity, Digital I/O, LAN 10/100Mbit Link  
Approvals EN 300 220, EN 301 489



**Australia** Ph: +61 7 3352 4533  
**Europe** Ph: +44 1295 72 4270  
**USA/Canada** Ph: (866) 713 4409  
**Brazil** Ph: +55 31 3849 3100

Email: sales@elprotech.com  
URL: [www.elprotech.com](http://www.elprotech.com)