

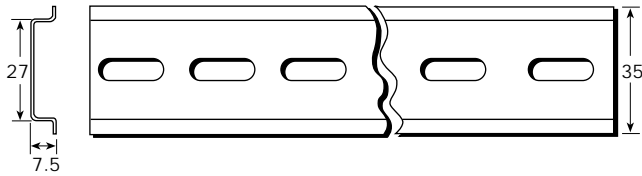
MTL7000 SERIES EARTH RAIL, TAGGING AND POWER ACCESSORIES

MOUNTING/EARTHING ACCESSORIES

MTL7000 Series barriers mount easily and quickly onto standard DIN rail which also acts as the intrinsically safe earth.

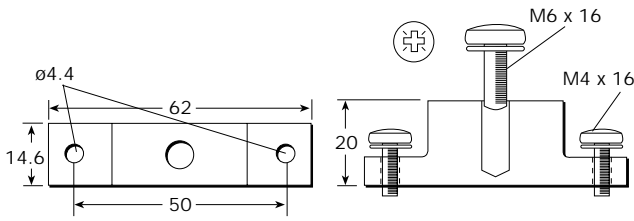
THR2 standard DIN rail THR7000 plated rail

Specially nickel-plated T-section (35 x 7.5mm) DIN rail for use in potentially corrosive atmospheres. Supplied in 1m lengths



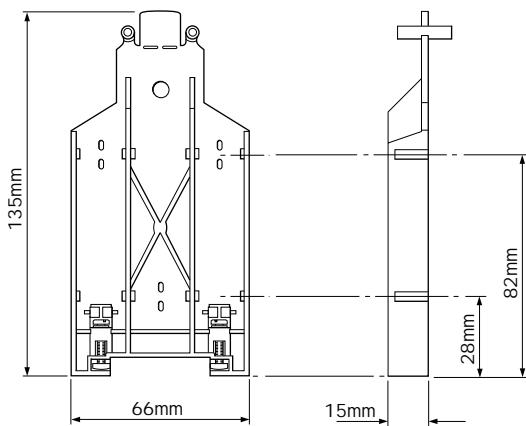
ISP7000 insulating spacers

Attached to the base of a DIN rail at either end or at intervals (depending upon DIN-rail length) to isolate the IS earth from a structural earth.



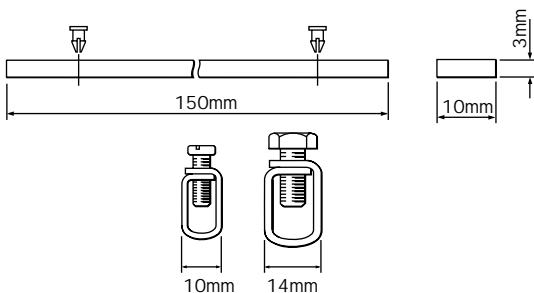
IMB57 Insulating mounting block

One required at each end of a tagging strip/earth rail. Suitable for low-profile (7.5mm) and high-profile (15mm) symmetrical DIN rail.



ERB57S Earth-rail bracket, straight

Nickel-plated; supplied with two push fasteners, one 14mm earth-rail clamp and one 10mm earth clamp for cables $\leq 16\text{mm}^2$.



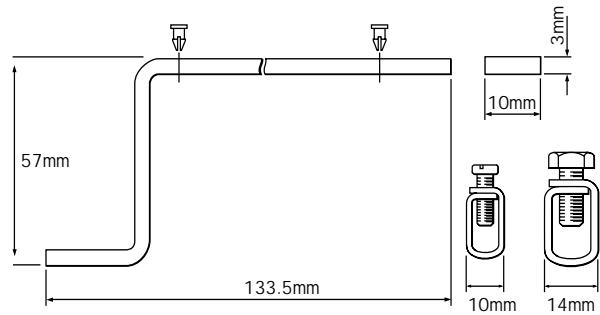
Notes: ERB57S is the preferred choice of earth-rail bracket. It may be fitted in either of two positions on insulating mounting block IMB57; usually in the upper slot for use with MTL5000 Series isolators, in the lower for use with MTL7000 Series Barriers.

However, to allow access to the mounting screws, the straight earth-rail bracket ERB57S can be inserted in the lower slot only after insulating mounting blocks IMB57 are clamped to the DIN rail. This may not be possible if, for example, trunking is fitted.

In this case, fit offset earth-rail bracket ERB57O (see below) in the upper slot: the mounting blocks can then be fitted in a restricted space with this bracket already fitted.

ERB57O Earth-rail bracket, offset

Nickel-plated; supplied with two push fasteners, one 14mm earth-rail clamp and one 9 mm earth clamp for cables $\leq 16\text{mm}^2$.



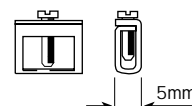
ERL7 earth rail

Nickel plated 3 x 10mm rail supplied in 1m lengths which can be cut to size.



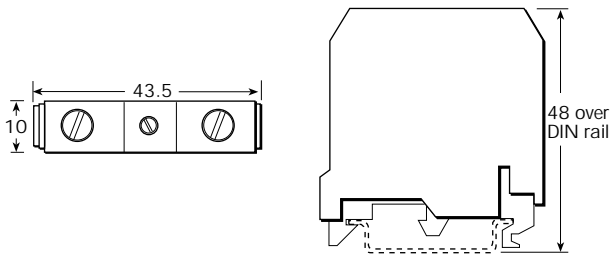
ETM7 earth terminal

For terminating cable screens and OV earth returns and securing spare cores to the earth rail. A maximum of one ETM7 per barrier can be accommodated.



ETL7000 earth terminal

Provides connection for routing the IS earth from the DIN rail to an appropriate plant earth. Maximum cable cross-section is 10mm². Two recommended per discrete length of DIN rail. See instruction manual INM7000 for more details



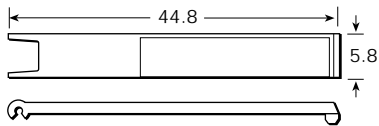
TAGGING ACCESSORIES

Two methods of tagging are available which can be used separately or together:

1) Individual barrier identification

BRI7000 barrier identifiers

BRI7000 barrier identifiers are supplied with one label and mount on the top of individual barriers to identify barrier details. Use with BIL7000 or BIL7000L barrier identification labels.



BIL7000 barrier identification labels

Supplied as tractor feed sheets, for pre-printing by user. 120 (peel off) labels per sheet.

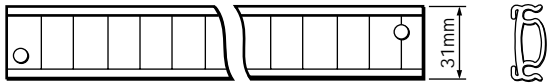
BIL7000L barrier identification labels

Supplied as A4 sheets of 126 (peel off) labels suitable for laser printing by user.

2) Tagging strip method

TAG57 Tagging strip, 1m length

Cut to size. Supplied with reversible tagging strip label suitable for either MTL5000 or MTL7000 Series module spacing.



TGL57 Tagging strip labels, set of 10 × 0.5m

Spares replacement, for use with TAG57 tagging strip. Labels are reversible – one side for MTL5000, the other for MTL7000.

POWER ACCESSORIES

RFA7050 replaceable fuse pack

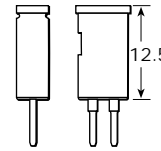
Spare secondary 50mA fuses, blue, for MTL7100 sub-series barriers, supplied in packs of 5

RFA7100 replaceable fuse pack

Spare secondary 100mA fuses, green, for MTL7106, supplied in packs of 5

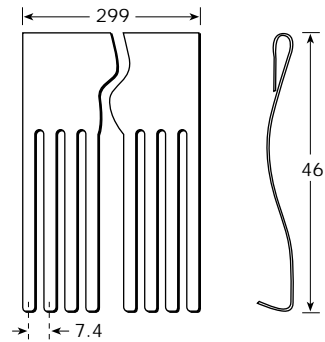
RLA7000 removable links

Spare 'latch-out' links for MTL7200 sub-series barriers, purple, supplied in packs of 5



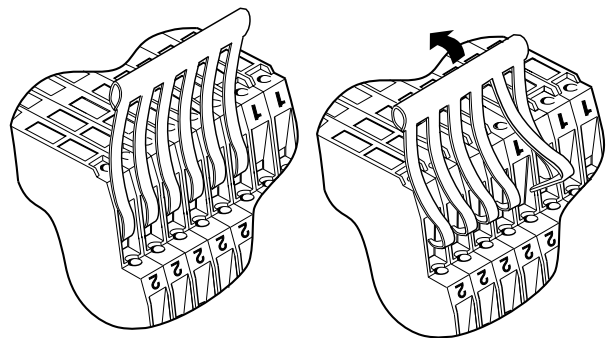
PWC7000 power comb

Feeds a 24V dc supply to a maximum of 40 barriers from an MTL7991 power feed module or an MTL7099/7299 dummy barrier (see A below). The comb and its teeth are shaped so that by deflecting the comb, (see B below) barriers may be inserted or removed without having to disturb the remaining connections. It can be sub-divided easily to feed smaller numbers of barriers.



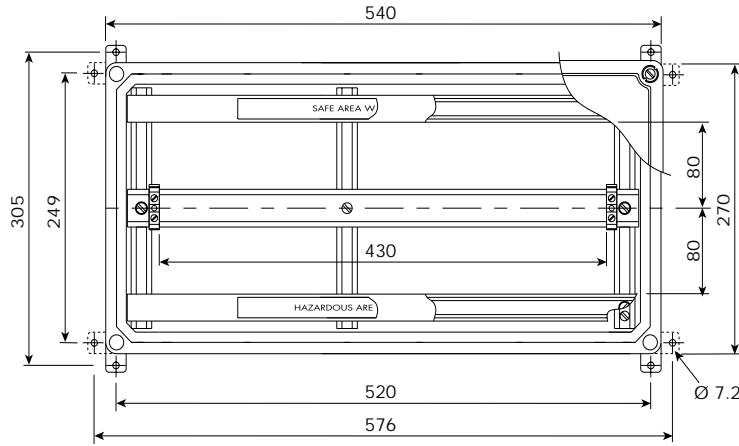
A

B

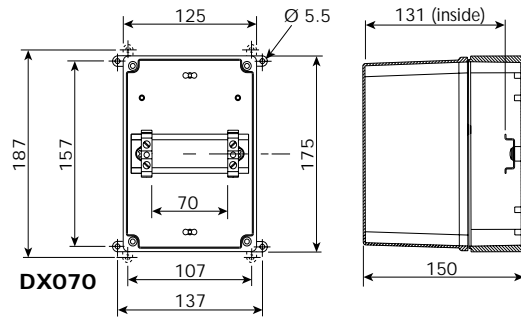


MTL7000 SERIES ENCLOSURES

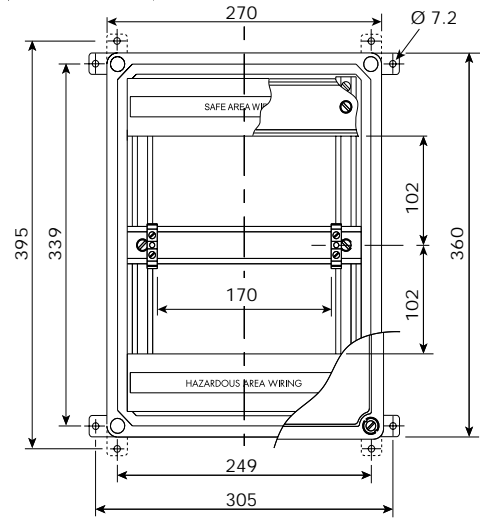
DIMENSIONS (in mm) AND MOUNTING



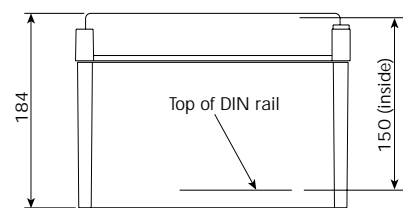
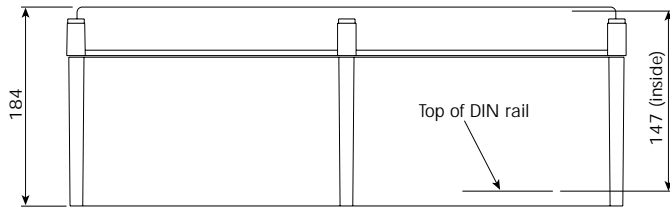
DX430



DX070



DX170



SPECIFICATION

Construction

- Glass reinforced polycarbonate base - DX070
- Glass reinforced polyester base - DX170, DX430
- Transparent polycarbonate lid

Protection

- Dust-tight and water-jet proof to IEC529:IP65

Lid fixing

- Captive fixing screws

Weight (excluding barriers/isolators) kg.

- DX070 0.8
- DX170 2.6
- DX430 4.1

Items provided

- DIN rail - fitted
 - ETL7000 Earth terminals (2 x) - fitted
 - "Take care IS" front adhesive label
 - Cable trunking (except DX070)
- Note: Barriers or isolators are not included.*

Mounting

- Wall fixing lugs provided. For mounting arrangement drawing refer to INM57ENC.

Tagging and earth rail

- Accommodates MTL7000 Series accessories.

Permitted location

- Safe area
- FM and CSA Div. 2, Class I (gases)
- Not** Div. 2, Class II (dust ignition proof)

Approximate capacities (on DIN rail between earth terminal

	MTL7000 barriers	
DX070	9	(5)*
DX170	22	(18)*
DX430	58	(54)*

* Use these figures when mounting brackets for tagging/earth are included.

Ambient temperature limits

- Dependent on units fitted. See instruction manual INM57ENC.