

# 防爆構造電気機械器具型式検定合格証

申請者	東京都港区赤坂八丁目11番37号 クーパー・インダストリーズ・ジャパン株式会社	
製造者	Great Marlings, Butterfield, Luton, LU2 8DL United Kingdom Eaton Electric Limited	
品名	電源モジュール	
型式の名称	G e c m a P S U M o d u l e D C	
防爆構造の種類	安全増防爆構造 (e b) 樹脂充填防爆構造 (m b) 本質安全防爆構造 (i b)	
対象ガス又は蒸気の爆発等級及び発火度	I I C T 4 G b	
防爆記号	E x e b m b i b I I C T 4 G b	
適用基準	工場電気設備防爆指針 (国際整合技術指針) JN1OSH-TR-46-1, 6:2015 及び 5, 7:2018 ルーチン試験 (QAR) 適用	
定格	定格電圧 DC 18 - 36 V 定格電流 5.5 A 非本安回路許容電圧 AC 250 V 50/60 Hz 出力電圧 DC 22 V 最大出力電圧 DC 28 V 最大出力電流 4 A  周囲温度 -30℃ ~ +60℃	
使用条件	1. 周囲温度が50℃を超える場合は、定格90℃以上のケーブルを使用すること。 2. ケーブルグラウンドの近傍でケーブルに追加の引留機能をもたせること。	
型式検定合格番号	第 TC 22825X 号	
	有効期間	型式検定者の所属及び氏名
	2022年 9月27日から 2025年 9月26日まで	試験認証部 後藤 隆
	年 月 日から 年 月 日まで	
	年 月 日から 年 月 日まで	
	年 月 日から 年 月 日まで	

機械等検定規則による型式検定に合格したことを証明する。

2022年 9月27日

型式検定実施者 公益社団法人 産業安全技術協会 会長

ルーチン試験について

2022年9月27日

公益社団法人 産業安全技術協会

ルーチン試験の対象品：

受付番号 Ex17942 号（2022年9月16日）／合格番号 TC22825X 号（2022年9月27日）

本型式検定合格品は、ルーチン試験が適用されます。新規に型式検定に合格してから輸入する合格品すべてを対象とする有効な品質審査レポート(QAR)を更新検定申請する際に資料として添付してください。QAR が添付されていないと、更新申請できません。QAR が更新されずに失効した場合、輸入したすべての合格品について適切にルーチン試験を実施したかどうか調査の対象となる場合がございますので、ご留意願います。更新申請しない場合においても、監督行政又は機械等登録型式検定機関からQAR の提示を求められる場合がございますので、併せてご留意願います。

ルーチン試験に関して、ご不明な点がございましたら、検定部までお問い合わせ願います。

以上

添付図面一覧表

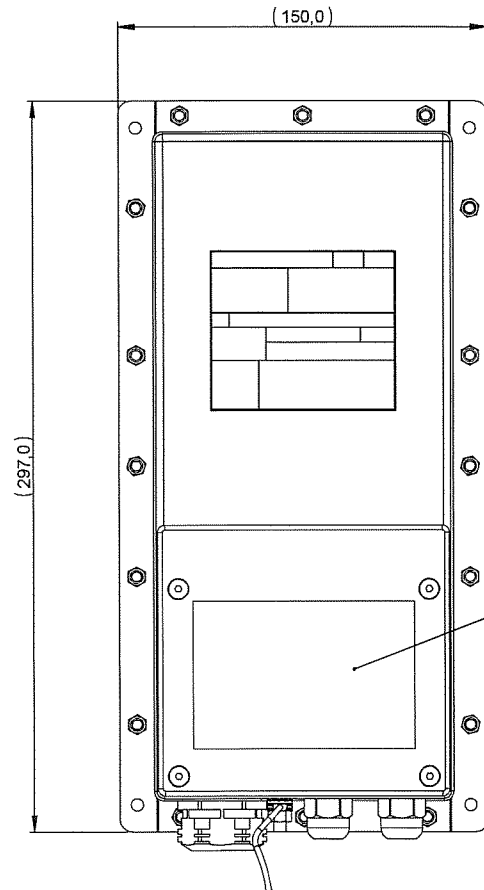
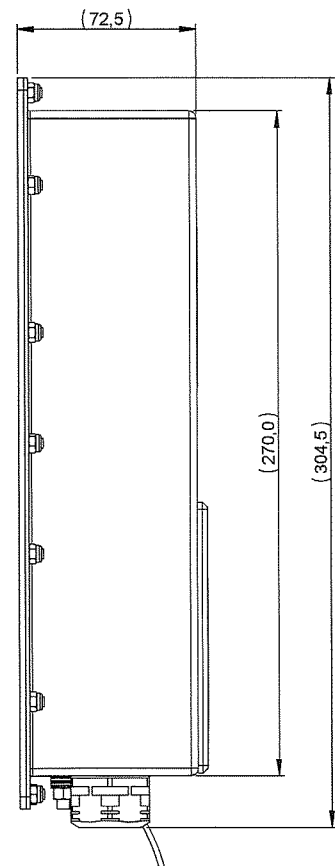
順番号	図面名称	図面番号	備考
1	GENERAL ARRANGEMENT DC-DC PSU (1)	CI6811-624-1	
2	GENERAL ARRANGEMENT DC-DC PSU (2)	CI6811-624-2	
3	GENERAL ARRANGEMENT DC-DC PSU (3)	CI6811-624-3	
4	GENERAL ARRANGEMENT DC-DC PSU (4)	CI6811-624-4	
5	+24VDC Active Voltage Barrier Board – Title Page	10-500480-1	
6	+24.0VDC Active Voltage Barrier (Part A)	10-500480-2	
7	+24VDC Active Voltage Barrier (Part B)	10-500480-3	
8	FAB AND DRILL DRAWING +24VDC ACTIVE VOLTAGE BARRIER	11-500480-1	
9	+24VDC ACTIVE VOLTAGE BARRIER (1)	11-500480-2	
10	+24VDC ACTIVE VOLTAGE BARRIER (2)	11-500480-3	
11	+24VDC ACTIVE VOLTAGE BARRIER (3)	11-500480-4	
12	+24VDC ACTIVE VOLTAGE BARRIER (4)	11-500480-5	
13	+24VDC ACTIVE VOLTAGE BARRIER (5)	11-500480-6	
14	+24VDC ACTIVE VOLTAGE BARRIER (6)	11-500480-7	
15	+24VDC ACTIVE VOLTAGE BARRIER (7)	11-500480-8	
16	+24VDC ACTIVE VOLTAGE BARRIER (8)	11-500480-9	
17	+24VDC ACTIVE VOLTAGE BARRIER (9)	11-500480-10	
18	+24VDC ACTIVE VOLTAGE BARRIER (10)	11-500480-11	
19	+24VDC ACTIVE VOLTAGE BARRIER (11)	11-500480-12	
20	+24VDC ACTIVE VOLTAGE BARRIER (12)	11-500480-13	
21	GECMA RT DC PSU, MTL6811 TRACK LAYOUT	CI6811-622	
22	GECMA DC PSU, MTL6811 COMP LAYOUT	CI6811-623	
23	24VDC Active Voltage Barrier Board	20-500480	
24	6811 PCB Critical Component List	CI6811-621	
25	CIRCUIT DIAGRAM FOR MTL6811	CI6811-620	
26	CABLE ASSEMBLY, THERMAL FUSE, PSU ASSY, GECMA PSU	CI6810-626	
27	CABLE ASSEMBLY, THERMAL FUSE, PSU ASSY 2, GECMA PSU	CI6810-627	
28	UT 10 & ZFKDS	TIIS002	
29	ADE1F2-M16	1F2 ISO M16	
30	ADE1F2-M25	1F2 ISO M25	
31	GECMA PSU MODULE DC Certification Label Details - SIRA	CI6811-625	
32	Gasket dimensions	TIIS001	
	以下余白		

TC22825X\_0\_添付図面は  
図面1/32~32/32

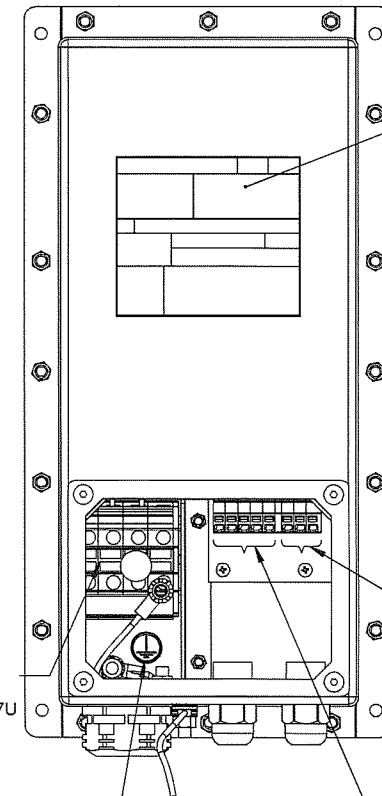
Third Angle Projection

Do Not Scale

Dimensions in mm



TB COVER & GASKET REMOVED FOR CLARITY



CERTIFICATION LABEL, PSU  
[e.g. GECMA P/N: 10104206]

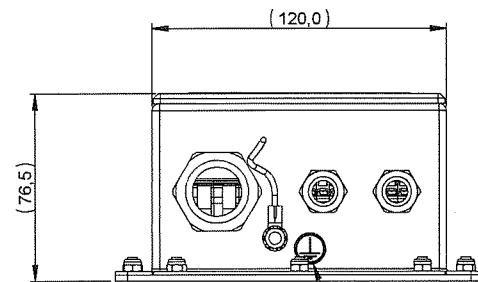
COMMS INPUT TERMINALS  
SPRING CAGE CONNECTION  
PHOENIX CONTACT TYPE ZFKDS SERIES  
WITH SPACER RZ-ZFKDS 2,5  
PTB 06 ATEX 1073 U & IEC Ex PTB 06.0096U

LABEL, ADHESIVE, WARNINGS  
[e.g. GECMA P/N: 10103418]

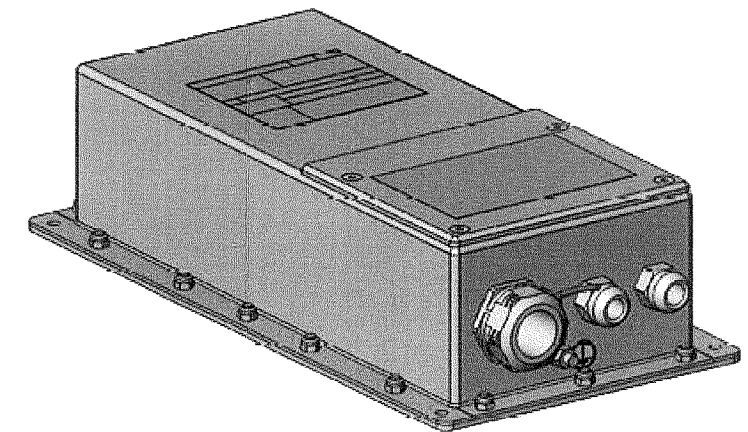
INPUT TERMINALS  
SCREW CONNECTION  
PHOENIX CONTACT DIN TERMINALS  
Part Nos. UT10 (L & N), UT10-PE (PE)  
Ex e DIN TERMINAL BLOCK  
KEMA 04ATEX2048 U & IECEx KEM 06.0027U

LABEL, ADHESIVE, IEC 417, EARTH  
[e.g. GECMA P/N: GEC13400931]

DISPLAY PANEL INPUT TERMINALS  
SPRING CAGE CONNECTION  
PHOENIX CONTACT TYPE ZFKDS SERIES  
PTB 06 ATEX 1073 U & IEC Ex PTB 06.0096U



LABEL, ADHESIVE, IEC 417, EARTH  
[e.g. GECMA P/N: GEC13400931]



- NOTES:
- METAL HOUSING:  
MATERIAL: ALUMINUM EN AW 5754-H22, 1.5mm NOMINAL THICKNESS  
(CONTAINS LESS THAN 7.5% Mg+Ti+Zr BY WEIGHT)  
PLATING: TRIVALENT CHROMIUM, CLASS 1A, CLEAR
  - a) For modules with a certification temperature down to -30°C  
ENCAPSULANT PROPERTIES  
MANUFACTURER: ISO-ELEKTRA ELECTROCHEMISCHE FABRIK GmbH, ELZE, GERMANY  
MODEL: ISO-CAST A 765 B COLD-CURING 2-COMPONENT POLYURETHANE RESIN  
COLOR: BEIGE (CURED)  
THERMAL CONDUCTIVITY: 0.6 W/K.m  
FILLERS/ADDITIVES: NONE  
MIX RATIO: 6:1 PBW (RESIN:HARDENER)  
CONTINUOUS MAXIMUM OPERATIONAL TEMPERATURE: 140°C (LONG-TERM), 210°C (SHORT-TERM)  
CONTINUOUS MINIMUM OPERATIONAL TEMPERATURE: -50°C
  - b) For modules with a certification temperature down to -40°C  
ENCAPSULANT PROPERTIES  
MANUFACTURER: EMERSON & CUMING, A DIVISION OF LOCTITE-HENKEL, ROCKY HILL, CT USA  
MODEL: STYCAST 5954, 2-COMPONENT SILICONE ENCAPSULANT SYSTEM  
COLOR: BRICK RED (CURED)  
THERMAL CONDUCTIVITY: 1.15 W/K.m  
FILLERS/ADDITIVES: ALUMINUM OXIDE IN BOTH PART A & PART B  
MIX RATIO: 1:1 BY WEIGHT  
CONTINUOUS MAXIMUM OPERATIONAL TEMPERATURE: +260 C  
CONTINUOUS MINIMUM OPERATIONAL TEMPERATURE: -65 C
  - ALL MATERIALS, PROCESSES & FINISHES SHALL BE COMPLIANT WITH THE RESTRICTION OF HAZARDOUS SUBSTANCES (ROHS) DIRECTIVE 2011/65/EU AND SHALL BE LEAD FREE
  - PSU MODULE SHOWN IN DRAWING SHALL COMPLY WITH ASSEMBLY PRACTICES REQUIRED IN THE CURRENT VERSION OF IEC/EN 60079-18 FOR 'mb' ASSEMBLIES
  - NON-CRITICAL DIMENSIONS ARE PROVIDED FOR INFORMATION ONLY AND ARE DENOTED BY (). THESE DIMENSIONS ARE SUBJECT TO CHANGE WITHOUT THE NEED TO NOTIFY THE APPROVAL BODY AS LONG AS THEY DON'T AFFECT THE CRITICAL MINIMUM DIMENSION REQUIREMENTS.

Approved on behalf of Sira Certification Service by ihulse 15/04/2019

Ex Scheduled Drawing DO NOT modify without prior approval from Sira Certification Service

2.0	NOTE 2 b) ADDED	27.02.2019	MW
REV.	DESCRIPTION	DATE	DRN BY

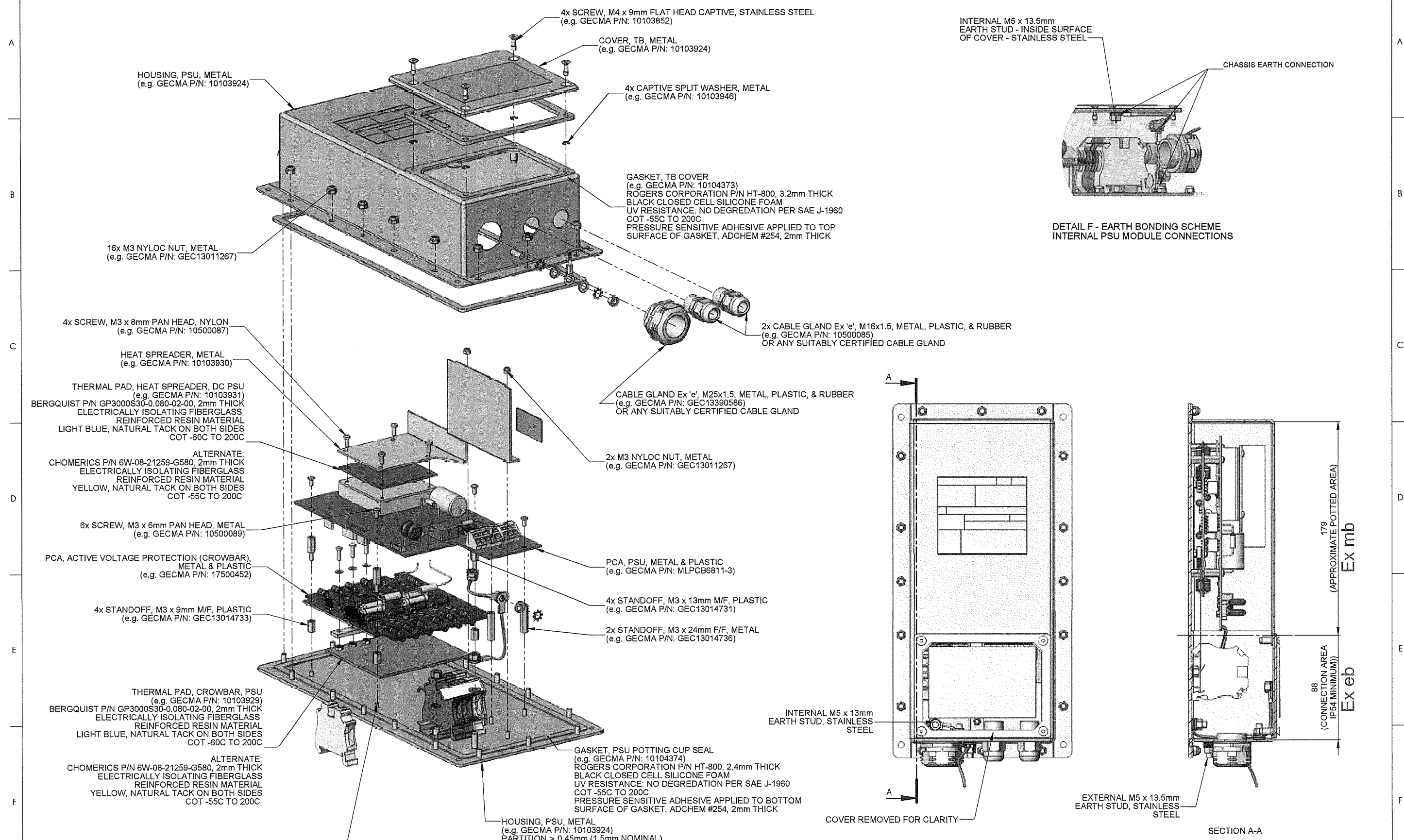
Material	This drawing and any information or descriptive material set out on it are the confidential and copyright property of Eaton Electric LTD, and MUST NOT BE DISCLOSED, COPIED, LOANED in whole or part or used for any purpose without the written permission of Eaton Electric LTD.	 Eaton Electric Ltd. Great Marlings, Butterfield, Luton, Bedfordshire, England, LU2 8DL Telephone: +44 (0)1582 723633 Web: www.mtl-inst.com Email: mtlenquiry@eaton.com	Title	Drg No.	Iss.	
Scale 1:2			Weight 2.31kg	GENERAL ARRANGEMENT DC-DC PSU(1)	CI6811-624-1	2.0
Sheet 1 of 4					SAP- No.	

SolidWorks 1 2 3 4 5 6 7 8 A2

Third Angle Projection

Do Not Scale

Dimensions in mm

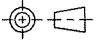


Approved on behalf of Sira Certification Service by ihulse 15/04/2019

Ex Scheduled Drawing DO NOT modify without prior approval from Sira Certification Service

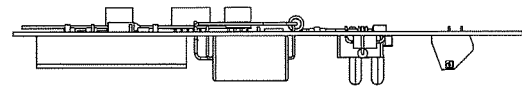
Material		This drawing and any information or descriptive material set out on it are the confidential and copyright property of Eaton Electric LTD. and MUST NOT BE DISCLOSED, COPIED, LOANED in whole or part or used for any purpose without the written permission of Eaton Electric LTD.	Eaton Electric Ltd. Great Marlings, Butterfield, Luton, Bedfordshire, England, LU2 8DL Telephone: +44 (0)1582 723633 Web: www.mtl-inst.com Email: mtlenquiry@eaton.com	Title	Drg No.	Iss.
Scale 1:2	Weight 2.31kg			GENERAL ARRANGEMENT DC-DC PSU (2)	CI6811-624 -2	2.0
Sheet 2 of 4				SAP- No.		

1 2 3 4 5 6 7 8

Third Angle Projection 

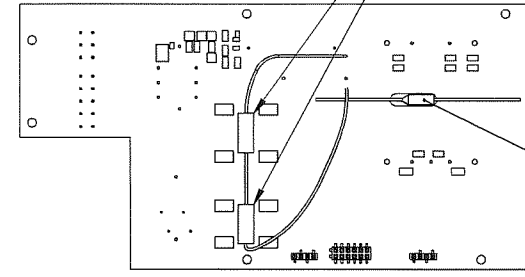
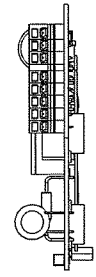
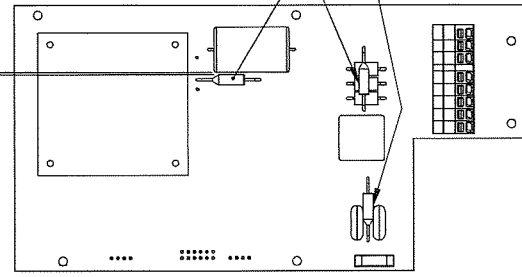
Do Not Scale

Dimensions in mm



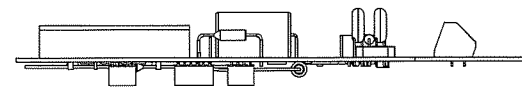
>1mm GAP REQUIRED BETWEEN C4 & FS3

NON-RESETTABLE THERMAL CUTOUT, QTY 3  
 CANTHERM P/N: DF110S OR DONG-YANG ELECTRONICS P/N: DF110S  
 UL/cUL FILE No. E117626, 250VAC, 10A RATED  
 TRIP TEMPERATURE +110°C +0°C/-5°C  
 FUSES MUST BE >1mm FROM OTHER ELECTRONIC COMPONENTS

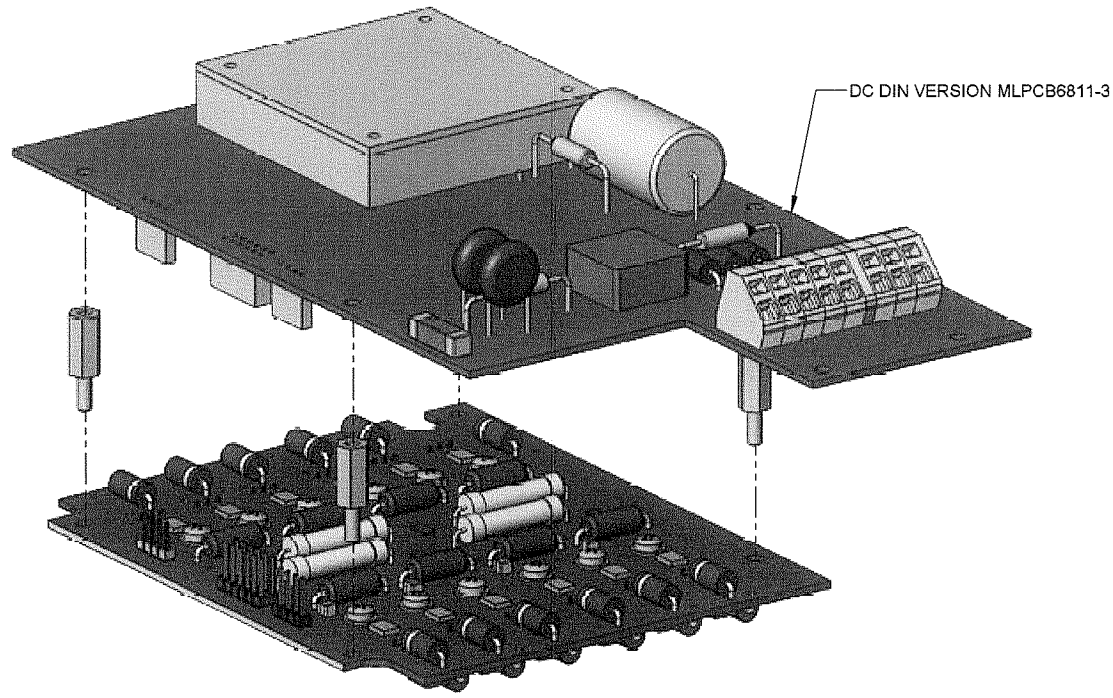


NON-RESETTABLE THERMAL CUTOUT, QTY 2  
 CANTHERM P/N: DF110S OR DONG-YANG ELECTRONICS P/N: DF110S  
 UL/cUL FILE No. E117626, 250VAC, 10A RATED  
 TRIP TEMPERATURE +110°C +0°C/-5°C  
 CABLE ASSEMBLY REMAINS IN <30V Ex ib SECTION  
 AND SHALL BE SUPPLIED WITH A MINIMUM OF 1MM SOLID INSULATION

NON-RESETTABLE THERMAL CUTOUT, QTY 1  
 [e.g. GECMA PCB P/N: XXXXXX] CONTAINING  
 CANTHERM P/N: DF110S OR DONG-YANG ELECTRONICS P/N: DF110S  
 UL/cUL FILE No. E117626, 250VAC, 10A RATED  
 TRIP TEMPERATURE +110°C +0°C/-5°C

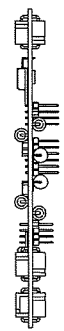
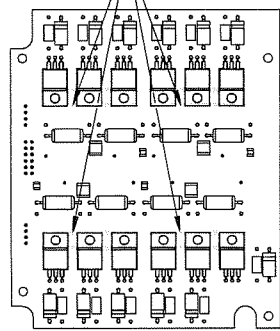


POWER SUPPLY PCA:

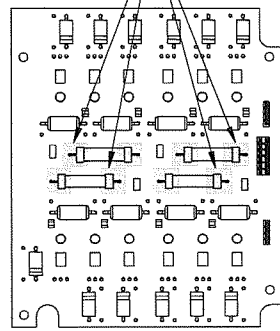


DC DIN VERSION MLPCB6811-3

SCR HEAT SPREADERS, METAL  
 AZONIX P/N: P17-102214




CROWBAR FUSE ENDCAPS  
 SEALED WITH RTV ADHESIVE  
 DOW CORNING 3145 OR SIMILAR  
 4 PLACES



ACTIVE VOLTAGE BARRIER CIRCUITS:

Approved on behalf of Sira Certification Service by ihulse 15/04/2019

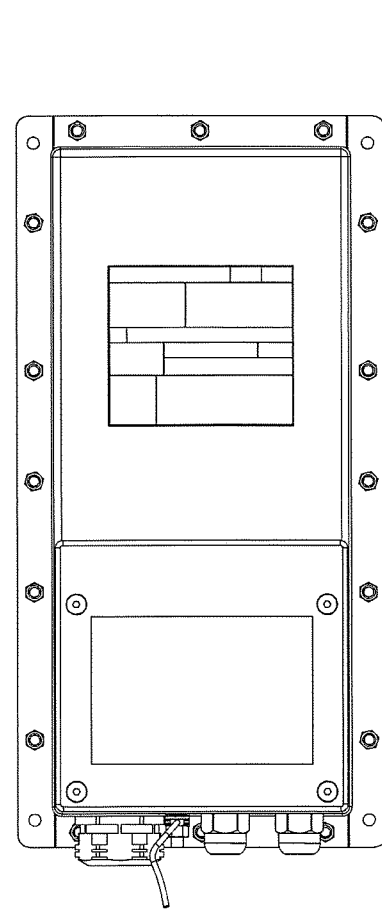
Ex Scheduled Drawing DO NOT modify without prior approval from Sira Certification Service

Material		This drawing and any information or descriptive material set out on it are the confidential and copyright property of Eaton Electric LTD, and MUST NOT BE DISCLOSED, COPIED, LOANED in whole or part or used for any purpose without the written permission of Eaton Electric LTD.  Eaton Electric Ltd, Great Marings, Butterfield, Luton, Bedfordshire, England, LU2 8DL Telephone: +44 (0)1582 723633 Web: www.mtl-inst.com Email: mtl-enquiry@eaton.com	Title	Drg No.	Iss.
Scale 1:2	Weight kg		GENERAL ARRANGEMENT DC-DC PSU(3)	CI6811-624-3	2.0
Sheet 3 of 4				SAP- No.	

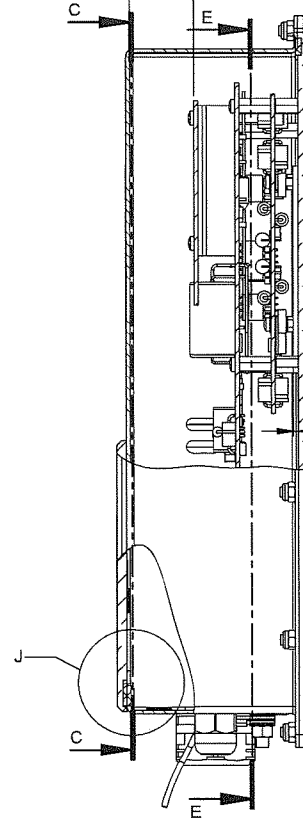
Third Angle Projection

Do Not Scale

Dimensions in mm



26,3 CLEARANCE THROUGH ENCAPSULATION



2,0 NOMINAL  
1,0 MINIMUM  
CLEARANCE THROUGH  
SOLID INSULATION  
(THERMAL INTERFACE MATERIAL)

INPUT POWER CONNECTION  
≥1.5mm<sup>2</sup> CROSS SECTIONAL AREA  
SOLDERED TO PCB (MLPCB6811-3)

11,8 NOMINAL  
3,0 MINIMUM  
CLEARANCE THROUGH  
ENCAPSULATION

4,3 NOMINAL  
3,0 MINIMUM  
CLEARANCE THROUGH  
ENCAPSULATION

4,3 NOMINAL  
3,0 MINIMUM  
CLEARANCE THROUGH  
ENCAPSULATION

179  
(ENCAPSULATION AREA)

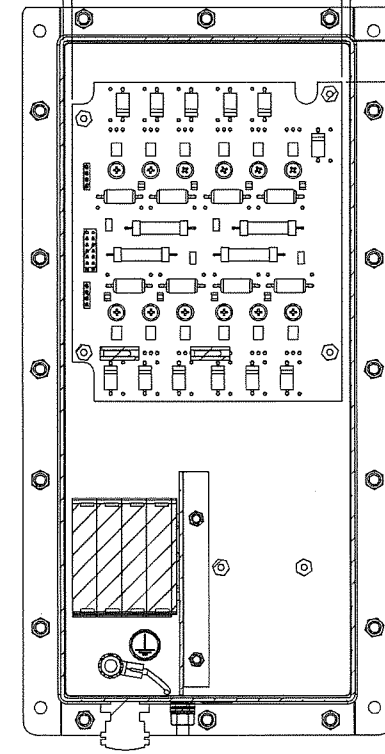
FREE SURFACE OF  
POTTING MATERIAL

SECTION C-C

3,6 NOMINAL  
3,0 MINIMUM  
CLEARANCE THROUGH  
ENCAPSULATION

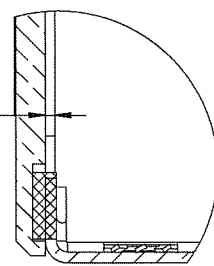
3,6 NOMINAL  
3,0 MINIMUM  
CLEARANCE THROUGH  
ENCAPSULATION

16,7 NOMINAL  
3,0 MINIMUM  
CLEARANCE THROUGH  
ENCAPSULATION



SECTION E-E


1,30 NOMINAL  
1,5 MAXIMUM SEPARATION  
PARTITION - LID INTERFACE



DETAIL J - EARTH PARTITION SEPARATION  
SCALE 3 : 2

Approved on behalf of Sira Certification Service by inulise 15/04/2019

Ex Scheduled Drawing DO NOT modify without prior approval from Sira Certification Service

Material		This drawing and any information or descriptive material set out on it are the confidential and copyright property of Eaton Electric LTD. and MUST NOT BE DISCLOSED, COPIED, LOANED in whole or part or used for any purpose without the written permission of Eaton Electric LTD.	 Powering Business Worldwide Eaton Electric Ltd. Great Marlings, Butterfield, Luton, Bedfordshire, England, LU2 8DL Telephone: +44 (0)1582 723633 Web: www.mtl-inst.com Email: mtlenquiry@eaton.com	Title		Drg No.	Iss.
Scale 1:2	Weight 2.31kg			GENERAL ARRANGEMENT DC-DC PSU (4)		CI6811-624-4	2.0
Sheet 4 of 4						SAP- No.	

# A0826 - Pathfinder Crowbar Board

Revision History			
Rev	Description	Date	Engineer
01	Preliminary Release.	7/26/2013	Hai Nguyen

## Table of Contents


Page 1: Title Page & Revision History  
 Page 2: +24VDC Active Voltage Barrier (Part A)  
 Page 3: +24VDC Active Voltage Barrier (Part B)

## Notes:

- A. See design and layout notes on schematic
- B. Unless Otherwise Specified:
  1. Resistance values are in Ohms, 1%
  2. Capacitance Values are in uF, X=% Y=V
  3. All voltages are DC
  4. Reference designators conform to ANSI Y32.2-1975
  5. Electronics symbols conform to ANSI/IEEE 91-1984
  6. See ANSI Y1.1-1972 for most abbreviations and acronyms

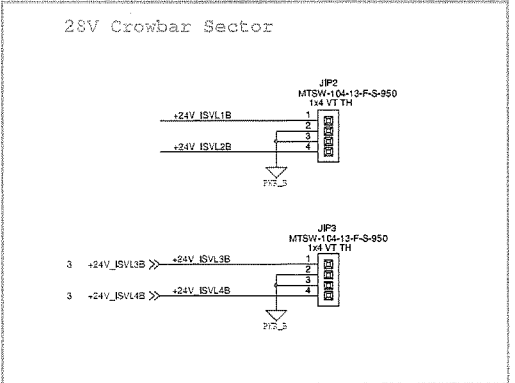
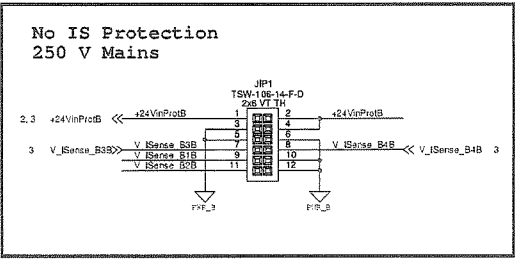
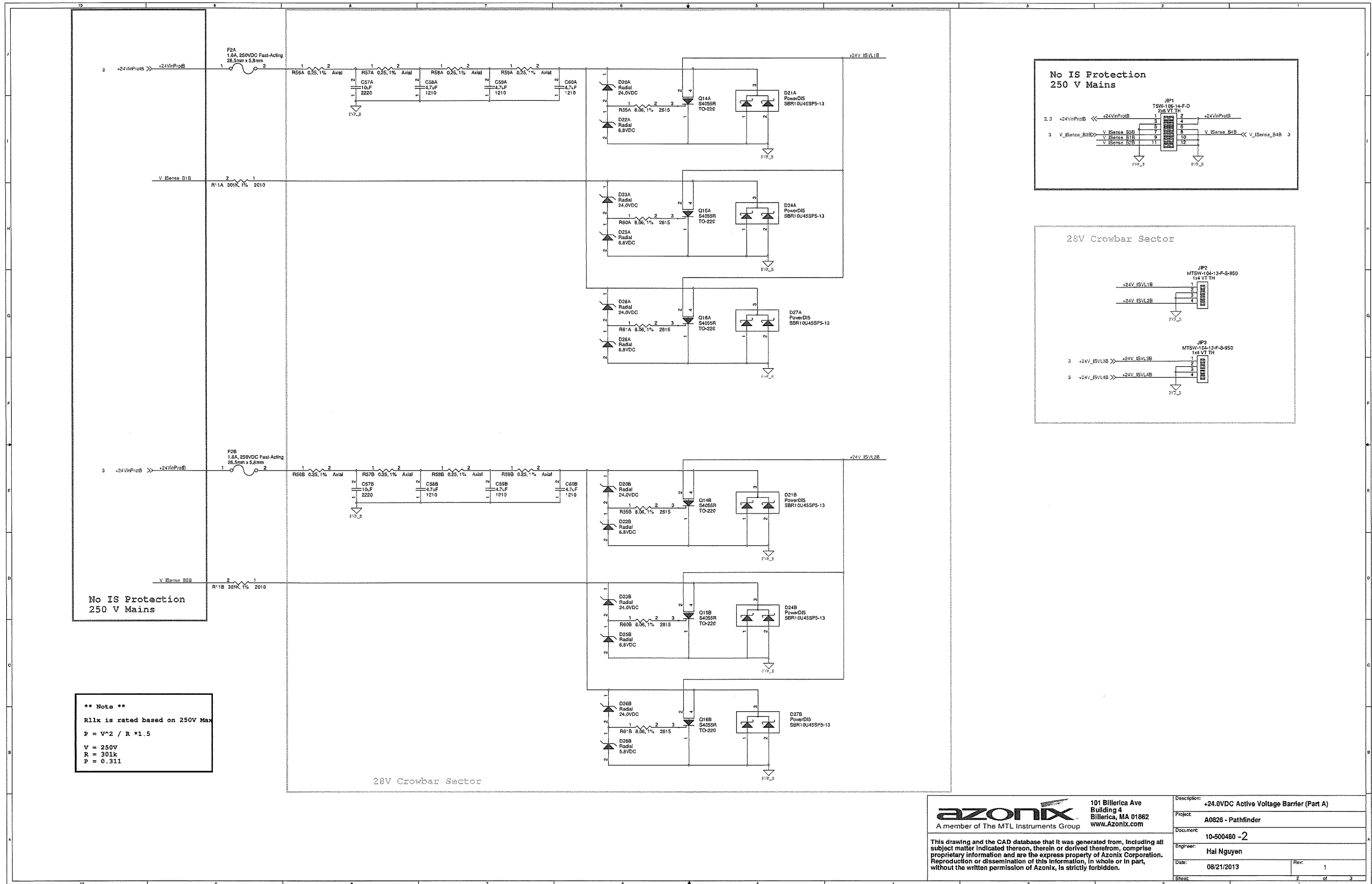
## Design Part Numbers

Schematic	10-500480
PCB Fabrication Drawing	11-500480
<del>Assembly Drawing</del>	<del>12-500480</del>
<del>PCB Outline/Rest Drawing</del>	<del>14-100210</del>
<del>Bill of Materials</del>	<del>20-500480</del>

 101 Billerica Ave Building 4 Billerica, MA 01862 www.Azonix.com A member of The MTL Instruments Group	Description: +24VDC Active Voltage Barrier Board - Title Page	
	Project: A0826 - Pathfinder	
This drawing and the CAD database that it was generated from, including all subject matter indicated thereon, therein or derived therefrom, comprise proprietary information and are the express property of Azonix Corporation. Reproduction or dissemination of this information, in whole or in part, without the written permission of Azonix, is strictly forbidden.	Document: 10-500480 -1	
	Engineer: Hai Nguyen	
	Date: 08/21/2013	Rev: 1
Sheet: 1 of 3		

Eaton Electric Limited





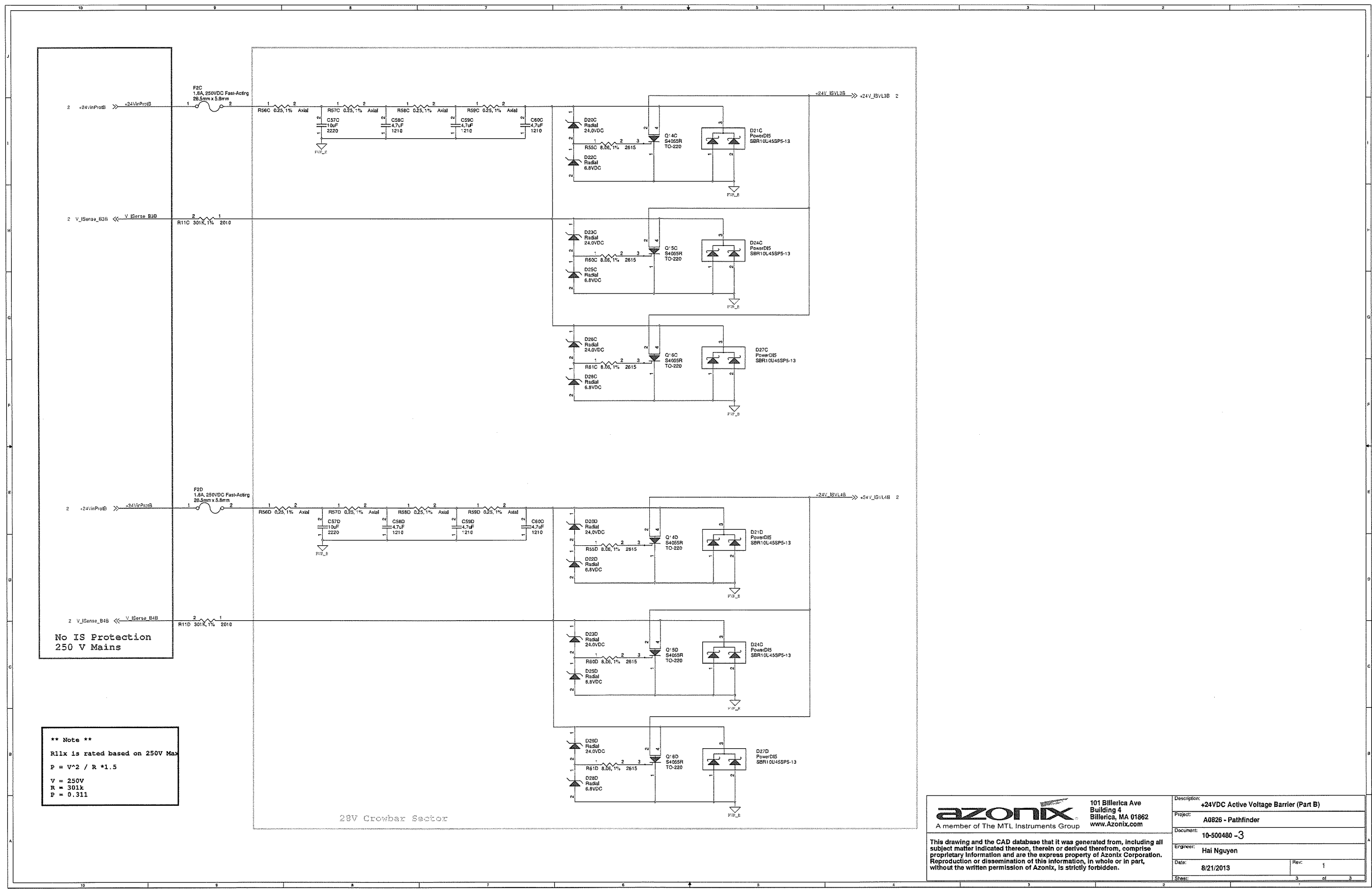
No IS Protection  
250 V Mains

**\*\* Note \*\***  
R11x is rated based on 250V Max  
 $P = V^2 / R * 1.5$   
V = 250V  
R = 301k  
P = 0.311

28V Crowbar Sector

<p>A member of The MTL Instruments Group</p>	<p>101 Billerica Ave Building 4 Billerica, MA 01862 www.Azonix.com</p>	<p>Description: +24.0VDC Active Voltage Barrier (Part A)</p>
		<p>Project: A0826 - Pathfinder</p>
<p>This drawing and the CAD database that it was generated from, including all subject matter indicated thereon, therein or derived therefrom, comprise proprietary information and are the express property of Azonix Corporation. Reproduction or dissemination of this information, in whole or in part, without the written permission of Azonix, is strictly forbidden.</p>		<p>Document: 10-500480 -2</p>
		<p>Engineer: Hai Nguyen</p>
		<p>Date: 08/21/2013 Rev: 1</p>
		<p>Sheet: 2 of 3</p>


Eaton Electric Limited



No IS Protection  
250 V Mains

**\*\* Note \*\***  
R11x is rated based on 250V Max  
 $P = V^2 / R * 1.5$   
V = 250V  
R = 301k  
P = 0.311

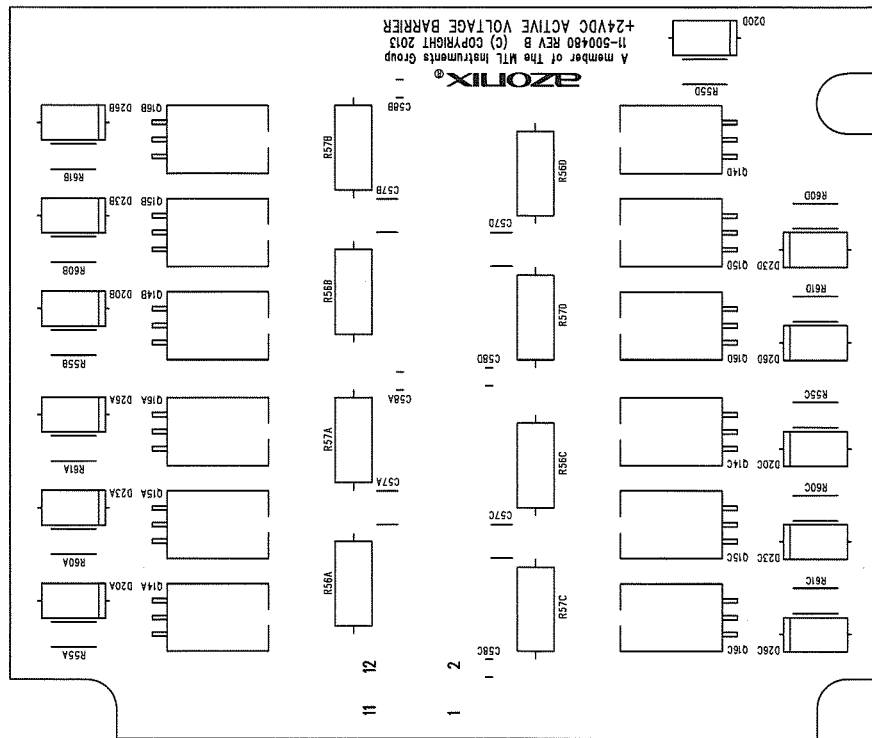
28V Crowbar Sector

 A member of The MTL Instruments Group	101 Billerica Ave Building 4 Billerica, MA 01862 www.Azonix.com	Description: +24VDC Active Voltage Barrier (Part B)
		Project: A0826 - Pathfinder
This drawing and the CAD database that it was generated from, including all subject matter indicated thereon, therein or derived therefrom, comprise proprietary information and are the express property of Azonix Corporation. Reproduction or dissemination of this information, in whole or in part, without the written permission of Azonix, is strictly forbidden.		Document: 10-500480 -3
		Engineer: Hai Nguyen
		Date: 8/21/2013
		Rev: 1
		Sheet: 3 of 3

Eaton Electric Limited

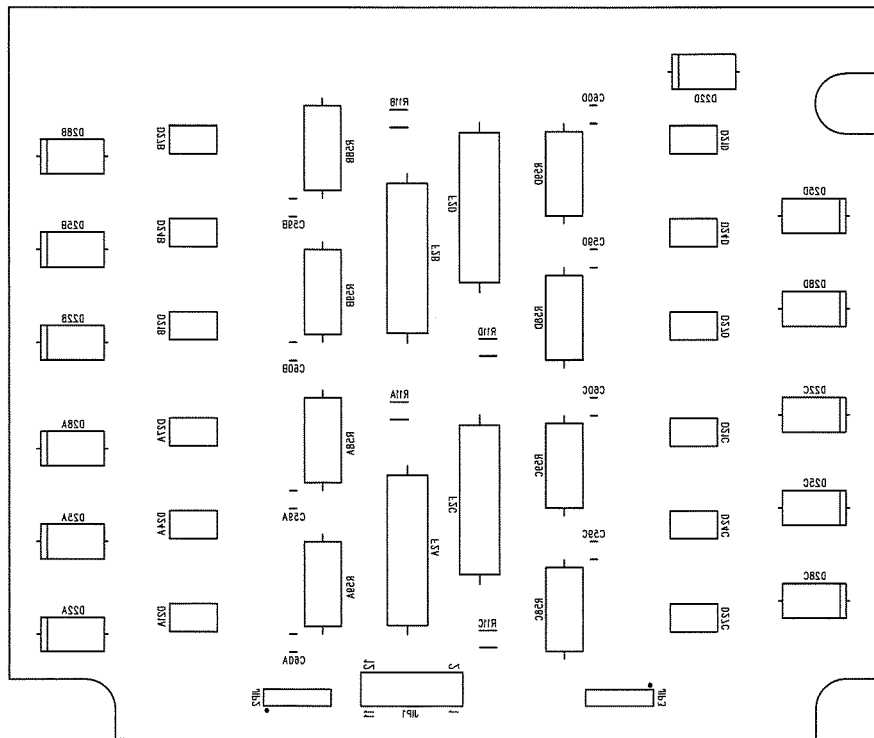


AZONIX CORP.	
PCB NO: 11-500480-2	REV: B
LAYOUT: WWW.CCDNH.COM	
BOARD TITLE: SILKSCREEN PRIMARY SIDE	
+24VDC ACTIVE VOLTAGE BARRIER(1)	
LAYER: SHEET 2 OF 13	



Eaton Electric Limited

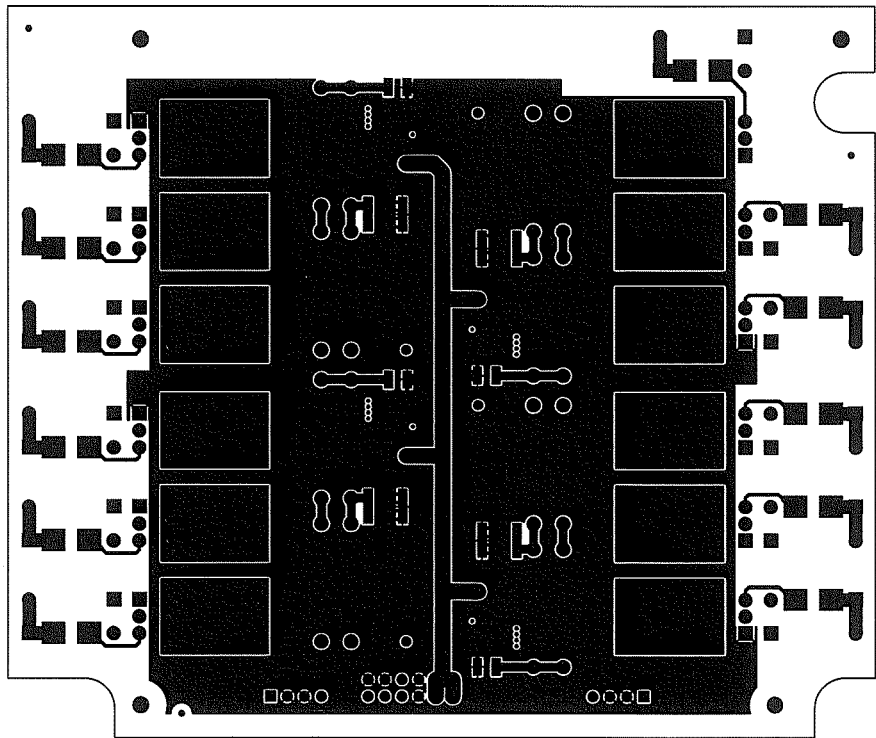
AZONIX CORP.	
PCB NO: 11-500480-3	REV: B
LAYOUT: WWW.CCDNH.COM	
BOARD TITLE: +24VDC ACTIVE VOLTAGE BARRIER(2)	
LAYER: SILKSCREEN SECONDARY SIDE	
SHEET 3 OF 13	



Eaton Electric Limited

10

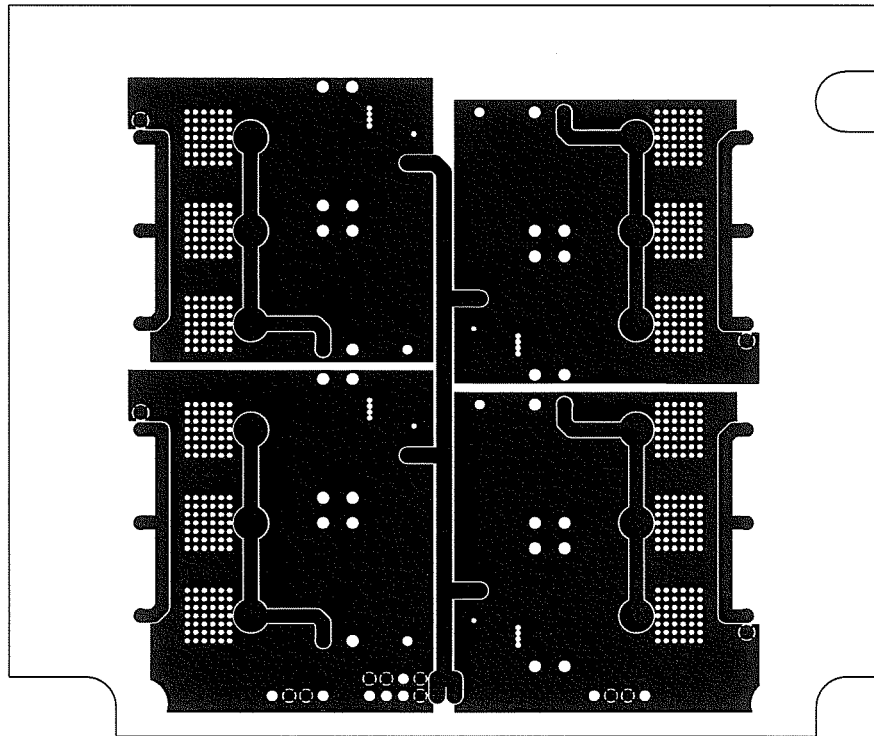
AZONIX CORP.	
PCB NO: 11-500480-4	REV: B
LAYOUT: WWW.CCDNH.COM	
BOARD TITLE: +24VDC ACTIVE VOLTAGE BARRIER(3)	
LAYER: LAYER 1 PRIMARY SIDE SHEET 4 OF 13	



Eaton Electric Limited

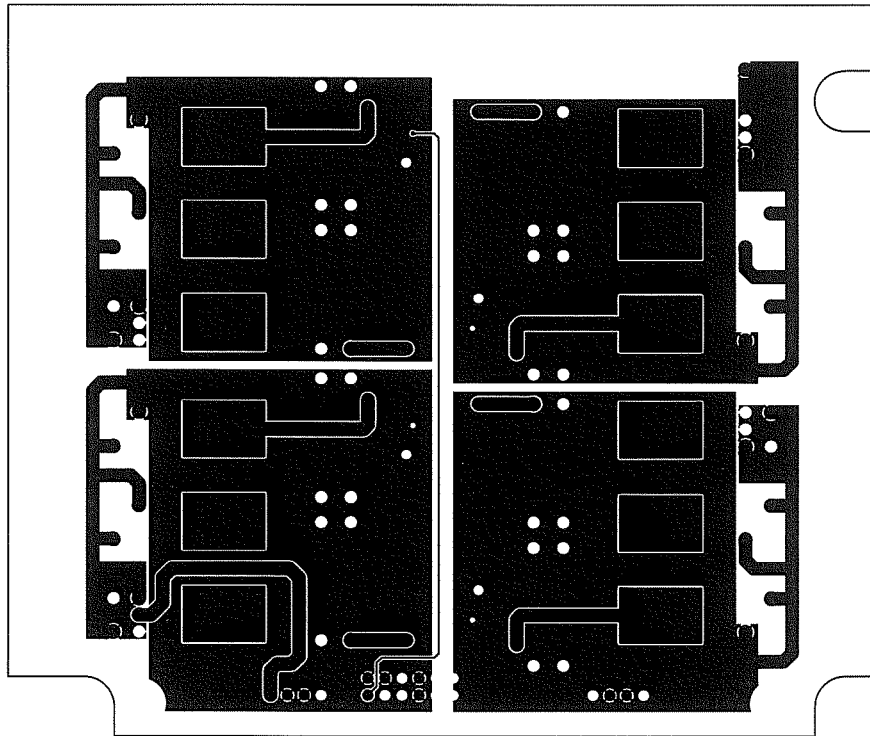
//

AZONIX CORP.	
PCB NO: 11-500480-5	REV: B
LAYOUT: WWW.CCDNH.COM	
BOARD TITLE: +24VDC ACTIVE VOLTAGE BARRIER(4)	
LAYER: LAYER 2 GROUND PLANE	
SHEET 5 OF 13	



Eaton Electric Limited

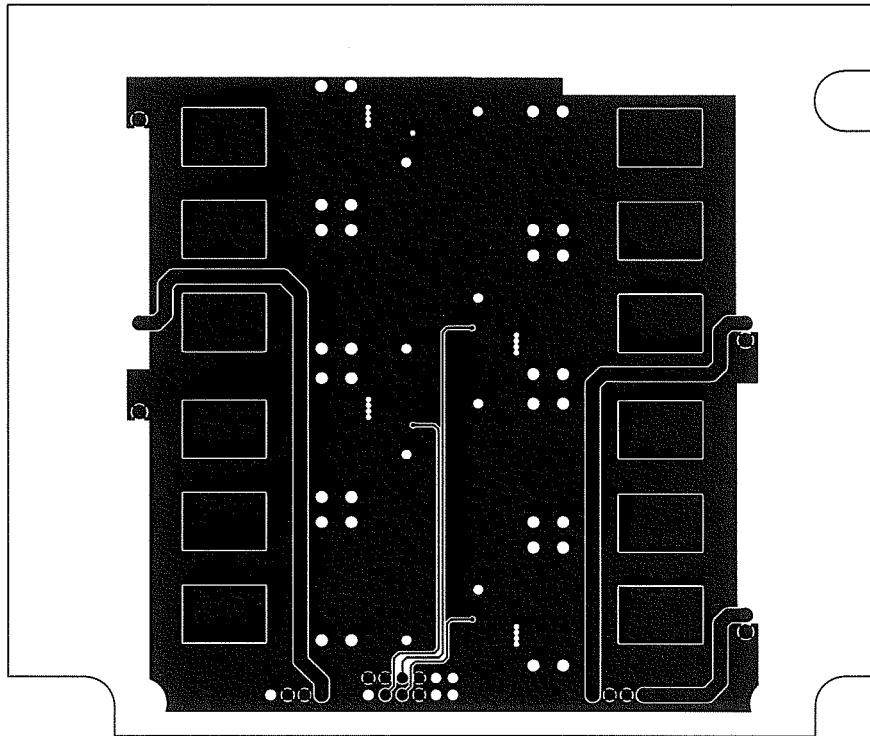
AZONIX CORP.	
PCB NO: 11-500480-6	REV: B
LAYOUT: WWW.CCDNH.COM	
BOARD TITLE: +24VDC ACTIVE VOLTAGE BARRIER(5)	LAYER: LAYER 3 SHEET 6 OF 13



Eaton Electric Limited

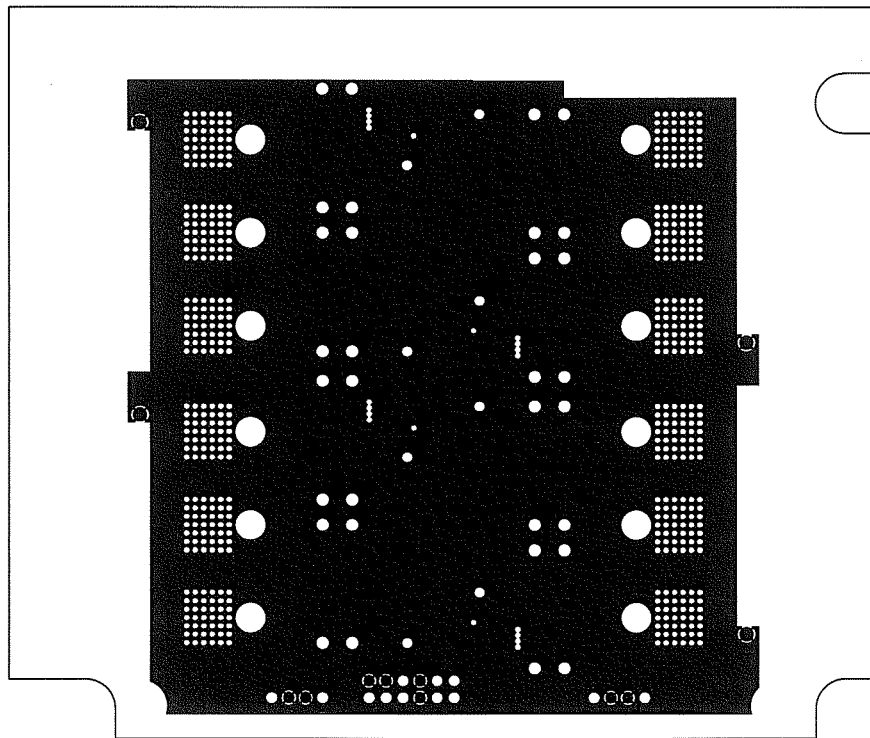


AZONIX CORP.	
PCB NO: 11-500480-7	REV: B
LAYOUT: WWW.CCDNH.COM	
BOARD TITLE: +24VDC ACTIVE VOLTAGE BARRIER(6)	
LAYER: LAYER 4	
SHEET 7 OF 13	



Eaton Electric Limited

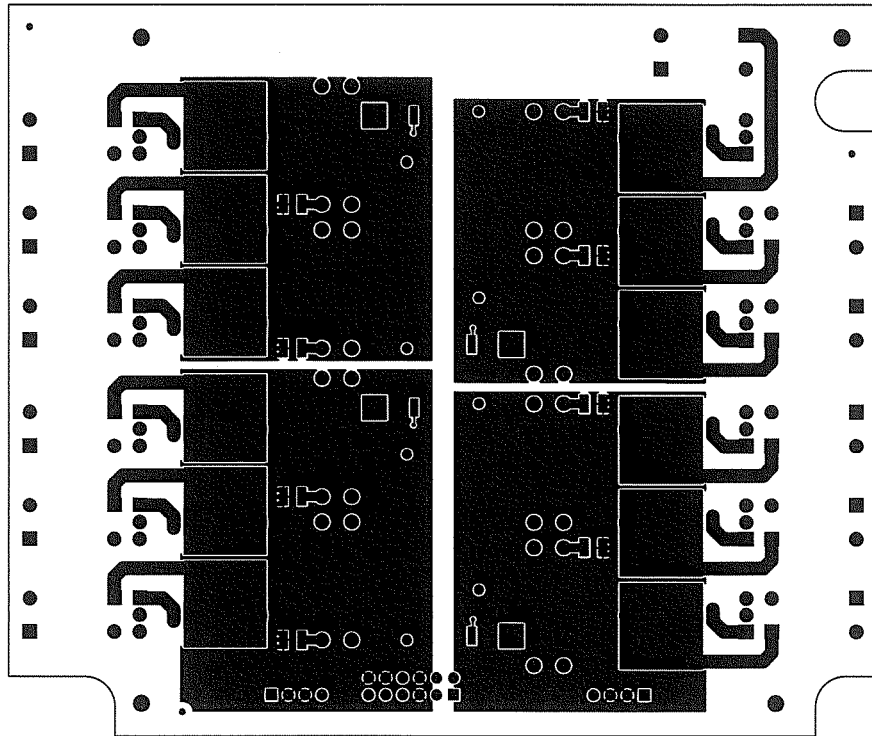
AZONIX CORP.	
PCB NO: 11-500480-8	(REV: B)
LAYOUT: WWW.CCDNH.COM	
BOARD TITLE: +24VDC ACTIVE VOLTAGE BARRIER(7)	
LAYER: LAYER 5 GROUND PLANE	
SHEET 8 OF 13	



Eaton Electric Limited

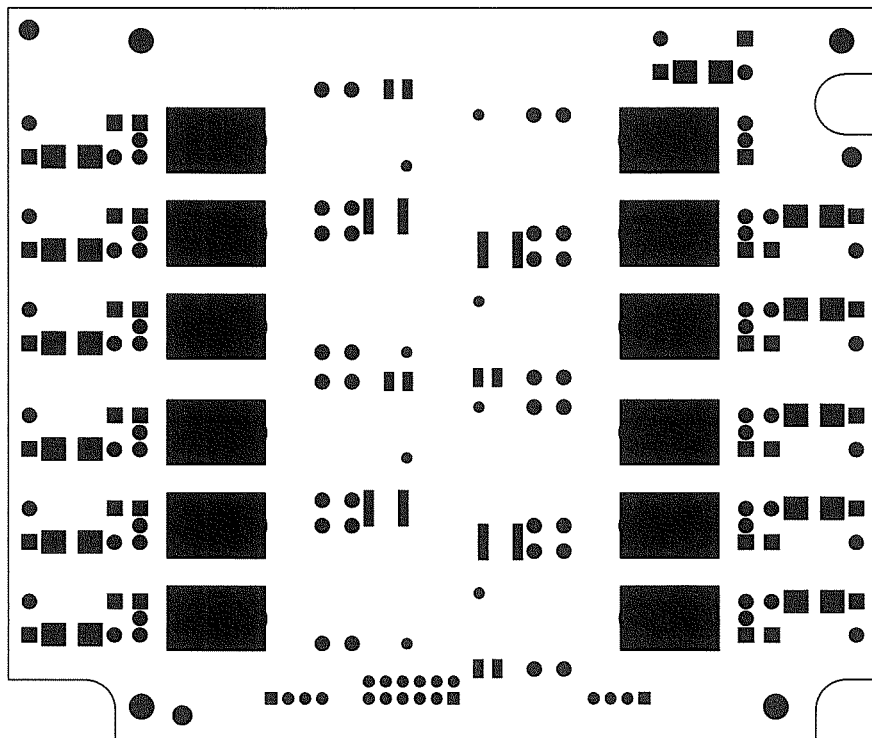
15

AZONIX CORP.	
PCB NO: 11-500480-9	REV: B
LAYOUT: WWW.CCDNH.COM	
BOARD TITLE: +24VDC ACTIVE VOLTAGE BARRIER(8)	
LAYER: LAYER 6 SECONDARY SIDE	
SHEET 9 OF 13	



Eaton Electric Limited

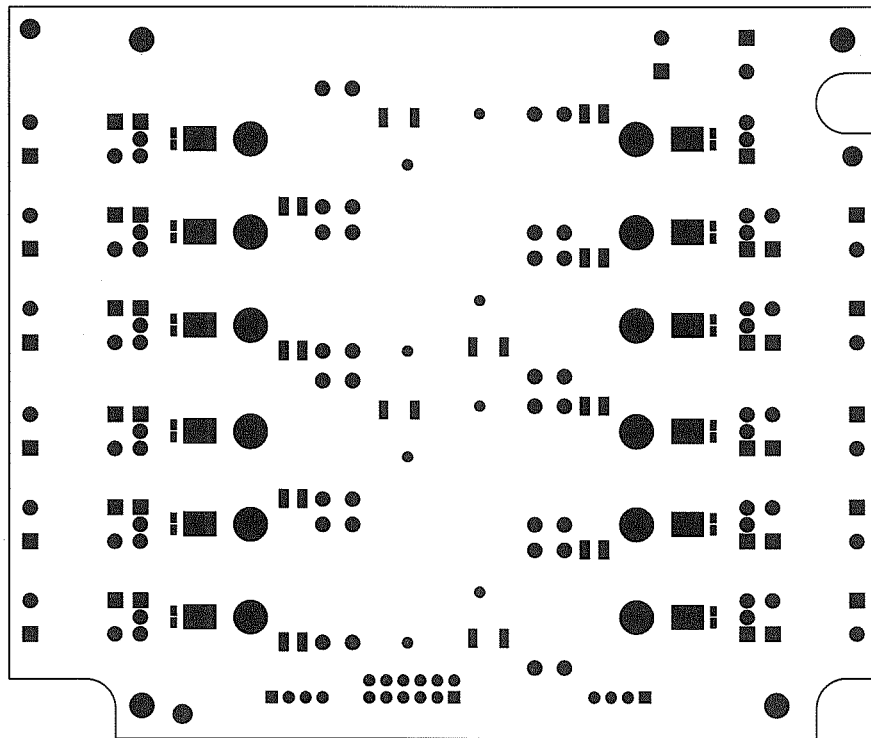
AZONIX CORP.	
PCB NO: 11-500480-10	REV: B
LAYOUT: WWW.CCDNH.COM	
BOARD TITLE: +24VDC ACTIVE VOLTAGE BARRIER(9)	
LAYER: SOLDER MASK PRIMARY SIDE	
SHEET 10 OF 13	



Eaton Electric Limited

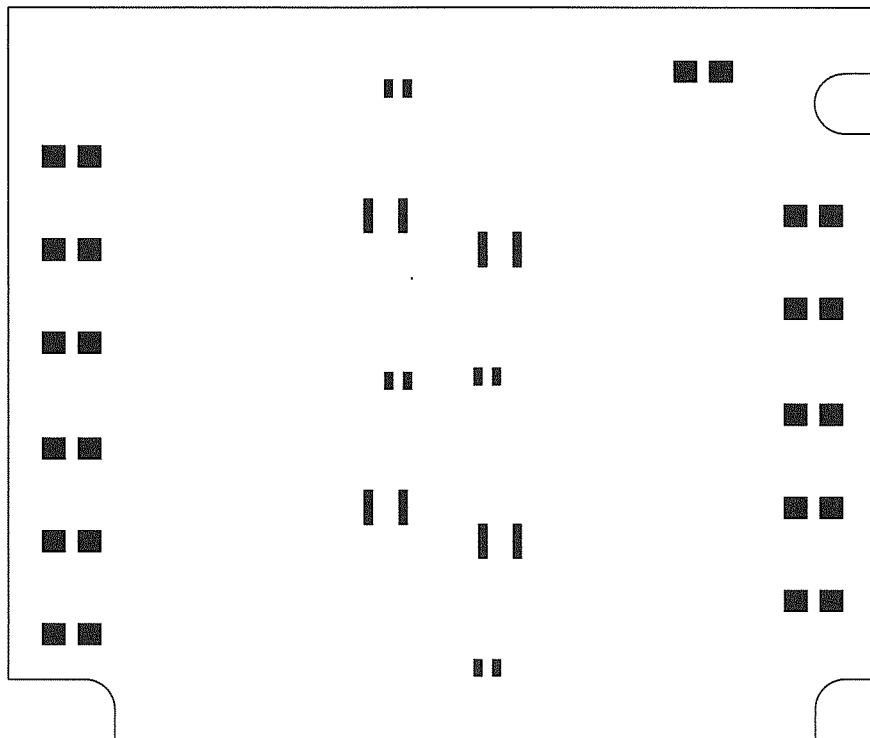
17

AZONIX CORP.	
PCB NO: 11-500480-11	REV: B
LAYOUT: WWW.CCDNH.COM	
LAYER: SOLDER MASK SECONDARY SIDE	
BOARD TITLE: +24VDC ACTIVE VOLTAGE BARRIER <sup>(1)</sup>	
SHEET 11 OF 13	



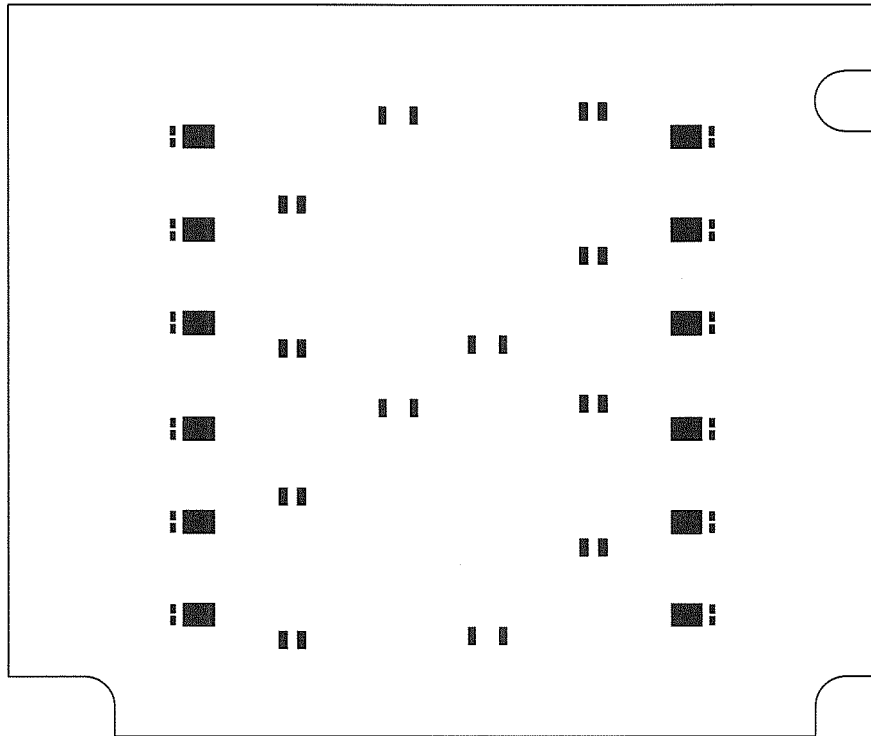
Eaton Electric Limited

AZONIX CORP.	
P/CB NO: 11-500480-12	REV: B
LAYOUT: WWW.CCDNH.COM	
BOARD TITLE: +24VDC ACTIVE VOLTAGE BARRIER(1)	LAYER: PASTE MASK PRIMARY SIDE
SHEET 12 OF 13	



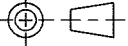
Eaton Electric Limited

AZONIX CORP.	
PCB NO: 11-500480 -13	REV: B
LAYOUT: WWW.CCDNH.COM	
BOARD TITLE: +24VDC ACTIVE VOLTAGE BARRIER(12)	
LAYER: PASTE MASK SECONDARY SIDE	
SHEET 13 OF 13	



Eaton Electric Limited

1 2 3 4 5 6 7 8

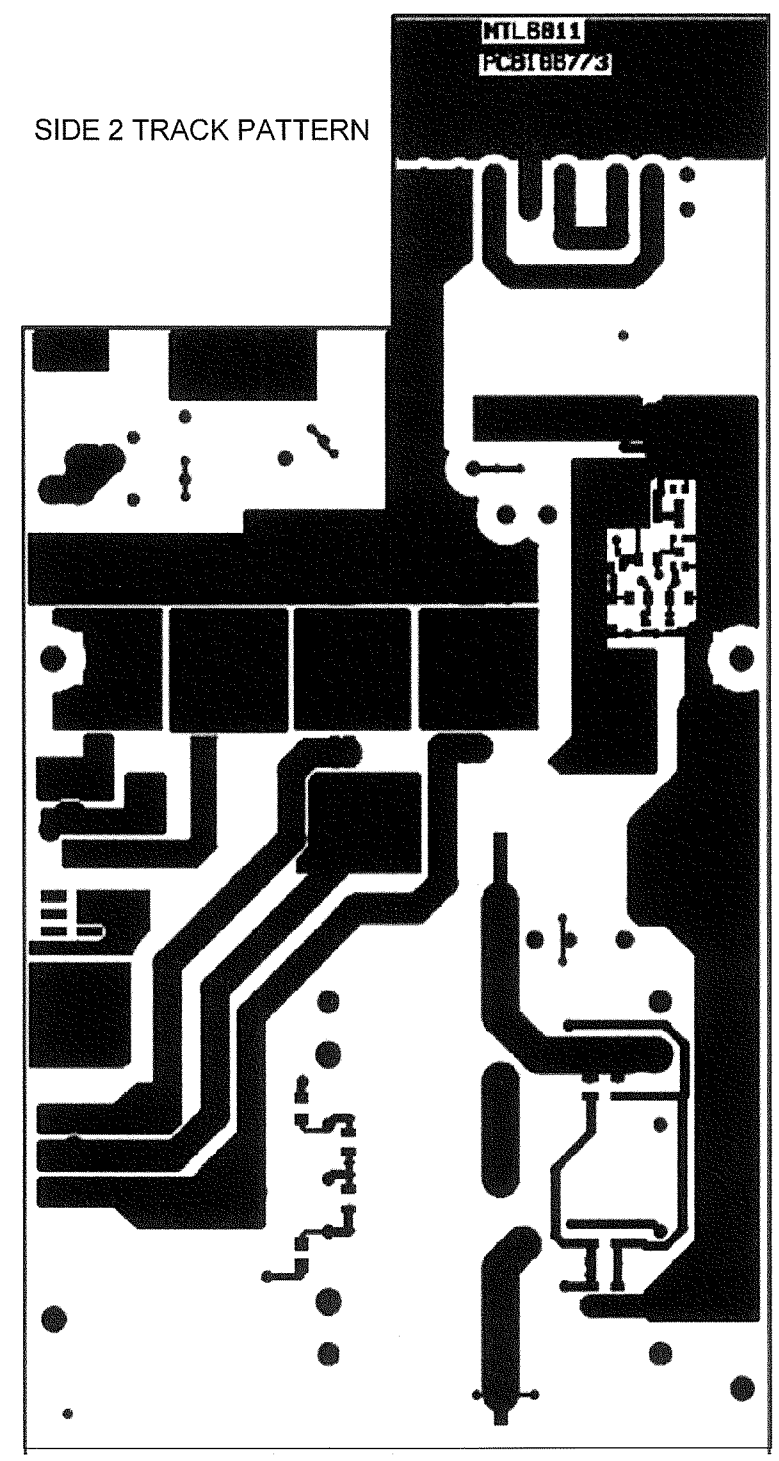
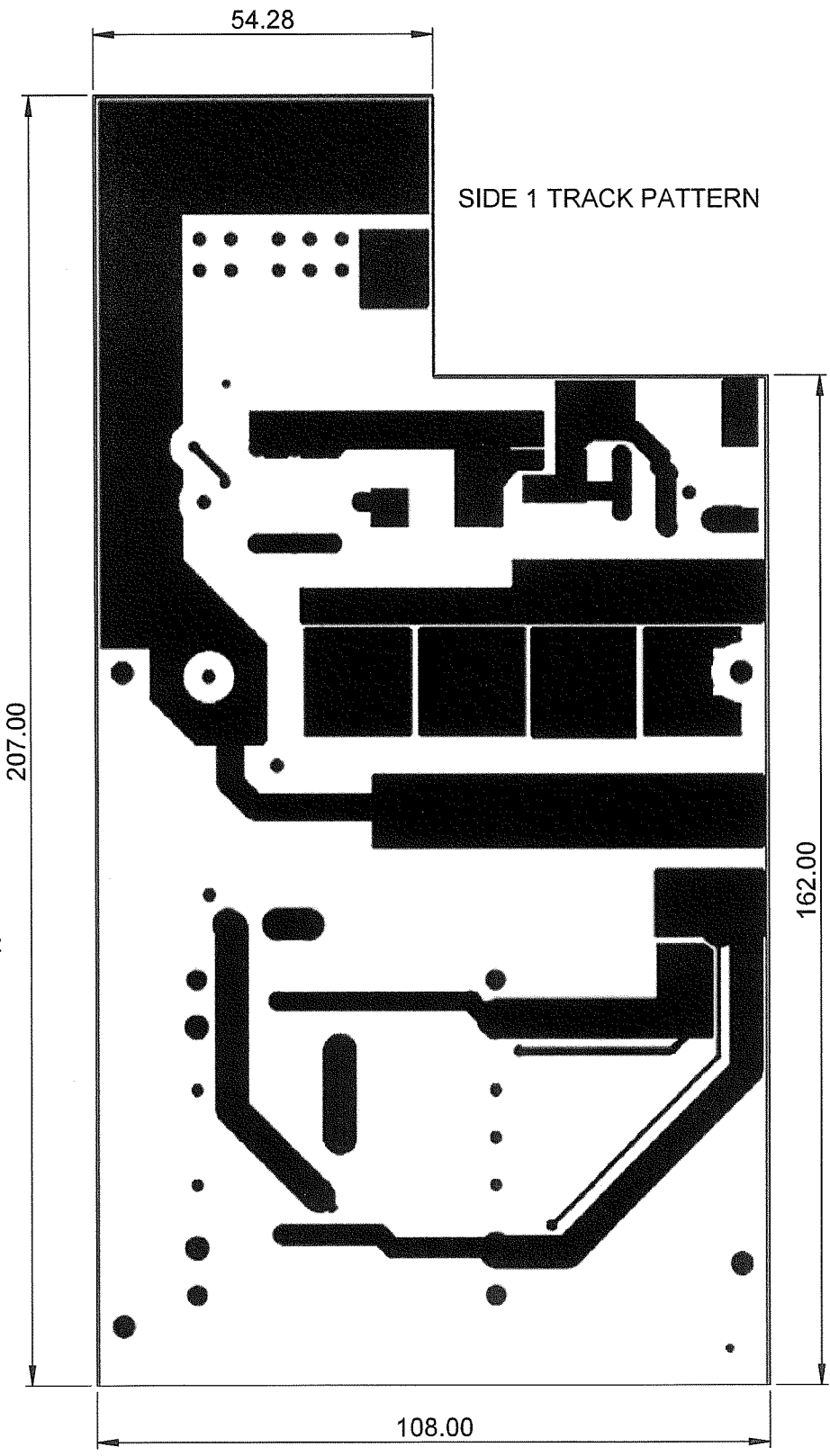
Third Angle Projection 

Do Not Scale

Dimensions in mm

A  
B  
C  
D  
E  
F

A  
B  
C  
D  
E  
F




NOTES

1. PCB MATERIAL - FR4
2. PCB CTI ≥ 175 MEASURED ACCORDING TO IEC12
3. PCB THICKNESS ≥ 1.4mm

Approved on behalf of Sira Certification by D W Holton, 17 Apr 2015

Ex scheduled drawing: DO NOT modify without approval from Sira Certification

Sheet 1 of 1	
Drg. No C16811-622	Iss. 1

1	30.03.15	FIRST ISSUE	Scale 1:1	Copyright Reserved Written Permission To Copy Should Be Obtained	Measurement Technology Ltd, Luton, England 	Title GECMA RT DC PSU, MTL6811 TRACK LAYOUT
Iss	Date	Modification	Tolerance ±			

SolidWorks 1 2 3 4 5 6 7 8 A3

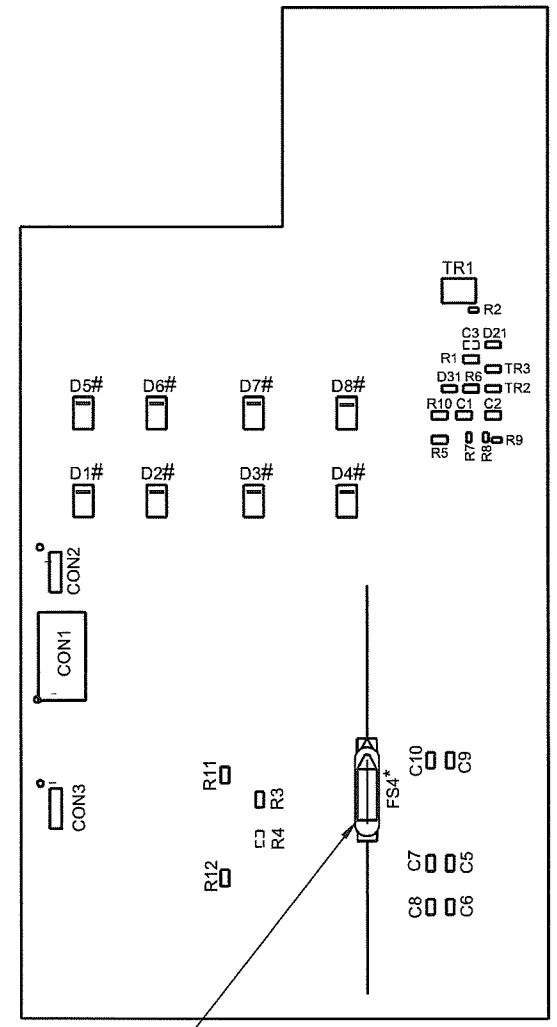
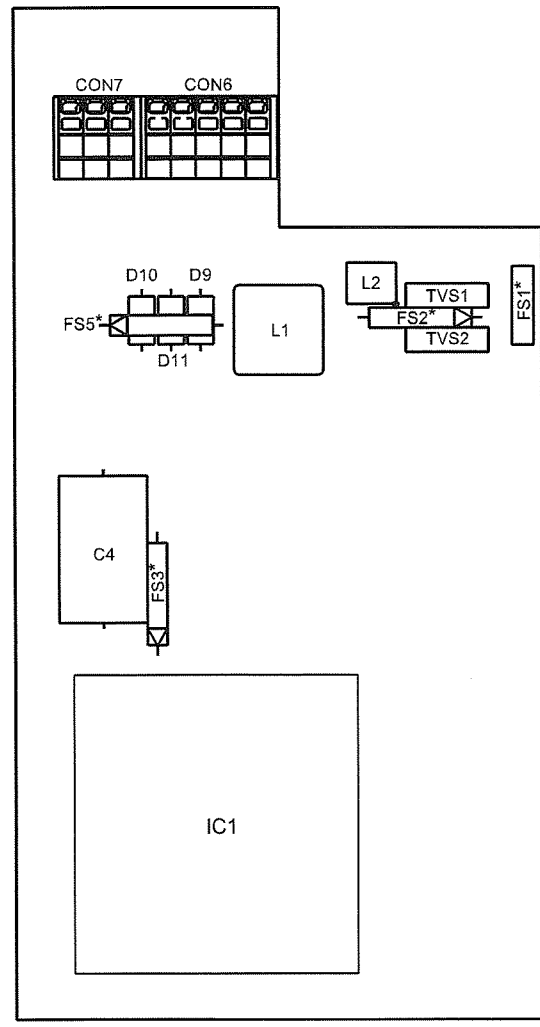
2/



Third Angle Projection

Do Not Scale

Dimensions in mm



NOTES:

1. ORIENTATION OF THE THE FUSE BODIES (FS2, FS3, FS4 & FS5) MUST BE AS SHOWN. THE FUSE BODY MUST NOT BE SUBJECT TO EXCESSIVE TEMPERATURE.  
 FUSE DISTANCES FROM COMPONENTS TO BE AS FOLLOWS :-  
 FS2 TO BE MOUNTED MID HEIGHT OF TVS1 & TVS2 WITH GAP BETWEEN BODIES OF 1 - 2mm  
 FS3 TO BE MOUNTED MID-HEIGHT OF C4 WITH GAP BETWEEN BODIES OF 1 - 2mm.  
 FS5 TO BE MOUNTED ACROSS THE BODIES OF D9, D10 & D11, WITH 1 - 2mm GAP BETWEEN FUSE AND DIODE BODIES
2. COMPONENTS RATED ACCORDING TO IEC60079-1, SECTION 7.1 SHOWN THUS :- #

BODY OF FS4 TO BE SEATED INTO OBROUND CUTOUT IN PCB


Approved on behalf of Sira Certification by D W Holton, 17 Apr 2015

Ex scheduled drawing: DO NOT modify without approval from Sira Certification

1	4.15	Scale 1:1	Copyright Reserved Written Permission To Copy Should Be Obtained	Measurement Technology Ltd, Luton, England	Title GECMA DC PSU, MTL6811 COMP LAYOUT	Sheet 1 of 1	
Iss	Date	Tolerance ±				Drg No CI6811-623	Iss. 1

SolidWorks 1 2 3 4 5 6 7 8 A2

24VDC Active Voltage Barrier Board (20-500480) BOM

 A member of The MTL Instruments Group	Project Name:	Pathfinder
	Project Number:	A0826
	Description:	24VDC Active Voltage Barrier Board
	BOM Number:	20-500480
	Revision:	2
Date:	20/02/2014	

PLEASE NOTE: Any changes to the BOM revision will also require to update and up-rev following documents. Revision number of this BOM is called out in the label drawings as Hardware revision.

Notes:  
 1) Specified parts are primary sources. No substitution without consulting Azonix.  
 2) Mark on the solder side of the board ASSY Part Number (20-500480) and Revision of the BOM (mentioned above) using a permanent marker or an approved label.  
 3) RoHS assembly process is required.  
 4) If changes are made to critical components identified in this document, the corresponding changes need to be made in 19-102xxx after approval from certification agencies.

Reference Documents:

Item #	Quantity	Reference	Description	Azonix Part Number	MFR Part Number	Mfg
1	1	FAB Drawings	FAB Drawings	11-500480		Azonix
2	0	ASSY Drawing	ASSY Drawing	12-500480		Azonix
3	0	Schematics	Schematics	10-500480		Azonix
4	0	Critical Component List	Critical Component List	19-100xxx		Azonix
5	0	Restriction Drawing	Restriction Drawing	14-100210		Azonix

Components:

Item #	Quantity	Reference Designator	Description	Azonix Part Number	MFR Part Number	Manufacturer	PCB FootPrint
1	4	C57A, C57B, C57C, C57D	Capacitor Ceramic, 2220 10uF 50V 10% X7R	22-100471	C5750X7R1H106K230KB	TDK	SMD-2220
2	12	C58A, C58B, C58C, C58D, C59A, C59B, C59C, C59D, C60A, C60B, C60C, C60D	Capacitor Ceramic, 1210 4r7uF 50V 10% X7R	22-100476	C1210C475K5RACTU	Kemet	SMD-1210
3	12	D20A, D20B, D20C, D20D, D23A, D23B, D23C, D23D, D26A, D26B, D26C, D26D	Diode, Transient Voltage Suppressor, 24r0V 1r5kW	23-100387	1.5KE24A-T	Diodes Inc.	DO-201
4	12	D22A, D22B, D22C, D22D, D25A, D25B, D25C, D25D, D28A, D28B, D28C, D28D	Diode, Transient Voltage Suppressor, 6r8V 1r5kW	23-100389	1.5KE6V8A-T	Diodes Inc.	DO-201
5	12	D21A, D21B, D21C, D21D, D24A, D24B, D24C, D24D, D27A, D27B, D27C, D27D	Diode, Schottky, Single Cathode Dual Anode, 10A, 45V 0r47Vd	23-100388	SBR10U45SP5-1E	Diodes Inc.	SMD POWERDI5
6	4	F2A, F2B, F2C, F2D	Fuse, 1r6A 250V Fast-Acting Fuse	35-100528	021601.6MXEP	Littelfuse	TH
7	1	J1P1	Connector, Header 2x6 Vertical, 0.1" Pitch	29-101380	TSW-106-23-F-D	Samtec	TH
8	2	J1P2, J1P3	Connector, Header 1x4 Vertical, 0.1" Pitch	29-101381	TSW-104-23-F-S	Samtec	TH
9	12	Q14A, Q14B, Q14C, Q14D, Q15A, Q15B, Q15C, Q15D, Q16A, Q16B, Q16C, Q16D	SCR 400VDC 55Amp	23-100393	S4055R	Littelfuse	TO-220-3
10	4	R11A, R11B, R11C, R11D	Resistor, 2010 301K-Ohm 1%	21-030644	ERJ-12SF3013U	Panasonic	SMD-2010
11	16	R56A, R56B, R56C, R56D, R57A, R57B, R57C, R57D, R58A, R58B, R58C, R58C, R59A, R59B, R59C, R59D	Resistor, Axial 0r25-Ohm 1% 5W	21-030645	UB5C-0R25F1	Reidson	Axial
12	12	R55A, R55B, R55C, R55D, R60A, R60B, R60C, R60D, R61A, R61B, R61C, R61D	Resistor, 2615 8r06-Ohm 1% 1W	21-030643	SM2615FT8R06		SMD-2615

Key Notes:

Do Not Install (DNI) or layout features/non-parts
Change from previous version
Note that drawing has been provided
SIRA Critical Component

DNI Components:

Item #	Quantity	Reference Designator	Description	Azonix P/N	MFG P/N	Manufacturer	FootPrint

Eaton Electric Limited

Approved on behalf of Sira Certification by D W Holton, 27 August 2014

Ex scheduled drawing: DO NOT modify without approval from Sira Certification



Powering Business Worldwide™

Eaton Electric Ltd,  
Great Marlings, Butterfield, Luton, Bedfordshire, England, LU2 8DL  
Telephone: +44 (0)1582 723633 | Web: [www.mtl-inst.com](http://www.mtl-inst.com) | Email: [mtlenquiry@eaton.com](mailto:mtlenquiry@eaton.com)

This drawing and any information or descriptive material set out on it are the confidential and copyright property of Eaton Electric Ltd. and MUST NOT BE DISCLOSED, COPIED, LOANED in whole or part or used for any purpose without the written permission of Eaton Electric Ltd.

Component designation	Rating	Description
D1#, D2#, D3#, D4#, D5#, D6#, D7#, D8#	-	200V 10A Schottky diode, package size POWERDI™ or larger
FS1*	-	6.3A, 1500A @ 305VAC, 4.5 x 16mm time lag fuse, ≥8mm terminal spacing, ≤6 s blow time at 10A, e.g. Siba 160016 series
CON1	-	2X6 SMT 2.54mm pitch DIL socket
CON2, CON3	-	1X4 SMT 2.54mm pitch DIL socket
IC1	-	DC/DC PSU, MTM Power PMD150 24S24 UHB or Cincon CHB150W 24S24
FS2*, FS3*, FS4*, FS5*	-	110°C 250 V 10A thermal fuse, e.g. Dong Yang DF110S
Thermal fuse x 2 located in cable (fitted between TP1 & TP2)	-	110°C 250 V 10A thermal fuse, e.g. Dong Yang DF110S
CON7	-	3-way Ex e ≥32V spacing spring clamp terminal, ≥10A, -40°C to +110°C, Phoenix ZFKDS series
CON6	-	5-way Ex e ≥32V spacing spring clamp terminal, ≥10A, -40°C to +110°C, Phoenix ZFKDS series

NOTES:

D1-8 are safety components that are important to intrinsic safety compliance and should not be substituted without reference to the Approvals Body

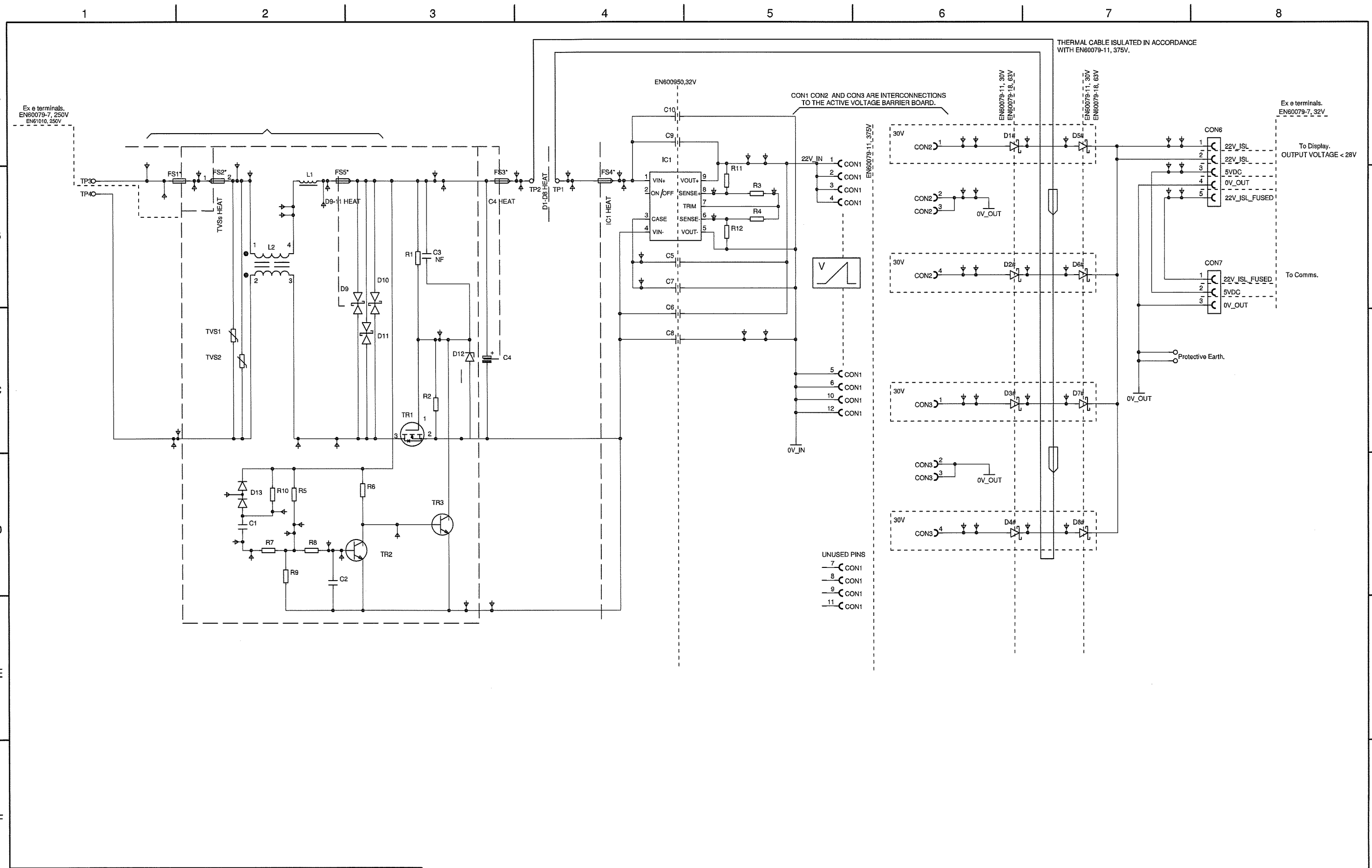
CON6 & CON7 are important to Ex eb compliance

FS1 and all thermal fuses are important to Ex mb compliance

MODIFICATION DETAILS:

ISSUE: 2	DATE: 1-Dec-16	DRAWN: RDC	CHECKED:	CLASS:	NO.:	SHEET: 1/1
TITLE: 6811 PCB Critical Component List			ADDITIONAL INFORMATION:		DRG. NO.: CI6811-621	

24



A. Drawn on behalf of Sira Certification by D W Holton, 17 April 2015

Ex scheduled drawing: DO NOT modify without approval from Sira Certification

				CERTIFYING AUTHORITY :- SIRA			Sht. 1 of 1	
Iss	Date	Drawn	Modification		Copyright Reserved Written Permission To Copy Should Be Obtained			Drg. No
1	3.15	SRC	Scale	Tolerance	Measurement Technology Ltd Luton, England			CI6811-620
			NTS	N/A	Title			
				CIRCUIT DIAGRAM FOR MTL6811				

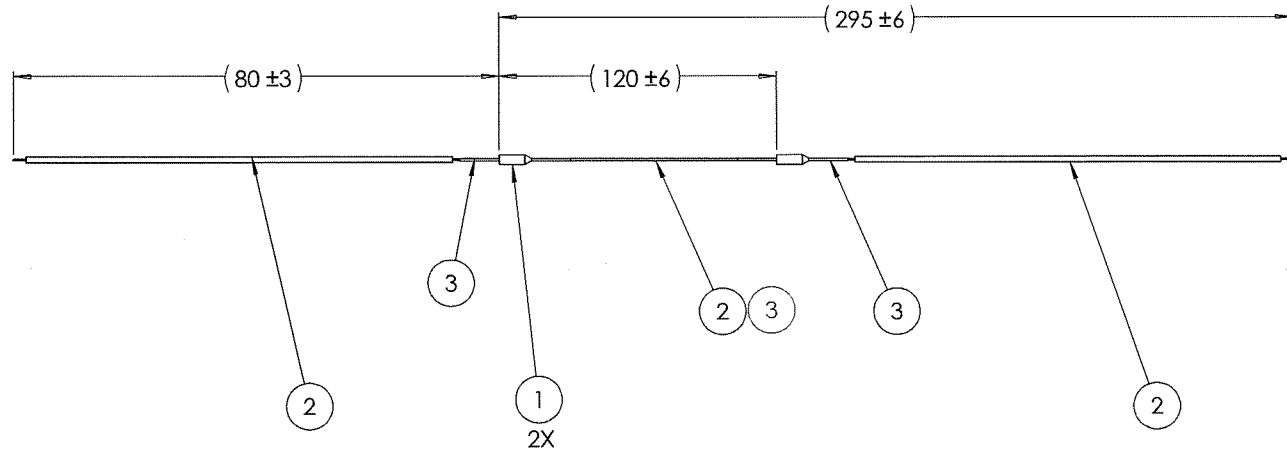
25

1 2 3 4 5 6 7 8

Third Angle Projection 

Do Not Scale

Dimensions in mm




ITEM	QTY	DESCRIPTION
1	2	THERMAL CIRCUIT, AXIAL, 110 C, 10A
2	A/R	WIRE, PVC JACKET, 24 AWG, UL1431, 19/36 STRANDED
3	A/R	SHRINK TUBING, POLYOLEFIN
4	A/R	POLYIMIDE TAPE, MINIMUM THICKNESS 0.1MM

NOTES:

1. ALL WIRES & SHRINK TUBING TO HAVE AN INSULATION THICKNESS OF 0.5mm MINIMUM.
2. NON-CRITICAL DIMENSIONS ARE PROVIDED FOR INFORMATION ONLY AND ARE DENOTED BY (). THESE DIMENSIONS ARE SUBJECT TO CHANGE WITHOUT THE NEED TO NOTIFY THE APPROVAL BODY AS LONG AS THEY DON'T AFFECT THE CRITICAL MINIMUM DIMENSION REQUIREMENTS.
3. RESISTORS & SOLDERED CONNECTIONS TO BE COVERED BY SHRINK TUBING OF APPROPRIATE DIAMETER.
4. SHRINK TUBING TO BE INSTALLED SO THAT IT COMPLETELY INSULATES THE CONDUCTORS OF ITEMS 1 & 2.
5. THERMAL FUSE BODIES TO BE WRAPPED IN POLYIMIDE TAPE.

Ex scheduled drawing: DO NOT modify without approval from Sira Certification

Approved on behalf of Sira Certification by D W Holton, 13 Octob- - 2014

A.0	13.10.14	Scale 1:5	Copyright Reserved Written Permission To Copy Should Be Obtained	Measurement Technology Ltd, Luton, England 	Title CABLE ASSEMBLY, THERMAL FUSE, PSU ASSY, GECMA PSU	Sheet 1 of 1 Drg No CI6810-626	Iss. A.0
Iss	Date	Modification	Tolerance X ± 0.5 XX ± 0.25				

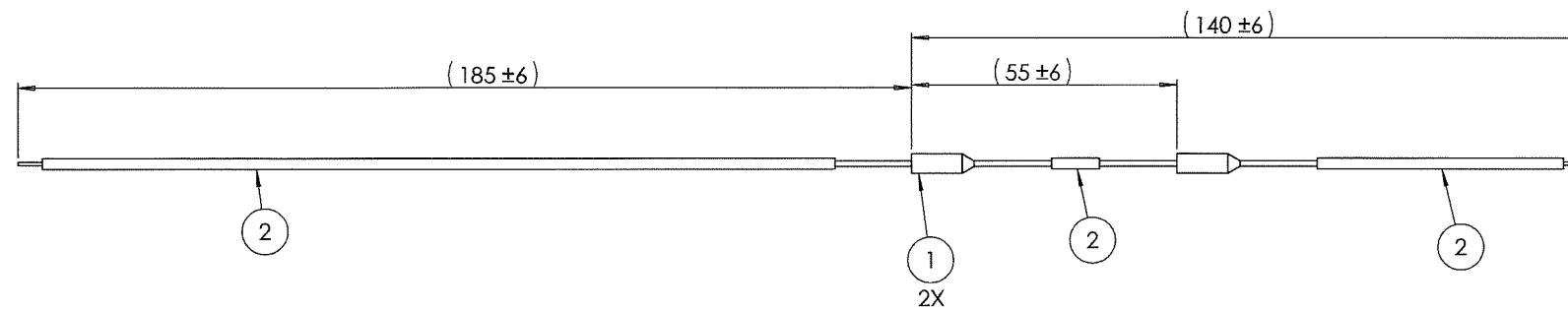
SolidWorks 1 2 3 4 5 6 7 8 A2

26

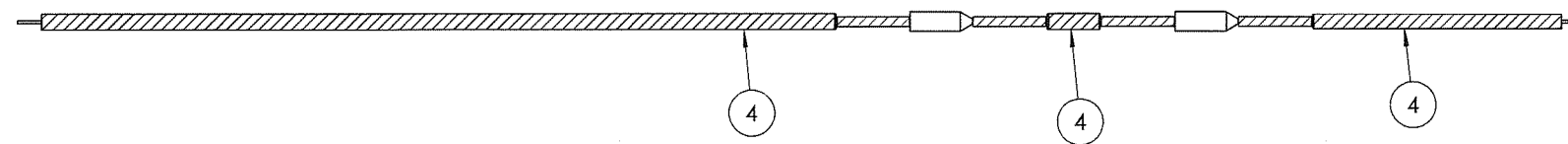
Third Angle Projection

Do Not Scale

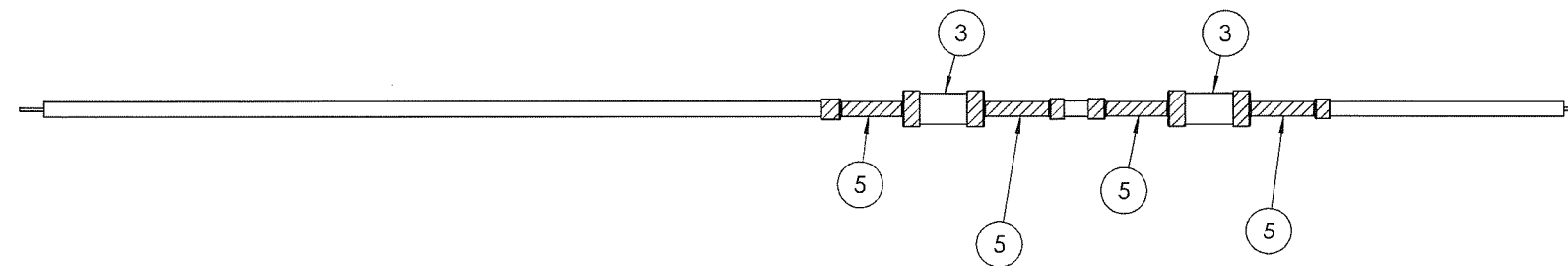
Dimensions in mm



DETAIL A: STRAIGHT ASSEMBLY WITH HOOK-UP WIRE & THERMAL FUSES



DETAIL B: STRAIGHT ASSEMBLY WITH SHRINK TUBING INSTALLED ON HOOK-UP WIRE



DETAIL C: STRAIGHT ASSEMBLY WITH SPACERS & HIGH RATIO SHRINK TUBING INSTALLED

- NOTES:
- ALL WIRES & SHRINK TUBING TO HAVE A FINAL INSULATION THICKNESS GREATER THAN 1mm.
  - NON-CRITICAL DIMENSIONS ARE PROVIDED FOR INFORMATION ONLY AND ARE DENOTED BY (). THESE DIMENSIONS ARE SUBJECT TO CHANGE WITHOUT THE NEED TO NOTIFY THE APPROVAL BODY AS LONG AS THEY DON'T AFFECT THE CRITICAL MINIMUM DIMENSION REQUIREMENTS.
  - RESISTORS & SOLDERED CONNECTIONS TO BE COVERED BY SHRINK TUBING OF APPROPRIATE DIAMETER.

ITEM	QTY	DESCRIPTION
1	2	THERMAL CIRCUIT, AXIAL, 110 C, 10A
2	A/R	WIRE, PVC JACKET, 24 AWG, UL1431, 19/36 STRANDED
3	2	SPACER, UNTHREADED, 0.166" ID, 0.25" OD, NYLON
4	A/R	SHRINK TUBING, POLYOLEFIN
5	A/R	SHRINK TUBING, POLYOLEFIN

A.0	13.10.14	Scale 1:1	Copyright Reserved Written Permission To Copy Should Be Obtained	Measurement Technology Ltd, Luton, England	Title CABLE ASSEMBLY, THERMAL FUSE, PSU ASSY 2, GECMA PSU	Sheet 1 of 1 Drg No CI6810-627	Iss. A.0
Iss	Date	Modification	Tolerance X ± 0.5 XX ± 0.25				

SolidWorks 1 2 3 4 5 6 7 8 A2

Approved on behalf of Sira Certification by D W Holton, 13 Octob 2014

Ex scheduled drawing: DO NOT modify without approval from Sira Certification

27

PHOENIX CONTACT GmbH & Co. KG 様の秘密情報とのため添付図面として詳細が記載できない部品があります。それら使用する部品の情報を以下に示します。

#### アイテム 1

製造者：PHOENIX CONTACT GmbH & Co. KG

部品名称：Terminal Block

型名：UT 10 及び UT 10-PE

IECEX 認証番号：IECEX KEM 06. 0027U

参考図面情報：該当する図面を参考図面として添付します。その情報は以下の通りです。

順番号	図面名称	図面番号
参考図 1	UT 10	00309603
参考図 2	UT 10-PE (1)	00309667
参考図 3	UT 10-PE (2)	00309668

#### アイテム 2

製造者：PHOENIX CONTACT GmbH & Co. KG

部品名称：PCB Spring-Cage Terminal block

型名：ZFKDS 2, 5

IECEX 認証番号：IECEX PTB 06. 0096U

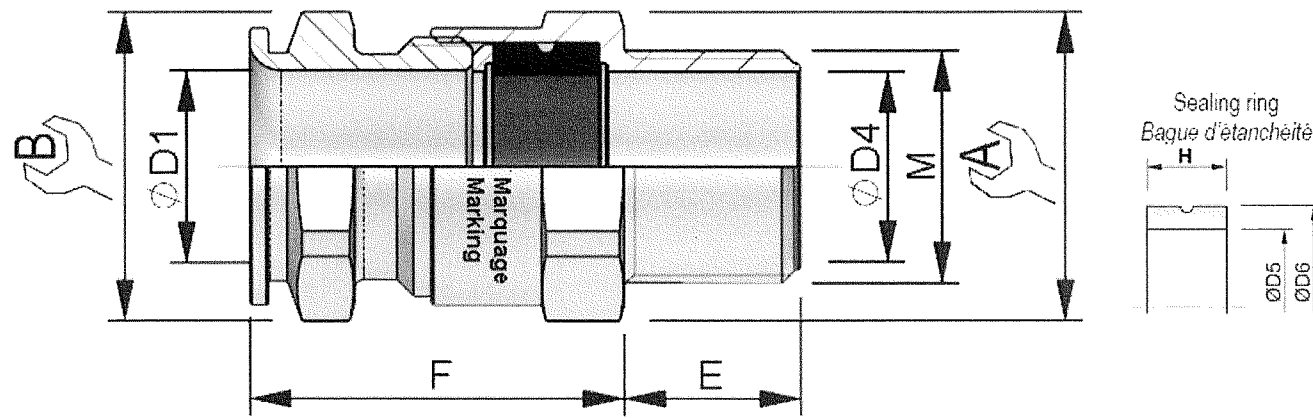
参考図面情報：該当する図面を参考図面として添付します。その情報は以下の通りです。

順番号	図面名称	図面番号
参考図 4	ZFKDS(A) 2,5...-EX	00387707

Title: UT 10 & ZFKDS	No.: TIIS002
クーパー・インダストリーズ・ジャパン株式会社	

Type : ADE

Version : 1F2 ISO



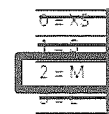
- Neoprene:  
 a) Manufacture: STANDARD GUM  
 b) Type designation: A6120006  
 Colour: Black  
 c) Surface treatments: N/A  
 d) COT: -30 °C to +100 °C  
 e) Resistance to ultraviolet light: N/A

ISO M	E	A min	D4	Ø Externe Cable External Ø	ADE N°	B min	D1	F max	Seal ring D5	Seal ring D6	Seal ring H
10 x 1.5	13	15	5.7	2.75 - 5.5							
12 x 1.5	15	15	5.7	2.75 - 5.5							
16 x 1.5	15	19	5.7	2.75 - 5.5							
20 x 1.5	15	24	5.7	2.75 - 5.5							
25 x 1.5	15	24	5.7	2.75 - 5.5							
32 x 1.5	15	17	8.2	4.5 - 8							
16 x 1.5	15	19	8.7	4.5 - 8.5	4	17	8.7	25	8.5	12.2	6
20 x 1.5	15	24	8.7	4.5 - 8.5							
16 x 1.5	15	19	12.2	7 - 12							
20 x 1.5	15	24	12.2	7 - 12	5	19	12.2	27.5	12	16.2	7.4
25 x 1.5	15	30	12.2	7 - 12							
20 x 1.5	15	24	16.2	10 - 16							
25 x 1.5	15	30	16.2	10 - 16	6	24	16.2	32	16	21.2	9
25 x 1.5	15	30	20.7	13.5 - 20.5							
32 x 1.5	15	36	21.2	13.5 - 21	7	30	21.2	36.5	21	27.2	10.8
32 x 1.5	15	41	27.7	18 - 27.5							
40 x 1.5	15	48	27.7	18 - 27.5	8	41	27.7	46	27.5	35.5	13.8
40 x 1.5	15	48	34.2	23 - 34							
50 x 1.5	16	55	34.2	23 - 34							
50 x 1.5	16	55	41.2	29 - 41							
63 x 1.5	17	67	41.2	29 - 41	10	55	41.2	52	41	50.5	16.8
50 x 1.5	16	64	45.2	35 - 45							
63 x 1.5	17	67	48.2	35 - 48	11	64	48.2	56.5	48	58.5	18
63 x 1.5	17	72	56.2	42 - 56	12	72	56.2	69	56	66.5	19.2
75 x 1.5	18	85	65.2	50 - 65	13	85	65.2	67.5	65	78	21.6
90 x 2	22	95	74.2	58 - 74	14	95	74.2	69	74	88	24
90 x 2	22	110	83.2	66 - 83	15	110	83.2	80	83	97	24
110 x 2	22	120	93.2	75 - 93	16	120	93.2	80	93	107	25.2
110 x 2	22	135	104.2	85 - 104	17	135	104.2	90	104	122	26.4

供試品

Toute cotes en mm / All dimensions mm

Series	Thread size	Cable sealing range	Material	Sealing type	Country
ADE1	M25	3	NP	N	CN



Variant codes	
N	Neoprene
S	Stainless
NP	Nickel plated brass
SS	Stainless steel 316L
SL	Stainless steel 304

ISO	Thread size		Cable sealing range	Gland size	Cable Outer sheath (mm), NPT in the bracket	Hexagon dimension (mm)		Gland length L (mm)	Fiber sealing washer		Nickel-plated brass locknut		
	Code	NPT				Code	ISO		NPT	ISO	NPT		
16*	CAP806594V1L	3/8"	CAP806594V1L	2	4	4.5 - 8.5	17	19	25.0	CAP221645	CAP239038	CAP221694	CAP280114
16	CAP806504V1L	3/8"	CAP806504V1L	3	5	7.0 - 12.0	19	19	27.5				
20	CAP806674V1L	1/2"	CAP806674V1L	1	4	4.5 - 8.5	17	24	25.0				
20	CAP806694V1L	1/2"	CAP806694V1L	2	5	7.0 - 12.0	19	24	27.5	CAP222045	CAP239012	CAP222084	CAP280124
20	CAP806604V1L	1/2"	CAP806604V1L	3	6	10.0 - 16.0 (15.5)	24	24	32.0				
25	CAP806774V1L	3/4"	CAP806774V1L	1	5	7.0 - 12.0	19	30	27.5				
25	CAP806794V1L	3/4"	CAP806794V1L	2	6	10.0 - 16.0	24	30	32.0	CAP222545	CAP239034	CAP222594	CAP280134
25	CAP806704V1L	3/4"	CAP806704V1L	3	7	13.5 - 20.5	30	30	36.5				
32	CAP806894V1L	-	-	2	7	13.5 - 20.5	30	36	36.5	CAP223245	CAP239010	CAP223294	CAP280144
32	CAP806804V1L	1"	CAP806804V1L	3	8	18.0 - 27.5 (26.0)	41	41	46.0				
40	CAP806994V1L	-	-	2	8	18.0 - 27.5 (26.0)	41	44	46.0	CAP224045	CAP239114	CAP224094	CAP280154
40	CAP806904V1L	1-1/4"	CAP806904V1L	3	9	23.0 - 34.0	48	48	50.0				
50	CAP807094V1L	-	-	0	9	23.0 - 34.0	48	55	50.0				
50	CAP807004V1L	1-1/2"	CAP807004V1L	1	10	29.0 - 41.0	55	55	52.0	CAP225045	CAP239112	CAP225094	CAP280164
50	CAP807084V1L	-	-	2	11	35.0 - 45.0 (48.0)	64	64	56.5				
63	CAP807294V1L	2"	CAP807294V1L	2	11	35.0 - 45.0 (48.0)	64	67	57.5	CAP226345	CAP239020	CAP226394	CAP280174
63	CAP807204V1L	2"	CAP807204V1L	3	12	42.0 - 56.0 (63.0)	72	72	60.0				

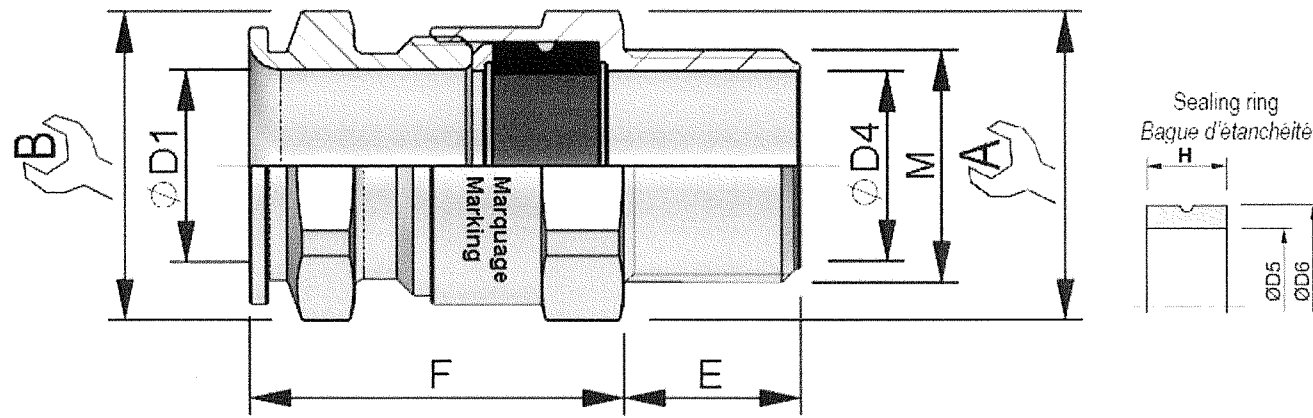
Eaton Electric Limited

プロジェクト名:	クーパ・インダストリー・ジャパン 株式会社	名称	ADE1F2-M16		
ユーザー名:		サイズ	FSCM NO	図面番号	改訂
JOB NAME:	発行日: 2017/10/18			1F2 ISO M16	
Ref no.:	承認 T.I 作成者 IS	縮尺	N/A	シート	1 / 1



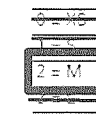
Type : ADE

Version : 1F2 ISO



Neoprene:  
 a) Manufacture: STANDARD GUM  
 b) Type designation: A6120006  
 Colour: Black  
 c) Surface treatments: N/A  
 d) COT: -30 °C to +100 °C  
 e) Resistance to ultraviolet light: N/A

Series	Thread size	Cable sealing range	Material	Sealing type	Country
ADE1	M25	3	NP	N	CN



N	Neoprene
S	Silicone
NP	Nickel plated brass
SS	Stainless steel 316L
SL	Stainless steel 304

ISO M	E	A min	D4	Ø Externe Cable External Ø	ADE N°	B min	D1	F max	Seal ring D5	Seal ring D6	Seal ring H
10 x 1.5	13	15	5.7	2.75 - 5.5	3	15	5.7	24	5.5	10.2	6
12 x 1.5	15	15	5.7	2.75 - 5.5							
16 x 1.5	15	19	5.7	2.75 - 5.5							
20 x 1.5	15	24	5.7	2.75 - 5.5							
12 x 1.5	15	17	8.2	4.5 - 8	4	17	8.7	25	8.5	12.2	6
16 x 1.5	15	19	8.7	4.5 - 8.5							
20 x 1.5	15	24	8.7	4.5 - 8.5	5	19	12.2	27.5	12	16.2	7.4
16 x 1.5	15	19	12.2	7 - 12							
20 x 1.5	15	24	12.2	7 - 12							
25 x 1.5	15	30	12.2	7 - 12	6	24	16.2	32	16	21.2	9
20 x 1.5	15	24	16.2	10 - 16							
25 x 1.5	15	30	20.7	13.5 - 20.5	7	30	21.2	36.5	21	27.2	10.8
32 x 1.5	15	36	21.2	13.5 - 21							
32 x 1.5	15	41	27.7	18 - 27.5	8	41	27.7	46	27.5	35.5	13.8
40 x 1.5	15	48	27.7	18 - 27.5							
40 x 1.5	15	48	34.2	23 - 34	9	48	34.2	50	34	43.5	15.6
50 x 1.5	16	55	34.2	23 - 34							
50 x 1.5	16	55	41.2	29 - 41	10	55	41.2	52	41	50.5	16.8
63 x 1.5	17	67	41.2	29 - 41							
50 x 1.5	16	64	45.2	35 - 45	11	64	48.2	56.5	48	58.5	18
63 x 1.5	17	67	48.2	35 - 48							
63 x 1.5	17	72	56.2	42 - 56	12	72	56.2	60	56	66.5	19.2
75 x 1.5	18	85	56.2	50 - 65							
90 x 2	22	95	74.2	58 - 74	14	95	74.2	69	74	88	24
90 x 2	22	110	83.2	66 - 83							
110 x 2	22	120	93.2	75 - 93	16	120	93.2	80	93	107	25.2
110 x 2	22	135	104.2	85 - 104							
110 x 2	22	135	104.2	85 - 104	17	135	104.2	90	104	122	26.1
110 x 2	22	135	104.2	85 - 104							

供試品






Toute cotes en mm / All dimensions mm

ISO	Thread size		Cable sealing range	Gland size	Cable Outer sheath (mm), NPT in the bracket	Hexagon dimension (mm)		Gland length L (mm)	Fiber sealing washer		Nickel-plated brass locknut		
	Code	NPT				Code	A		B	ISO	NPT	ISO	NPT
16*	CAP806594V1L	3/8"	CAP806594V1L	2	4	4.5 - 8.5	17	19	25.0	CAP221645	CAP239008	CAP221684	CAP280114
16*	CAP806504V1L	3/8"	CAP806504V1L	3	5	7.0 - 12.0	19	19	27.5				
20	CAP806674V1L	1/2"	CAP806674V1L	1	4	4.5 - 8.5	17	24	25.0				
20	CAP806694V1L	1/2"	CAP806694V1L	2	5	7.0 - 12.0	19	24	27.5	CAP222045	CAP239012	CAP222094	CAP280124
20	CAP806604V1L	1/2"	CAP806604V1L	3	6	10.0 - 16.0 (15.5)	24	24	32.0				
25	CAP806774V1L	3/4"	CAP806774V1L	1	5	7.0 - 12.0	19	30	27.5				
25	CAP806794V1L	3/4"	CAP806794V1L	2	6	10.0 - 16.0	24	30	32.0	CAP222545	CAP239034	CAP222594	CAP280134
25	CAP806704V1L	3/4"	CAP806704V1L	3	7	13.5 - 20.5	30	30	36.5				
32	CAP806884V1L	-	-	2	7	13.5 - 20.5	30	36	36.5				
32	CAP806804V1L	1"	CAP806804V1L	3	8	18.0 - 27.5 (26.0)	41	41	46.0	CAP223245	CAP239010	CAP223294	CAP280144
40	CAP806994V1L	-	-	3	8	18.0 - 27.5 (26.0)	41	44	46.0				
40	CAP806904V1L	1-1/4"	CAP806904V1L	3	9	23.0 - 34.0	48	48	50.0	CAP224045	CAP239114	CAP224094	CAP280154
50	CAP807094V1L	-	-	0	9	23.0 - 34.0	48	55	50.0				
50	CAP807004V1L	1-1/2"	CAP807004V1L	1	10	29.0 - 41.0	55	55	52.0	CAP225045	CAP239112	CAP225094	CAP280164
50	CAP807084V1L	-	-	2	11	35.0 - 45.0 (48.0)	64	64	56.5				
63	CAP807294V1L	2"	CAP807294V1L	2	11	35.0 - 45.0 (48.0)	64	67	57.5				
63	CAP807204V1L	2"	CAP807204V1L	3	12	42.0 - 56.0 (53.0)	72	72	60.0	CAP226345	CAP239020	CAP226394	CAP280174

Eaton Electric Limited

プロジェクト名:	クーパー・インダストリー・ジャパン 株式会社	名称	ADE1F2-M25		
ユーザー名:		サイズ	FSCM NO	図面番号	改訂
JOB NAME:	発行日: 2017/10/18	1F2 ISO M25			
Ref no.:	承認 T.I 作成者 I.S	縮尺	N/A	シート	1 / 1

Modification		Modification	
Is	Date	Drn	Scale
1	20.4.15	CMB	1 : 1
2	9.16	PT	Sheet 1 of 1
3	2.19	CMB	Drg. No. CI6811-625
4	12.21	CMB	
Eaton Electric Limited, Great Marings, Butterfield, Luton, Bedfordshire, England, LU2 8DL Telephone: +44 (0)1582 723633 Web: www.mtl-inst.co.uk Email: mtl enquiry@eaton.com		These drawings form the certification documentation and must not be modified without reference to the design authority.	
<b>EATON</b> Powering Business Worldwide		Title GECMA PSU MODULE DC Certification Label Details - SIRA	
This drawing and any information or descriptive material set out on it are the confidential and copyright property of Eaton Electric Limited and MUST NOT BE DISCLOSED, COPIED, LOANED in whole or part or used for any purpose without the written permission of Eaton Electric Limited.		FOR 186	

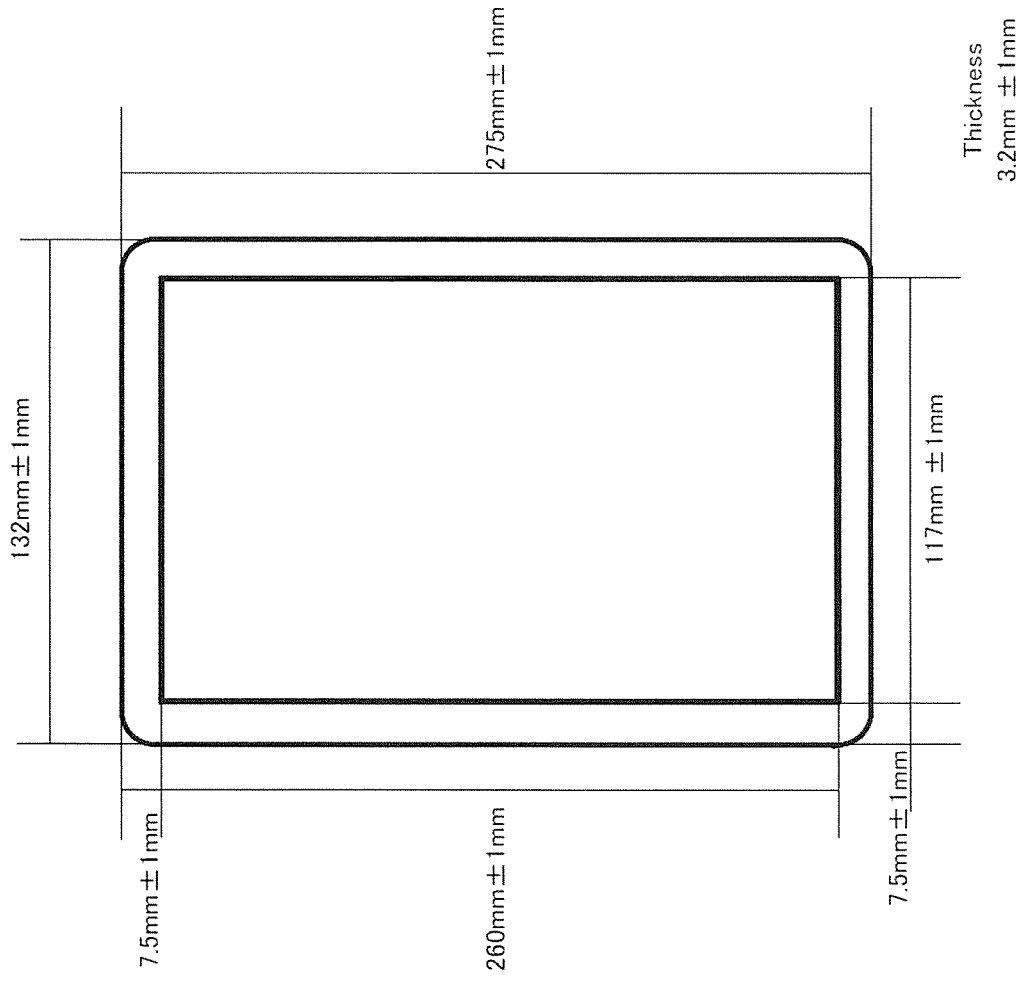
		<b>CROUSE-HINDS</b> SERIES	
Model	MTL Gecma PSU Module DC		
Certification Code	 II 2G Ex eb mb IIC T4 Gb		
Certification No.	SIRA 14ATEX5061X IECEX SIR 14.0030 X		
Serial No.	XXXXXXXXXXXXXXXXXXXX		
Specification	- 30°C < Ta < +60°C 18-36Vdc; 5.5A		
  			
EATON ELECTRIC LTD, Luton, England LU2 8DL www.mtl-inst.com			

SEE NOTE 6

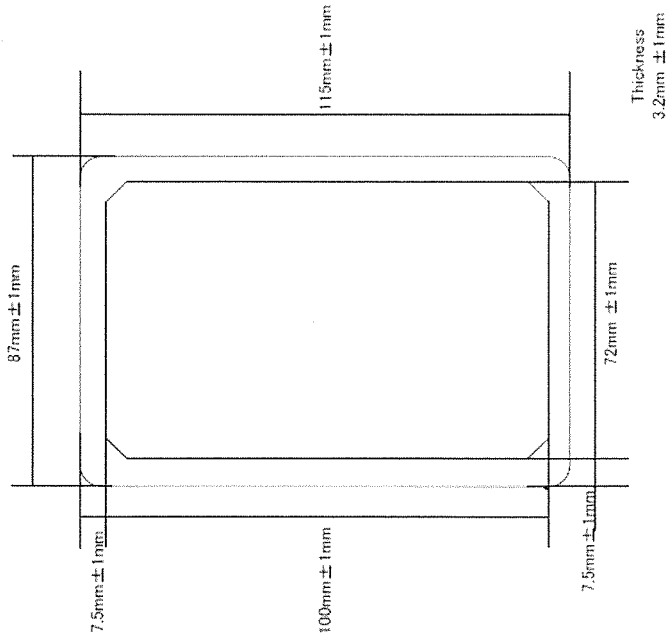
- NOTE:
- THIS LABEL IS PRODUCED BY PRINTING ONTO ADHESIVE-BACKED POLYESTER MATERIAL USING A THERMAL TRANSFER PROCESS. LABEL THICKNESS ≤ 0.2mm
  - ADHESIVE USED IS PERMANENT ACRYLIC ADHESIVE.
  - ALL MATERIALS USED MUST HAVE A CTI ≥ 175V TO IEC60112.
  - THIS LABEL MAY CONTAIN OTHER INFORMATION WHICH IS NOT RATIFIED BY SIRA.
  - SERIAL NUMBER TO INCLUDE YEAR OF MANUFACTURE.
  - 40°C VARIANT POSSIBLE WHEN ASSEMBLED IN ACCORDANCE WITH VARIANT SPECIFIC ASSEMBLY INSTRUCTIONS DETAILED IN CI6811-624.



Gasket Body Cover



Gasket TB Cover



Title: Gasket dimensions

Drawing No. T1IS001

カーパー・インダストリーズ・ジャパン株式会社